

For Research Use Only

# OBFC2B Polyclonal antibody

Catalog Number: 14809-1-AP

Featured Product

3 Publications



## Basic Information

<b>Catalog Number:</b> 14809-1-AP	<b>GenBank Accession Number:</b> BC001079	<b>Purification Method:</b> Antigen affinity purification
<b>Size:</b> 150ul , Concentration: 500 µg/ml by Nanodrop and 300 µg/ml by Bradford method using BSA as the standard;	<b>GeneID (NCBI):</b> 79035	<b>Recommended Dilutions:</b> WB 1:2000-1:12000 IP 0.5-4.0 ug for IP and 1:500-1:1000 for WB
<b>Source:</b> Rabbit	<b>Full Name:</b> oligonucleotide/oligosaccharide-binding fold containing 2B	<b>IHC 1:20-1:200</b> <b>IF 1:10-1:100</b>
<b>Isotype:</b> IgG	<b>Calculated MW:</b> 22 kDa	
<b>Immunogen Catalog Number:</b> AG6532	<b>Observed MW:</b> 30-33 kDa	

## Applications

<b>Tested Applications:</b> IF, IHC, IP, WB, ELISA	<b>Positive Controls:</b> <b>WB :</b> HepG2 cells, NIH/3T3 cells, HeLa cells
<b>Cited Applications:</b> IHC, WB	<b>IP :</b> HeLa cells,
<b>Species Specificity:</b> human, mouse, rat	<b>IHC :</b> human ovary tumor tissue, human pancreas tissue
<b>Cited Species:</b> human	<b>IF :</b> HeLa cells,

**Note-IHC: suggested antigen retrieval with TE buffer pH 9.0; (\*) Alternatively, antigen retrieval may be performed with citrate buffer pH 6.0**

## Background Information

OBFC2B, also named as NABP2 or SSB1, is a 211 amino acid protein, which belongs to the SOSS-B family. OBFC2B localizes to nuclear foci following DNA damage. OBFC2B is a component of the SOSS complex, a multiprotein complex that functions downstream of the MRN complex to promote DNA repair and G2/M checkpoint. In the SOSS complex, OBFC2B acts as a sensor of single-stranded DNA that binds to single-stranded DNA, in particular to polypyrimidines. The calculated molecular weight of OBFC2B is 22 kDa, but modified OBFC2B is about 32 kDa.

## Notable Publications

Author	Pubmed ID	Journal	Application
Anaïs Aulas	30425239	Cell Death Dis	WB
Jeffrey R Skaar	25675981	Cell Res	WB
Bowen Li	37113629	J Inflamm Res	WB,IHC

## Storage

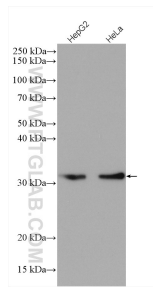
**Storage:**  
Store at -20°C. Stable for one year after shipment.  
**Storage Buffer:**  
PBS with 0.02% sodium azide and 50% glycerol pH 7.3.  
Aliquoting is unnecessary for -20°C storage

\*\*\* 20ul sizes contain 0.1% BSA

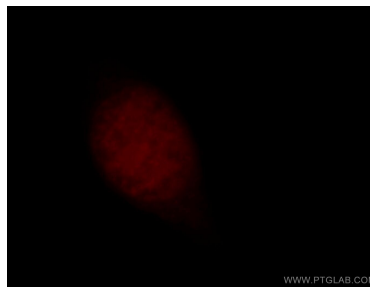
For technical support and original validation data for this product please contact:  
T: 1 (888) 4PTGLAB (1-888-478-4522) (toll free in USA), or 1(312) 455-8498 (outside USA) E: proteintech@ptglab.com W: ptglab.com

This product is exclusively available under Proteintech Group brand and is not available to purchase from any other manufacturer.

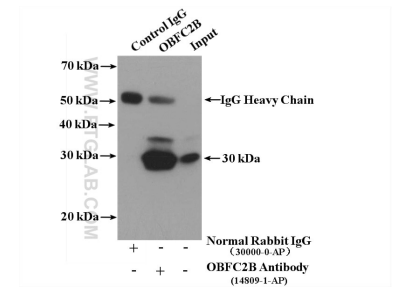
## Selected Validation Data



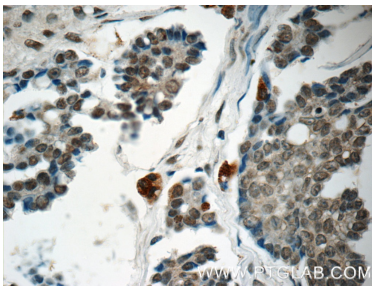
Various lysates were subjected to SDS PAGE followed by western blot with 14809-1-AP (OBFC2B antibody) at dilution of 1:6000 incubated at room temperature for 1.5 hours.



Immunofluorescent analysis of HeLa cells, using OBFC2B antibody 14809-1-AP at 1:25 dilution and Rhodamine-labeled goat anti-rabbit IgG (red).



IP Result of anti-OBFC2B (IP:14809-1-AP, 4ug; Detection:14809-1-AP 1:500) with HeLa cells lysate 3200ug.



Immunohistochemical analysis of paraffin-embedded human ovary tumor tissue slide using 14809-1-AP (OBFC2B Antibody) at dilution of 1:50 (under 40x lens).