

For Research Use Only

GIPC1 Polyclonal antibody

Catalog Number: 14822-1-AP

Featured Product

12 Publications



Basic Information

Catalog Number:

14822-1-AP

Size:

150ul, Concentration: 900 ug/ml by Nanodrop and 413 ug/ml by Bradford method using BSA as the standard;

Source:

Rabbit

Isotype:

IgG

Immunogen Catalog Number:

AG6597

GenBank Accession Number:

BC000410

GeneID (NCBI):

10755

UNIPROT ID:

O14908

Full Name:

GIPC PDZ domain containing family, member 1

Calculated MW:

36 kDa

Observed MW:

42 kDa

Purification Method:

Antigen affinity purification

Recommended Dilutions:

WB 1:600-1:4000

IP 0.5-4.0 ug for 1.0-3.0 mg of total protein lysate

IHC 1:50-1:500

IF/ICC 1:200-1:800

Applications

Tested Applications:

WB, IHC, IF/ICC, IP, ELISA

Cited Applications:

WB, IHC, IF

Species Specificity:

human, mouse, rat

Cited Species:

human, mouse

Positive Controls:

WB : HepG2 cells, mouse skeletal muscle tissue, mouse brain tissue, rat brain tissue

IP : mouse brain tissue,

IHC : human breast cancer tissue,

IF/ICC : HepG2 cells, A2780 cells

Note-IHC: suggested antigen retrieval with TE buffer pH 9.0; (*) Alternatively, antigen retrieval may be performed with citrate buffer pH 6.0

Background Information

GAIP interacting protein C terminus, member 1(GIPC1), also known as PDZ domain-containing protein GIPC1, is a cytoplasmic protein that also localizes to the peripheral membrane, acting as an adaptor protein linking receptor interactions to intracellular signaling pathways, including cell cycle regulation, and expression has been associated with some cancers (PMID: 19175293, 26757732). This antibody is specific to GIPC1 with a band at 42 kDa (PMID: 18721486).

Notable Publications

Author	Pubmed ID	Journal	Application
Yong Liu	34676980	CNS Neurosci Ther	WB
Jianwen Deng	32413282	Am J Hum Genet	IF
Jorge Carretero-Ortega	31050647	Elife	WB

Storage

Storage:

Store at -20°C. Stable for one year after shipment.

Storage Buffer:

PBS with 0.02% sodium azide and 50% glycerol

Aliquoting is unnecessary for -20°C storage

*** 20ul sizes contain 0.1% BSA

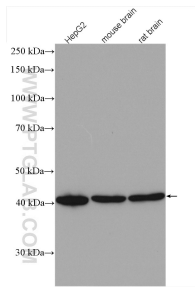
For technical support and original validation data for this product please contact:

T: 1 (888) 4PTGLAB (1-888-478-4522) (toll free in USA), or 1(312) 455-8498 (outside USA)

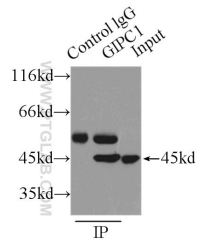
E: proteintech@ptglab.com
W: ptglab.com

This product is exclusively available under Proteintech Group brand and is not available to purchase from any other manufacturer.

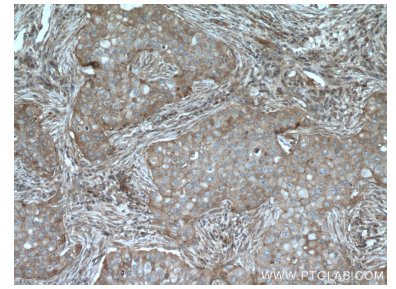
Selected Validation Data



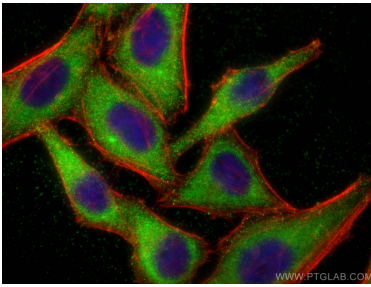
Various lysates were subjected to SDS PAGE followed by western blot with 14822-1-AP (GIPC1 antibody) at dilution of 1:3000 incubated at room temperature for 1.5 hours.



IP result of anti-GIPC1 (IP:14822-1-AP, 4ug; Detection:14822-1-AP 1:500) with mouse brain tissue lysate 9500ug.



Immunohistochemical analysis of paraffin-embedded human breast cancer tissue slide using 14822-1-AP (GIPC1 antibody) at dilution of 1:200 (under 10x lens. Heat mediated antigen retrieval with Tris-EDTA buffer (pH 9.0).



Immunofluorescent analysis of (-20°C Ethanol) fixed HepG2 cells using GIPC1 antibody (14822-1-AP) at dilution of 1:400 and CoraLite®488-Conjugated AffiniPure Goat Anti-Rabbit IgG(H+L) (SA00013-2), CL594-phalloidin (red).