

For Research Use Only

RPS24 Polyclonal antibody

Catalog Number: 14831-1-AP **3 Publications**



Basic Information

Catalog Number: 14831-1-AP	GenBank Accession Number: BC000523	Purification Method: Antigen affinity purification
Size: 150ul , Concentration: 180 µg/ml by Nanodrop and 180 µg/ml by Bradford method using BSA as the standard;	GeneID (NCBI): 6229	Recommended Dilutions: WB 1:200-1:1000 IF 1:20-1:200
Source: Rabbit	UNIPROT ID: P62847	
Isotype: IgG	Full Name: ribosomal protein S24	
Immunogen Catalog Number: AG6621	Calculated MW: 15 kDa	
	Observed MW: 18 kDa	

Applications

Tested Applications: IF, WB, ELISA	Positive Controls: WB : SH-SY5Y cells, HEK-293 cells, HL-60 cells IF : SH-SY5Y cells,
Cited Applications: WB,IHC	
Species Specificity: human, mouse, rat	
Cited Species: human, mouse	

Background Information

40S ribosomal protein S24 (RPS24) is a 133 amino acid protein, which belongs to the ribosomal protein S24e family. RPS24 is required for processing of pre-rRNA and maturation of 40S ribosomal subunits. RPS24 has an association with Diamond-Blackfan anemia 3.

Notable Publications

Author	Pubmed ID	Journal	Application
Haiyuan Li	36614249	Int J Mol Sci	IHC
Guodong Cai	35395601	Ecotoxicol Environ Saf	WB
Jiawei Zhao	36803603	Cell	WB

Storage

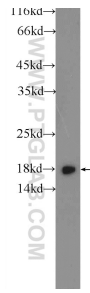
Storage:
Store at -20°C. Stable for one year after shipment.
Storage Buffer:
PBS with 0.02% sodium azide and 50% glycerol pH 7.3.
Aliquoting is unnecessary for -20°C storage

*** 20ul sizes contain 0.1% BSA

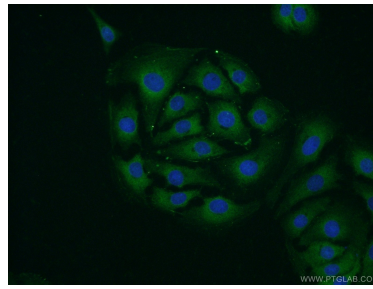
For technical support and original validation data for this product please contact:
T: 1 (888) 4PTGLAB (1-888-478-4522) (toll free in USA), or 1(312) 455-8498 (outside USA) E: proteintech@ptglab.com W: ptglab.com

This product is exclusively available under Proteintech Group brand and is not available to purchase from any other manufacturer.

Selected Validation Data



SH-SY5Y cells were subjected to SDS PAGE followed by western blot with 14831-1-AP (RPS24 Antibody) at dilution of 1:300 incubated at room temperature for 1.5 hours.



Immunofluorescent analysis of SH-SY5Y cells using 14831-1-AP (RPS24 antibody) at dilution of 1:50 and Alexa Fluor 488-conjugated AffiniPure Goat Anti-Rabbit IgG(H+L).