

For Research Use Only

# GEFT-Specific Polyclonal antibody

Catalog Number: 14839-1-AP

14 Publications



## Basic Information

<b>Catalog Number:</b> 14839-1-AP	<b>GenBank Accession Number:</b> NM_182947	<b>Purification Method:</b> Antigen affinity purification
<b>Size:</b> 150ul , Concentration: 750 µg/ml by Nanodrop and 500 µg/ml by Bradford method using BSA as the standard;	<b>GeneID (NCBI):</b> 115557	<b>Recommended Dilutions:</b> WB 1:500-1:3000 IP 0.5-4.0 ug for IP and 1:500-1:3000 for WB
<b>Source:</b> Rabbit	<b>Full Name:</b> RhoA/RAC/CDC42 exchange factor	<b>IHC 1:20-1:200</b>
<b>Isotype:</b> IgG	<b>Calculated MW:</b> 64 kDa	
	<b>Observed MW:</b> 64 kDa	

## Applications

### Tested Applications:

IHC, IP, WB, ELISA

### Cited Applications:

IF, IHC, WB

### Species Specificity:

human, mouse, rat

### Cited Species:

human, rat, mouse

**Note-IHC: suggested antigen retrieval with TE buffer pH 9.0; (\*) Alternatively, antigen retrieval may be performed with citrate buffer pH 6.0**

### Positive Controls:

WB : mouse skeletal muscle tissue, HEK-293 cells, mouse heart tissue, mouse liver tissue

IP : mouse brain tissue,

IHC : human pancreas tissue, human skeletal muscle tissue

## Background Information

GEFT, also named as p63RhoGEF, may play a role in actin cytoskeleton reorganization in different tissues since its activation induces formation of actin stress fibers. It works as a guanine nucleotide exchange factor for Rho family of small GTPases. GETF links specifically G alpha q/11-coupled receptors to RHOA activation. GEFT may be an important regulator of processes involved in axon and dendrite formation. In neurons seems to be an exchange factor primarily for RAC1. It is involved in skeletal myogenesis. GEFT is expressed as three isoforms (64, 53 and 68 kDa).

## Notable Publications

Author	Pubmed ID	Journal	Application
Anita Ongherth	26392029	J Mol Cell Cardiol	WB, IF
Ping Han	36123685	Cell Commun Signal	IF, WB
Mykhaylo V Artamonov	30377223	Sci Signal	WB

## Storage

### Storage:

Store at -20°C. Stable for one year after shipment.

### Storage Buffer:

PBS with 0.02% sodium azide and 50% glycerol pH 7.3.

Aliquoting is unnecessary for -20°C storage

\*\*\* 20ul sizes contain 0.1% BSA

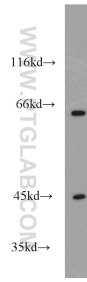
For technical support and original validation data for this product please contact:

T: 1 (888) 4PTGLAB (1-888-478-4522) (toll free in USA), or 1(312) 455-8498 (outside USA)

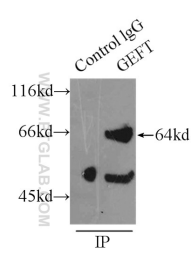
E: proteintech@ptglab.com  
W: ptglab.com

This product is exclusively available under Proteintech Group brand and is not available to purchase from any other manufacturer.

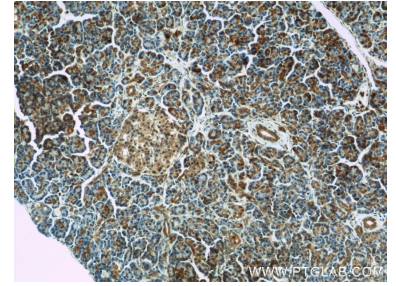
## Selected Validation Data



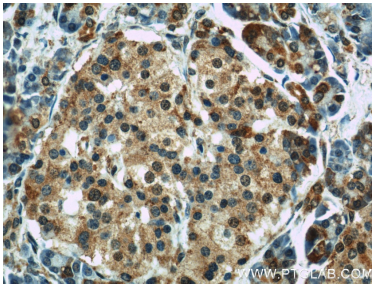
mouse skeletal muscle tissue were subjected to SDS PAGE followed by western blot with 14839-1-AP (GEFT-Specific antibody) at dilution of 1:1500 incubated at room temperature for 1.5 hours.



IP Result of anti-GEFT-Specific (IP:14839-1-AP, 4ug; Detection:14839-1-AP 1:1500) with mouse brain tissue lysate 8000ug.



Immunohistochemical analysis of paraffin-embedded human pancreas slide using 14839-1-AP (GEFT-Specific Antibody) at dilution of 1:100.



Immunohistochemical analysis of paraffin-embedded human pancreas slide using 14839-1-AP (GEFT-Specific Antibody) at dilution of 1:100.