

For Research Use Only

# SLC25A6-Specific Polyclonal antibody



Catalog Number: 14841-1-AP

Featured Product

5 Publications

## Basic Information

**Catalog Number:**  
14841-1-AP

**Size:**  
150ul, Concentration: 450 µg/ml by Nanodrop and 273 µg/ml by Bradford method using BSA as the standard;

**Source:**  
Rabbit

**Isotype:**  
IgG

**GenBank Accession Number:**  
NM\_001636

**GeneID (NCBI):**  
293

**Full Name:**  
solute carrier family 25 (mitochondrial carrier; adenine nucleotide translocator), member 6

**Calculated MW:**  
33 kDa

**Observed MW:**  
30-33 kDa

**Purification Method:**  
Antigen affinity purification

**Recommended Dilutions:**  
WB 1:500-1:2000  
IP 0.5-4.0 ug for IP and 1:500-1:1000 for WB  
IHC 1:20-1:200  
IF 1:10-1:100

## Applications

**Tested Applications:**  
IF, IHC, IP, WB, ELISA

**Cited Applications:**  
CoIP, IF, IHC, WB

**Species Specificity:**  
human, mouse

**Cited Species:**  
human

**Note-IHC: suggested antigen retrieval with TE buffer pH 9.0; (\*) Alternatively, antigen retrieval may be performed with citrate buffer pH 6.0**

**Positive Controls:**

**WB:** L02 cells, HEK-293 cells, human liver tissue, human heart tissue, human placenta tissue, HEK-293T cells

**IP:** mouse liver tissue,

**IHC:** human skeletal muscle tissue, human heart tissue, human kidney tissue, human liver tissue

**IF:** HepG2 cells, MCF-7 cells

## Background Information

### Notable Publications

Author	Pubmed ID	Journal	Application
Ridhima Gomkale	32142709	Curr Biol	WB
Yi Hao	33602229	Cancer Cell Int	WB,IF
Sylvie Callegari	27718247	FEBS Lett	WB

## Storage

**Storage:**

Store at -20°C. Stable for one year after shipment.

**Storage Buffer:**

PBS with 0.02% sodium azide and 50% glycerol pH 7.3.

Aliquoting is unnecessary for -20°C storage

\*\*\* 20ul sizes contain 0.1% BSA

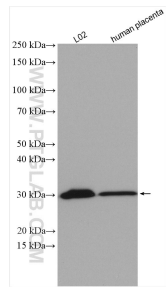
For technical support and original validation data for this product please contact:

T: 1 (888) 4PTGLAB (1-888-478-4522) (toll free in USA), or 1(312) 455-8498 (outside USA)

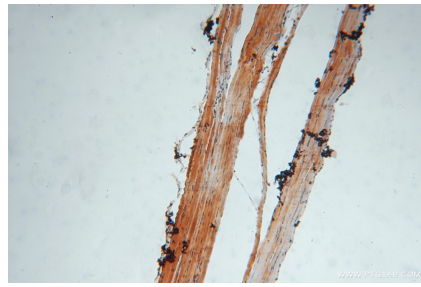
E: proteintech@ptglab.com  
W: ptglab.com

This product is exclusively available under Proteintech Group brand and is not available to purchase from any other manufacturer.

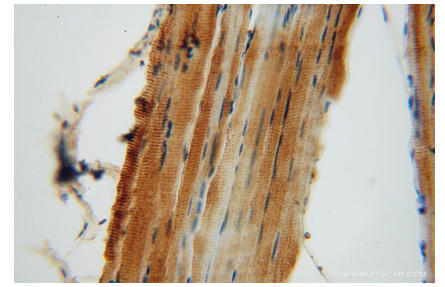
## Selected Validation Data



Various lysates were subjected to SDS PAGE followed by western blot with 14841-1-AP (SLC25A6-Specific antibody) at dilution of 1:1000 incubated at room temperature for 1.5 hours.



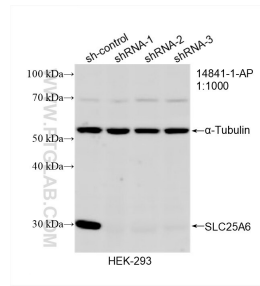
Immunohistochemical analysis of paraffin-embedded human skeletal muscle using 14841-1-AP (SLC25A6-Specific antibody) at dilution of 1:100 (under 10x lens).



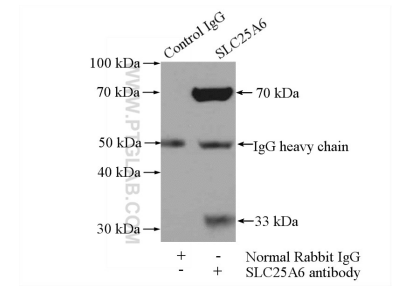
Immunohistochemical analysis of paraffin-embedded human skeletal muscle using 14841-1-AP (SLC25A6-Specific antibody) at dilution of 1:100 (under 40x lens).



Immunofluorescent analysis of HepG2 cells using 14841-1-AP (SLC25A6-Specific antibody) at dilution of 1:25 and Rhodamine-Goat anti-Rabbit IgG.



WB result of SLC25A6-Specific antibody (14841-1-AP; 1:1000; incubated at room temperature for 1.5 hours) with sh-Control and sh-SLC25A6-Specific transfected HEK-293 cells.



IP Result of anti-SLC25A6-Specific (IP:14841-1-AP, 4ug; Detection:14841-1-AP 1:500) with mouse liver tissue lysate 4000ug.