

For Research Use Only

# Connexin-26 Polyclonal antibody

Catalog Number: 14842-1-AP

Featured Product

1 Publications



## Basic Information

### Catalog Number:

14842-1-AP

### Size:

150ul, Concentration: 300 ug/ml by Nanodrop and 207 ug/ml by Bradford method using BSA as the standard;

### Source:

Rabbit

### Isotype:

IgG

### GenBank Accession Number:

NM\_004004

### GeneID (NCBI):

2706

### UNIPROT ID:

P29033

### Full Name:

gap junction protein, beta 2, 26kDa

### Calculated MW:

26 kDa

### Observed MW:

26 kDa

### Purification Method:

Antigen affinity purification

### Recommended Dilutions:

WB 1:500-1:2000

## Applications

### Tested Applications:

WB, ELISA

### Cited Applications:

WB, IF

### Species Specificity:

human, mouse

### Cited Species:

human

### Positive Controls:

WB : human heart tissue, mouse brain tissue

## Background Information

The gap junctions were first characterized by electron microscopy as regionally specialized structures on plasma membranes of contacting adherent cells. These structures were shown to consist of cell-to-cell channels that facilitate the transfer of ions and small molecules between cells. The gap junction proteins, also known as connexins, purified from fractions of enriched gap junctions from different tissues differ. According to sequence similarities at the nucleotide and amino acid levels, the gap junction proteins are divided into two categories, alpha and beta. Connexin-26 (GJB2) is a beta class gap junction protein. Mutations in the gene for connexin-26 are responsible for as much as 50% of pre-lingual, recessive deafness.

## Notable Publications

Author	Pubmed ID	Journal	Application
Stefania Monterisi	36107487	Elife	WB,IF

## Storage

### Storage:

Store at -20°C. Stable for one year after shipment.

### Storage Buffer:

PBS with 0.02% sodium azide and 50% glycerol pH 7.3.

Aliquoting is unnecessary for -20°C storage

\*\*\* 20ul sizes contain 0.1% BSA

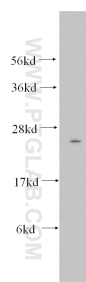
For technical support and original validation data for this product please contact:

T: 1 (888) 4PTGLAB (1-888-478-4522) (toll free in USA), or 1(312) 455-8498 (outside USA)

E: [proteintech@ptglab.com](mailto:proteintech@ptglab.com)  
W: [ptglab.com](http://ptglab.com)

This product is exclusively available under Proteintech Group brand and is not available to purchase from any other manufacturer.

## Selected Validation Data



human heart tissue were subjected to SDS PAGE followed by western blot with 14842-1-AP (Connexin-26 antibody) at dilution of 1:500 incubated at room temperature for 1.5 hours.