

For Research Use Only

CRISP3 Polyclonal antibody

Catalog Number: 14843-1-AP



Basic Information

Catalog Number: 14843-1-AP	GenBank Accession Number: NM_006061	Purification Method: Antigen affinity purification
Size: 150ul , Concentration: 400 µg/ml by Nanodrop and 227 µg/ml by Bradford method using BSA as the standard;	GeneID (NCBI): 10321	
Source: Rabbit	Full Name: cysteine-rich secretory protein 3	
Isotype: IgG	Calculated MW: 28 kDa	

Applications

Tested Applications:
IHC, WB, ELISA

Species Specificity:
human

Background Information

CRISP3, also known as SGP28, is a glycoprotein that belongs to a family of cysteine-rich secretory proteins (CRISPs). CRISP3 was originally discovered in human neutrophils, but transcripts are widely distributed in exocrine glands (salivary glands, pancreas, and prostate) and also found at lower levels in epididymis, ovary, thymus, and colon. CRISP3 is a potential biomarker for prostate cancer. This antibody can recognize human CRISP3 only.

Storage

Storage:
Store at -20°C. Stable for one year after shipment.

Storage Buffer:
PBS with 0.02% sodium azide and 50% glycerol pH 7.3.

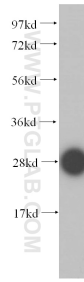
Aliquoting is unnecessary for -20°C storage

*** 20ul sizes contain 0.1% BSA

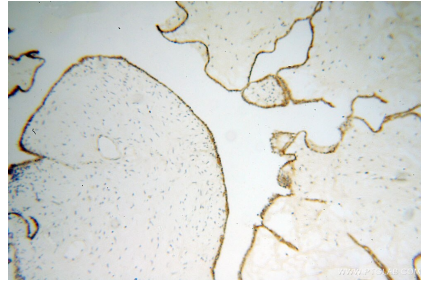
For technical support and original validation data for this product please contact:
T: 1 (888) 4PTGLAB (1-888-478-4522) (toll free in USA), or 1(312) 455-8498 (outside USA) E: proteintech@ptglab.com
W: ptglab.com

This product is exclusively available under Proteintech Group brand and is not available to purchase from any other manufacturer.

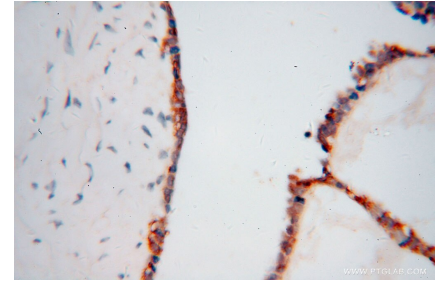
Selected Validation Data



mouse thymus tissue were subjected to SDS PAGE followed by western blot with 14843-1-AP (CRISP3 antibody) at dilution of 1:300 incubated at room temperature for 1.5 hours.



Immunohistochemical analysis of paraffin-embedded human ovary tumor using 14843-1-AP (CRISP3 antibody) at dilution of 1:50 (under 10x lens).



Immunohistochemical analysis of paraffin-embedded human ovary tumor using 14843-1-AP (CRISP3 antibody) at dilution of 1:50 (under 40x lens).