

For Research Use Only

SEC61B-Specific Polyclonal antibody



Catalog Number: 14846-1-AP

1 Publications

Basic Information

| | | |
|--|---|--|
| Catalog Number: 14846-1-AP | GenBank Accession Number: NM_006808 | Purification Method: Antigen affinity purification |
| Size: 150ul, Concentration: 500 µg/ml by Nanodrop; | GeneID (NCBI): 10952 | Recommended Dilutions: WB 1:1000-1:4000 IHC 1:500-1:2000 IF 1:50-1:500 |
| Source: Rabbit | Full Name: Sec61 beta subunit | |
| Isotype: IgG | Calculated MW: 10 kDa | |
| | Observed MW: 10-15 kDa | |

Applications

Tested Applications:

IF, IHC, WB, ELISA

Cited Applications:

WB

Species Specificity:

human, mouse, rat

Cited Species:

human

Note-IHC: suggested antigen retrieval with TE buffer pH 9.0; (*) Alternatively, antigen retrieval may be performed with citrate buffer pH 6.0

Positive Controls:

WB: HEK-293 cells, HeLa cells, human kidney tissue, mouse kidney tissue, mouse liver tissue, rat kidney tissue

IHC: mouse liver tissue, human cervical cancer tissue, human liver tissue

IF: mouse pancreas tissue, HeLa cells

Background Information

The heteromeric SEC61 complex is composed of alpha, beta and gamma subunits. Oligomers of the SEC61 complex form a transmembrane channel where proteins are translocated across and integrated into the ER membrane (PMID: 10212142). SEC61B is the beta subunit of the SEC61 complex. It has been reported that SEC61B facilitates cotranslational protein transport and interacts with the signal peptidase during translocation (PMID: 9585408).

Notable Publications

| Author | Pubmed ID | Journal | Application |
|--------------|-----------|-------------|-------------|
| Mio Kawabata | 33760868 | PLoS Pathog | WB |

Storage

Storage:

Store at -20°C. Stable for one year after shipment.

Storage Buffer:

PBS with 0.02% sodium azide and 50% glycerol pH 7.3.

Aliquoting is unnecessary for -20°C storage

*** 20ul sizes contain 0.1% BSA

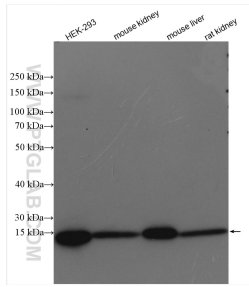
For technical support and original validation data for this product please contact:

T: 1 (888) 4PTGLAB (1-888-478-4522) (toll free in USA), or 1(312) 455-8498 (outside USA)

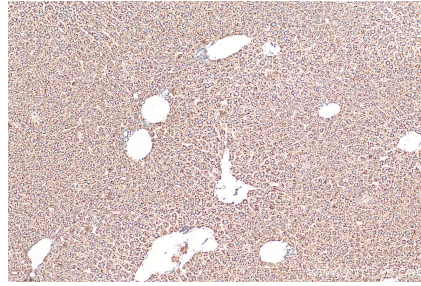
E: proteintech@ptglab.com
W: ptglab.com

This product is exclusively available under Proteintech Group brand and is not available to purchase from any other manufacturer.

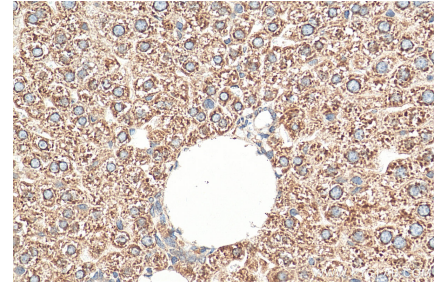
Selected Validation Data



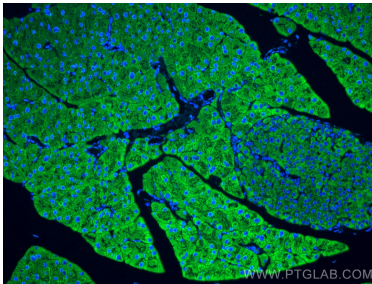
Various lysates were subjected to SDS PAGE followed by western blot with 14846-1-AP (SEC61B-Specific antibody) at dilution of 1:2000 incubated at room temperature for 1.5 hours.



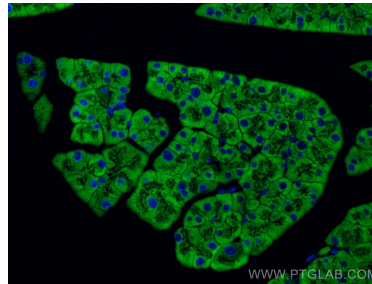
Immunohistochemical analysis of paraffin-embedded mouse liver tissue slide using 14846-1-AP (SEC61B-Specific antibody) at dilution of 1:1000 (under 10x Lens). Heat mediated antigen retrieval with Tris-EDTA buffer (pH 9.0).



Immunohistochemical analysis of paraffin-embedded mouse liver tissue slide using 14846-1-AP (SEC61B-Specific antibody) at dilution of 1:1000 (under 40x Lens). Heat mediated antigen retrieval with Tris-EDTA buffer (pH 9.0).



Immunofluorescent analysis of (4% PFA) fixed mouse pancreas tissue using SEC61B-Specific antibody (14846-1-AP) at dilution of 1:200 and CoraLite®488-Conjugated AffiniPure Goat Anti-Rabbit IgG(H+L).



Immunofluorescent analysis of (4% PFA) fixed mouse pancreas tissue using SEC61B-Specific antibody (14846-1-AP) at dilution of 1:200 and CoraLite®488-Conjugated AffiniPure Goat Anti-Rabbit IgG(H+L).