

For Research Use Only

# CRISP3 Polyclonal antibody

Catalog Number: 14847-1-AP

Featured Product

4 Publications



## Basic Information

### Catalog Number:

14847-1-AP

### Size:

150ul, Concentration: 650 ug/ml by Nanodrop and 427 ug/ml by Bradford method using BSA as the standard;

### Source:

Rabbit

### Isotype:

IgG

### GenBank Accession Number:

NM\_006061

### GeneID (NCBI):

10321

### UNIPROT ID:

P54108

### Full Name:

cysteine-rich secretory protein 3

### Calculated MW:

28 kDa

### Observed MW:

29 kDa

### Purification Method:

Antigen affinity purification

### Recommended Dilutions:

WB 1:1000-1:4000

IP 0.5-4.0 ug for 1.0-3.0 mg of total protein lysate

IHC 1:50-1:500

## Applications

### Tested Applications:

WB, IP, IHC, ELISA

### Cited Applications:

WB, IHC

### Species Specificity:

human, mouse

### Cited Species:

human

### Positive Controls:

**WB** : human saliva, human placenta tissue, Jurkat cells, mouse colon tissue, mouse ovary tissue, mouse thymus tissue

**IP** : human placenta tissue,

**IHC** : human prostate cancer tissue, human pancreas tissue

**Note-IHC: suggested antigen retrieval with TE buffer pH 9.0; (\*) Alternatively, antigen retrieval may be performed with citrate buffer pH 6.0**

## Background Information

CRISP3, also known as SGP28, is a glycoprotein that belongs to a family of cysteine-rich secretory proteins (CRISPs). CRISP3 was originally discovered in human neutrophils, but transcripts are widely distributed in exocrine glands (salivary glands, pancreas, and prostate) and also found at lower levels in epididymis, ovary, thymus, and colon. CRISP3 is a potential biomarker for prostate cancer. This antibody can recognize both CRISP2 and CRISP3.

## Notable Publications

Author	Pubmed ID	Journal	Application
Yu-Ming Wang	36263172	Int J Biol Sci	WB, IHC
X Liu	36267015	J Dent Res	WB
Paola A Rojas	28376177	J Natl Cancer Inst	IHC

## Storage

### Storage:

Store at -20°C. Stable for one year after shipment.

### Storage Buffer:

PBS with 0.02% sodium azide and 50% glycerol pH 7.3.

Aliquoting is unnecessary for -20°C storage

\*\*\* 20ul sizes contain 0.1% BSA

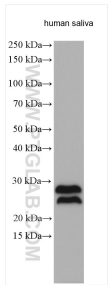
For technical support and original validation data for this product please contact:

T: 1 (888) 4PTGLAB (1-888-478-4522) (toll free in USA), or 1(312) 455-8498 (outside USA)

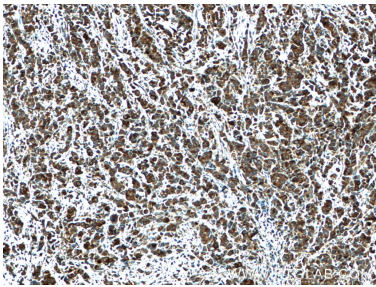
E: [proteintech@ptglab.com](mailto:proteintech@ptglab.com)  
W: [ptglab.com](http://ptglab.com)

This product is exclusively available under Proteintech Group brand and is not available to purchase from any other manufacturer.

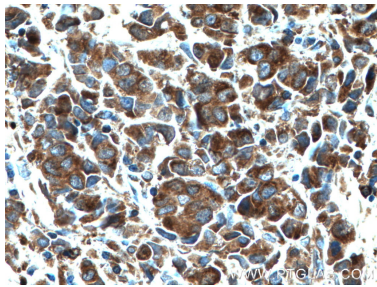
Selected Validation Data



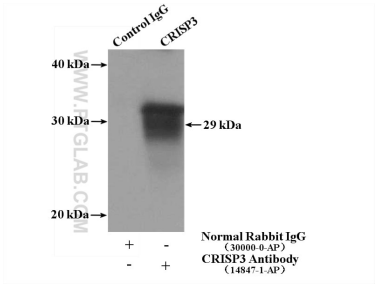
human saliva samples were subjected to SDS PAGE followed by western blot with 14847-1-AP (CRISP3 antibody) at dilution of 1:2000 incubated at room temperature for 1.5 hours.



Immunohistochemical analysis of paraffin-embedded human prostate cancer tissue slide using 14847-1-AP (CRISP3 antibody) at dilution of 1:200 (under 10x lens. Heat mediated antigen retrieval with Tris-EDTA buffer (pH 9.0).



Immunohistochemical analysis of paraffin-embedded human prostate cancer tissue slide using 14847-1-AP (CRISP3 antibody) at dilution of 1:200 (under 40x lens. Heat mediated antigen retrieval with Tris-EDTA buffer (pH 9.0).



IP result of anti-CRISP3 (IP:14847-1-AP, 4ug; Detection:14847-1-AP 1:300) with human placenta tissue lysate 1520ug.