

For Research Use Only

# KLHL14-Specific Polyclonal antibody

Catalog Number: 14849-1-AP

Featured Product

1 Publications



## Basic Information

### Catalog Number:

14849-1-AP

### Size:

150ul, Concentration: 900 ug/ml by Nanodrop;

### Source:

Rabbit

### Isotype:

IgG

### GenBank Accession Number:

NM\_020805

### GeneID (NCBI):

57565

### UNIPROT ID:

Q9P2G3

### Full Name:

kelch-like 14 (Drosophila)

### Calculated MW:

70 kDa

### Observed MW:

39-45 kDa

### Purification Method:

Antigen affinity purification

### Recommended Dilutions:

WB 1:500-1:2000

IHC 1:20-1:200

IF/ICC 1:50-1:500

## Applications

### Tested Applications:

WB, IHC, IF/ICC, ELISA

### Cited Applications:

WB

### Species Specificity:

human, mouse, rat

### Cited Species:

human

### Positive Controls:

**WB** : HeLa cells, mouse heart tissue, mouse testis tissue, mouse lung tissue, mouse liver tissue, SH-SY5Y cells, mouse brain tissue, mouse ovary tissue, HepG2 cells, rat brain tissue

**IHC** : human heart tissue, human cervical cancer tissue

**IF/ICC** : HepG2 cells,

**Note-IHC: suggested antigen retrieval with TE buffer pH 9.0; (\*) Alternatively, antigen retrieval may be performed with citrate buffer pH 6.0**

## Background Information

KLHL14, a member of the Kelch-like gene family, has six Kelch domains and is localized to the endoplasmic reticulum. KLHL14, a novel tumor suppressor, is a subunit of a ubiquitin ligase that associates with the endoplasmic reticulum-associated protein degradation (ERAD) machinery, regulating of B cell receptor-dependent NF- $\kappa$ B signaling (PMID: 32127472). KLHL14 has two isoforms of 70kDa and 43kDa.

## Notable Publications

Author	Pubmed ID	Journal	Application
Zheng Chen	33425096	Int J Clin Exp Pathol	WB

## Storage

### Storage:

Store at -20°C. Stable for one year after shipment.

### Storage Buffer:

PBS with 0.02% sodium azide and 50% glycerol pH 7.3.

Aliquoting is unnecessary for -20°C storage

\*\*\* 20ul sizes contain 0.1% BSA

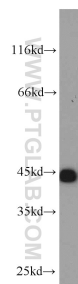
For technical support and original validation data for this product please contact:

T: 1 (888) 4PTGLAB (1-888-478-4522) (toll free in USA), or 1(312) 455-8498 (outside USA)

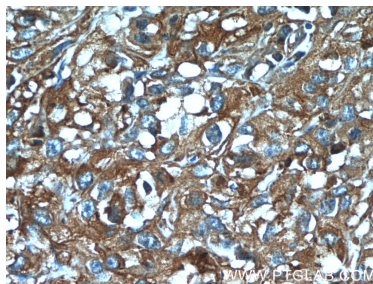
E: [proteintech@ptglab.com](mailto:proteintech@ptglab.com)  
W: [ptglab.com](http://ptglab.com)

This product is exclusively available under Proteintech Group brand and is not available to purchase from any other manufacturer.

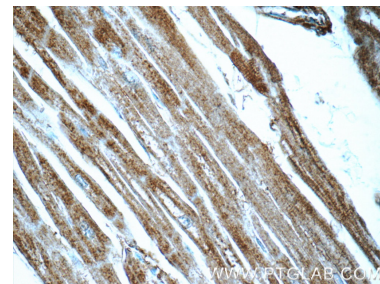
## Selected Validation Data



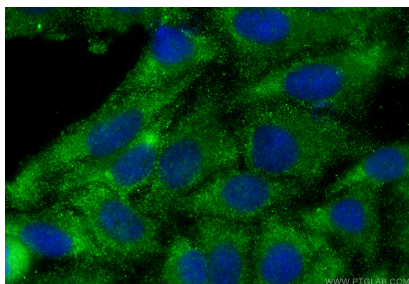
HeLa cells were subjected to SDS PAGE followed by western blot with 14849-1-AP (KLHL14-Specific antibody) at dilution of 1:1000 incubated at room temperature for 1.5 hours.



Immunohistochemical analysis of paraffin-embedded human cervical cancer tissue slide using 14849-1-AP (KLHL14-Specific Antibody) at dilution of 1:50 (under 40x lens).



Immunohistochemical analysis of paraffin-embedded human heart tissue slide using 14849-1-AP (KLHL14-Specific Antibody) at dilution of 1:50 (under 40x lens).



Immunofluorescent analysis of (-20°C Ethanol) fixed HepG2 cells using KLHL14-Specific antibody (14849-1-AP) at dilution of 1:200 and CoraLite®488-Conjugated Goat Anti-Rabbit IgG(H+L) (SA00013-2).