

For Research Use Only

# KLHL14-Specific Polyclonal antibody, PBS Only

Catalog Number: 14849-1-PBS

Featured Product



## Basic Information

**Catalog Number:**

14849-1-PBS

**Size:**

100ug, Concentration: 1 mg/ml by  
Nanodrop;

**Source:**

Rabbit

**Isotype:**

IgG

**GenBank Accession Number:**

NM\_020805

**GeneID (NCBI):**

57565

**UNIPROT ID:**

Q9P2G3

**Full Name:**

kelch-like 14 (Drosophila)

**Calculated MW:**

70 kDa

**Observed MW:**

39-45 kDa

**Purification Method:**

Antigen affinity purification

## Applications

**Tested Applications:**

WB, IHC, IF/ICC, Indirect ELISA

**Species Specificity:**

human, mouse, rat

## Background Information

KLHL14, a member of the Kelch-like gene family, has six Kelch domains and is localized to the endoplasmic reticulum. KLHL14, a novel tumor suppressor, is a subunit of a ubiquitin ligase that associates with the endoplasmic reticulum-associated protein degradation (ERAD) machinery, regulating of B cell receptor-dependent NF- $\kappa$ B signaling (PMID: 32127472). KLHL14 has two isoforms of 70kDa and 43kDa.

## Storage

**Storage:**

Store at -80°C.

**Storage Buffer:**

PBS Only

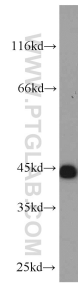
For technical support and original validation data for this product please contact:

T: 1 (888) 4PTGLAB (1-888-478-4522) (toll free  
in USA), or 1(312) 455-8498 (outside USA)

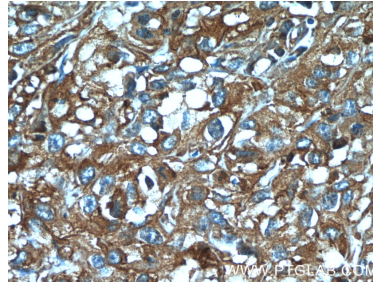
E: [proteintech@ptglab.com](mailto:proteintech@ptglab.com)  
W: [ptglab.com](http://ptglab.com)

This product is exclusively available under Proteintech Group brand and is not available to purchase from any other manufacturer.

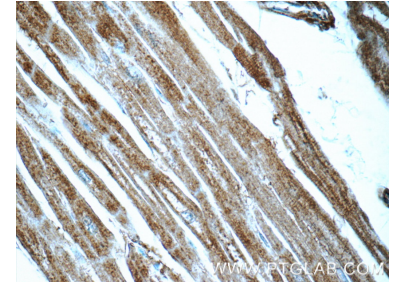
## Selected Validation Data



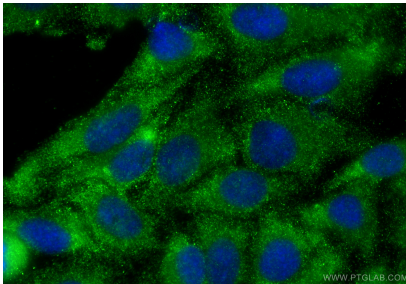
HeLa cells were subjected to SDS PAGE followed by western blot with 14849-1-AP (KLHL14-Specific antibody) at dilution of 1:1000 incubated at room temperature for 1.5 hours. This data was developed using the same antibody clone with 14849-1-PBS in a different storage buffer formulation.



Immunohistochemical analysis of paraffin-embedded human cervical cancer tissue slide using 14849-1-AP (KLHL14-Specific Antibody) at dilution of 1:50 (under 40x lens). This data was developed using the same antibody clone with 14849-1-PBS in a different storage buffer formulation.



Immunohistochemical analysis of paraffin-embedded human heart tissue slide using 14849-1-AP (KLHL14-Specific Antibody) at dilution of 1:50 (under 40x lens). This data was developed using the same antibody clone with 14849-1-PBS in a different storage buffer formulation.



Immunofluorescent analysis of (-20°C Ethanol) fixed HepG2 cells using KLHL14-Specific antibody (14849-1-AP) at dilution of 1:200 and CoraLite®488-Conjugated Goat Anti-Rabbit IgG(H+L) (SA00013-2). This data was developed using the same antibody clone with 14849-1-PBS in a different storage buffer formulation.