

For Research Use Only

COL6A2 Polyclonal antibody

Catalog Number: 14853-1-AP

9 Publications



Basic Information

Catalog Number:

14853-1-AP

Size:

150ul, Concentration: 500 ug/ml by Nanodrop and 267 ug/ml by Bradford method using BSA as the standard;

Source:

Rabbit

Isotype:

IgG

Immunogen Catalog Number:

AG6635

GenBank Accession Number:

BC065509

GeneID (NCBI):

1292

UNIPROT ID:

P12110

Full Name:

collagen, type VI, alpha 2

Calculated MW:

109 kDa

Observed MW:

140 kDa

Purification Method:

Antigen affinity purification

Recommended Dilutions:

WB 1:1000-1:4000

IHC 1:500-1:2000

Applications

Tested Applications:

WB, IHC, ELISA

Cited Applications:

WB, IHC, IF

Species Specificity:

human, pig

Cited Species:

human

Positive Controls:

WB : human placenta tissue, pig skin tissue, human heart tissue

IHC : human stomach tissue, human liver cancer tissue, human normal colon

Note-IHC: suggested antigen retrieval with TE buffer pH 9.0; (*) Alternatively, antigen retrieval may be performed with citrate buffer pH 6.0

Background Information

Collagen VI, composed of three polypeptides, alpha-1(VI), alpha-2(VI), and alpha-3(VI) chains, is a beaded filament collagen found in most connective tissues. The alpha-1(VI) and alpha-2(VI) chains are 140 kDa, while the alpha-3(VI) chain is 200-300 kDa (PMID: 3792302, 3348212). COL6A2 gene encodes the alpha-2 subunit of type VI collagen. The alpha-2(VI) subunit has a calculated molecular weight of 109 kDa, and an apparent molecular weight of 140 kDa due to posttranslational modification. Mutations in COL6A2 gene are associated with Bethlem myopathy and Ullrich scleroatonic muscular dystrophy. Three transcript variants have been identified for this gene.

Notable Publications

Author	Pubmed ID	Journal	Application
Emna Ouni	35341935	Matrix Biol	IF
Naomi A Carne	30890563	Mol Cell Proteomics	WB
Naomi A. Carne	33526191	Mol Cell Proteomics	WB

Storage

Storage:

Store at -20°C. Stable for one year after shipment.

Storage Buffer:

PBS with 0.02% sodium azide and 50% glycerol

Aliquoting is unnecessary for -20°C storage

*** 20ul sizes contain 0.1% BSA

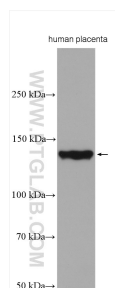
For technical support and original validation data for this product please contact:

T: 1 (888) 4PTGLAB (1-888-478-4522) (toll free in USA), or 1(312) 455-8498 (outside USA)

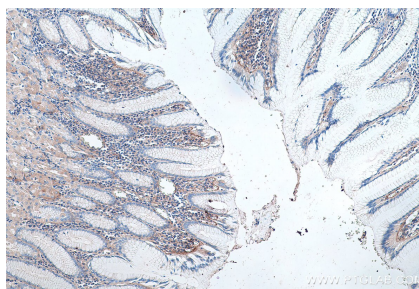
E: proteintech@ptglab.com
W: ptglab.com

This product is exclusively available under Proteintech Group brand and is not available to purchase from any other manufacturer.

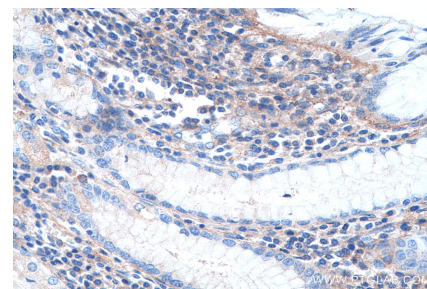
Selected Validation Data



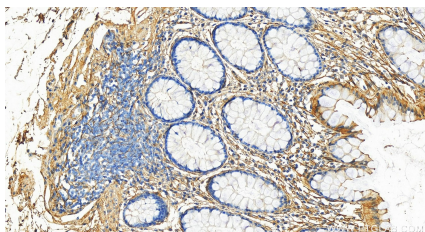
human placenta tissue were subjected to SDS PAGE followed by western blot with 14853-1-AP (Collagen Type VI antibody) at dilution of 1:4000 incubated at room temperature for 1.5 hours.



Immunohistochemical analysis of paraffin-embedded human stomach tissue slide using 14853-1-AP (Collagen Type VI antibody) at dilution of 1:1000 (under 10x lens). Heat mediated antigen retrieval with Tris-EDTA buffer (pH 9.0).



Immunohistochemical analysis of paraffin-embedded human stomach tissue slide using 14853-1-AP (Collagen Type VI antibody) at dilution of 1:1000 (under 40x lens). Heat mediated antigen retrieval with Tris-EDTA buffer (pH 9.0).



Immunohistochemical analysis of paraffin-embedded human colon tissue slide using 14853-1-AP (Collagen Type VI antibody) at dilution of 1:800 (under 20x lens). Heat mediated antigen retrieval with Tris-EDTA buffer (pH 9.0).