

For Research Use Only

CTRL Polyclonal antibody

Catalog Number: 14856-1-AP **3 Publications**



Basic Information

Catalog Number: 14856-1-AP	GenBank Accession Number: BC063475	Purification Method: Antigen affinity purification
Size: 150ul , Concentration: 140 µg/ml by Nanodrop and 140 µg/ml by Bradford method using BSA as the standard;	GeneID (NCBI): 1506	Recommended Dilutions: WB 1:1000-1:6000 IHC 1:20-1:200 IF 1:10-1:100
Source: Rabbit	Full Name: chymotrypsin-like	
Isotype: IgG	Calculated MW: 28 kDa	
Immunogen Catalog Number: AG6644	Observed MW: 25-28 kDa	

Applications

Tested Applications: IF, IHC, WB, ELISA	Positive Controls: WB : mouse pancreas tissue, BxPC-3 cells
Cited Applications: WB	IHC : human pancreas tissue,
Species Specificity: human, mouse, rat	IF : BxPC-3 cells,
Cited Species: human, mouse	

Note-IHC: suggested antigen retrieval with TE buffer pH 9.0; (*) Alternatively, antigen retrieval may be performed with citrate buffer pH 6.0

Background Information

CTRL(Chymotrypsin-like protease) is also named as CTRL1 and belongs to the peptidase S1 family. The CTRL1 enzyme is active over a broad pH range. It expresses in pancreas and presence in intestinal fluid after stimulation of pancreatic secretion as a digestive enzyme(PMID:9065485). This gene encode a protein of 264 amino acid and the protein has a signal peptide of 18 amino acid and a propeptide of 15 amino acid.

Notable Publications

Author	Pubmed ID	Journal	Application
Timothy L Hostelley	34125181	Biol Open	WB
Susan A Maroney	30086574	Thromb Haemost	WB
Yingying Xie	27081040	Oncotarget	

Storage

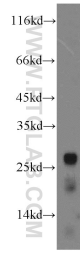
Storage:
Store at -20°C. Stable for one year after shipment.
Storage Buffer:
PBS with 0.02% sodium azide and 50% glycerol pH 7.3.
Aliquoting is unnecessary for -20°C storage

***** 20ul sizes contain 0.1% BSA**

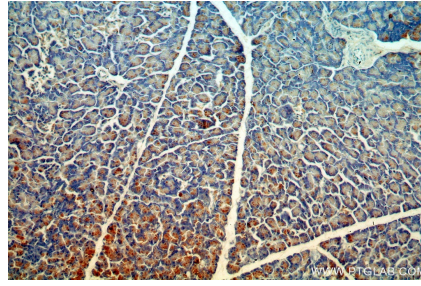
For technical support and original validation data for this product please contact:
T: 1 (888) 4PTGLAB (1-888-478-4522) (toll free in USA), or 1(312) 455-8498 (outside USA)
E: proteintech@ptglab.com
W: ptglab.com

This product is exclusively available under Proteintech Group brand and is not available to purchase from any other manufacturer.

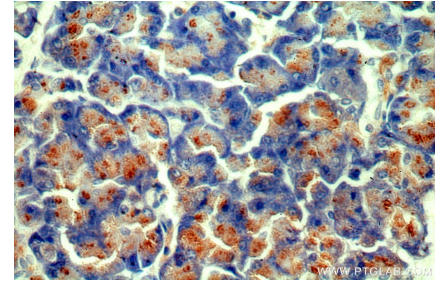
Selected Validation Data



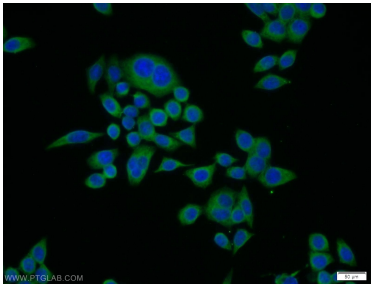
mouse pancreas tissue were subjected to SDS PAGE followed by western blot with 14856-1-AP (CTRL antibody) at dilution of 1:3000 incubated at room temperature for 1.5 hours.



Immunohistochemical analysis of paraffin-embedded human pancreas using 14856-1-AP (CTRL antibody) at dilution of 1:100 (under 10x lens).



Immunohistochemical analysis of paraffin-embedded human pancreas using 14856-1-AP (CTRL antibody) at dilution of 1:100 (under 40x lens).



Immunofluorescent analysis of BxPC-3 cells using 14856-1-AP (CTRL antibody) at dilution of 1:25 and Alexa Fluor 488-conjugated AffiniPure Goat Anti-Rabbit IgG(H+L).