

PSMB8 Polyclonal antibody

Catalog Number: 14859-1-AP

7 Publications

Basic Information

Catalog Number:

14859-1-AP

Size:

150ul, Concentration: 400 µg/ml by Nanodrop and 307 µg/ml by Bradford method using BSA as the standard;

Source:

Rabbit

Isotype:

IgG

Immunogen Catalog Number:

AG6660

GenBank Accession Number:

BC001114

GeneID (NCBI):

5696

Full Name:

proteasome (prosome, macropain) subunit, beta type, 8 (large multifunctional peptidase 7)

Calculated MW:

30 kDa

Observed MW:

23 kDa

Purification Method:

Antigen affinity purification

Recommended Dilutions:

WB 1:500-1:2000
IP 0.5-4.0 µg for IP and 1:500-1:2000 for WB
IHC 1:20-1:200
IF 1:50-1:500

Applications

Tested Applications:

FC, IF, IHC, IP, WB, ELISA

Cited Applications:

IHC, WB

Species Specificity:

human, mouse

Cited Species:

human, mouse

Note-IHC: suggested antigen retrieval with TE buffer pH 9.0; (*) Alternatively, antigen retrieval may be performed with citrate buffer pH 6.0

Positive Controls:

WB: mouse kidney tissue, human kidney tissue, Jurkat cells, Raji cells

IP: Raji cells,

IHC: human lymphoma tissue,

IF: HepG2 cells,

Background Information

PSMB8 (Proteasome subunit beta type-8) is also named as LMP7, PSMB5i, RING10, Y2 and belongs to the peptidase T1B family. The gene encodes the chymotrypsin-like catalytic subunit of the immunoproteasome (PMID: 19525961). PSMB8 has a role in controlling pathogenic immune responses and may be a target in autoimmune disorders. Its prosequence is not essential for incorporation of PSMB8 into the maturing proteasome, but it increased the efficiency of PSMB8 incorporation and proteasome maturation (PMID: 10926487). The pro-PSMB8 is a 276aa protein with the molecular mass of 30 kDa, and the mature form is about 23kDa due to the 72aa propeptide cleaved. Defects in PSMB8 are the cause of Nakajo syndrome (NKJO).

Notable Publications

Author	Pubmed ID	Journal	Application
Xinlong Fan	31559672	J Cell Mol Med	WB
Hiroyuki Kondo	31915251	J Biol Chem	WB, IHC
Yuwei Zhang	35219165	Int Immunopharmacol	

Storage

Storage:

Store at -20°C. Stable for one year after shipment.

Storage Buffer:

PBS with 0.02% sodium azide and 50% glycerol pH 7.3.

Aliquoting is unnecessary for -20°C storage

*** 20ul sizes contain 0.1% BSA

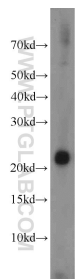
For technical support and original validation data for this product please contact:

T: 1 (888) 4PTGLAB (1-888-478-4522) (toll free in USA), or 1(312) 455-8498 (outside USA)

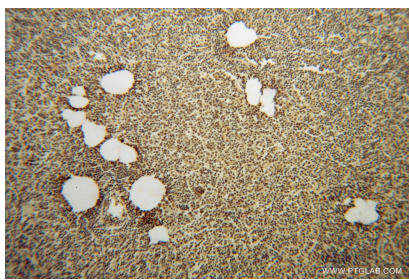
E: proteintech@ptglab.com
W: ptglab.com

This product is exclusively available under Proteintech Group brand and is not available to purchase from any other manufacturer.

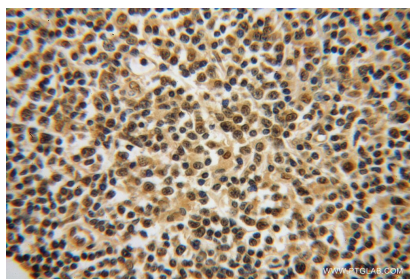
Selected Validation Data



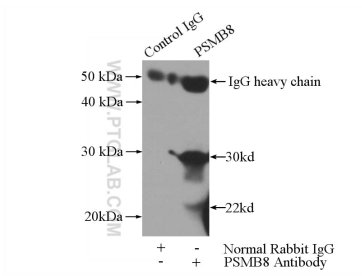
mouse kidney tissue were subjected to SDS PAGE followed by western blot with 14859-1-AP (LMP7 antibody) at dilution of 1:1000 incubated at room temperature for 1.5 hours.



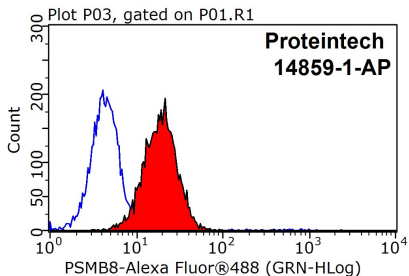
Immunohistochemical analysis of paraffin-embedded human lymphoma using 14859-1-AP (LMP7 antibody) at dilution of 1:50 (under 10x lens).



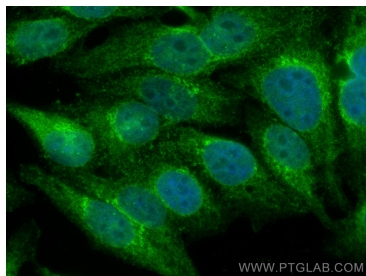
Immunohistochemical analysis of paraffin-embedded human lymphoma using 14859-1-AP (LMP7 antibody) at dilution of 1:50 (under 40x lens).



IP Result of anti-LMP7 (IP:14859-1-AP, 3ug; Detection:14859-1-AP 1:1000) with Raji cells lysate 2800ug.



1X10⁶ HepG2 cells were stained with 0.2ug LMP7 antibody (14859-1-AP, red) and control antibody (blue). Fixed with 90% MeOH blocked with 3% BSA (30 min). Alexa Fluor 488-conjugated AffiniPure Goat Anti-Rabbit IgG(H+L) with dilution 1:1500.



Immunofluorescent analysis of (4% PFA) fixed HepG2 cells using PSMB8 antibody (14859-1-AP) at dilution of 1:200 and CoraLite@488-Conjugated AffiniPure Goat Anti-Rabbit IgG(H+L).