

For Research Use Only

AKTIP Polyclonal antibody

Catalog Number: 14860-1-AP

1 Publications



Basic Information

Catalog Number:

14860-1-AP

Size:

150ul, Concentration: 213 µg/ml by Nanodrop and 213 µg/ml by Bradford method using BSA as the standard;

Source:

Rabbit

Isotype:

IgG

Immunogen Catalog Number:

AG6662

GenBank Accession Number:

BC001134

GeneID (NCBI):

64400

Full Name:

AKT interacting protein

Calculated MW:

32 kDa

Observed MW:

33 kDa

Purification Method:

Antigen affinity purification

Recommended Dilutions:

WB 1:500-1:1000

IP 0.5-4.0 µg for IP and 1:200-1:1000 for WB

IF 1:50-1:500

Applications

Tested Applications:

IF, IP, WB, ELISA

Cited Applications:

WB

Species Specificity:

human, mouse, rat

Cited Species:

human

Positive Controls:

WB : HepG2 cells,

IP : HepG2 cells,

IF : SH-SY5Y cells,

Background Information

Notable Publications

Author	Pubmed ID	Journal	Application
Angel S N Ng	36516775	Cell Rep	WB

Storage

Storage:

Store at -20°C. Stable for one year after shipment.

Storage Buffer:

PBS with 0.02% sodium azide and 50% glycerol pH 7.3.

Aliquoting is unnecessary for -20°C storage

*** 20ul sizes contain 0.1% BSA

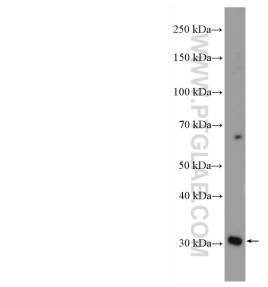
For technical support and original validation data for this product please contact:

T: 1 (888) 4PTGLAB (1-888-478-4522) (toll free in USA), or 1(312) 455-8498 (outside USA)

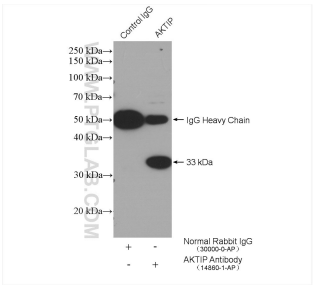
E: proteintech@ptglab.com
W: ptglab.com

This product is exclusively available under Proteintech Group brand and is not available to purchase from any other manufacturer.

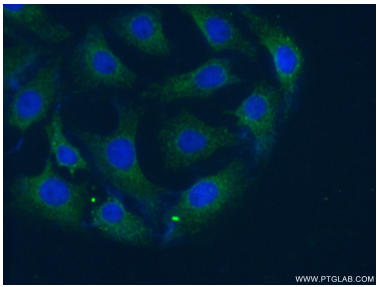
Selected Validation Data



HepG2 cells were subjected to SDS PAGE followed by western blot with 14860-1-AP (AKTIP antibody) at dilution of 1:600 incubated at room temperature for 1.5 hours.



IP result of anti-AKTIP (IP:14860-1-AP, 4ug; Detection:14860-1-AP 1:300) with HepG2 cells lysate 1680 ug.



Immunofluorescent analysis of (-20°C Ethanol) fixed SH-SY5Y cells using 14860-1-AP (AKTIP antibody) at dilution of 1:50 and Alexa Fluor 488-conjugated AffiniPure Goat Anti-Rabbit IgG(H+L).