

For Research Use Only

APPBP1 Polyclonal antibody

Catalog Number: 14863-1-AP

Featured Product

2 Publications



Basic Information

Catalog Number:

14863-1-AP

Size:

150ul, Concentration: 500 ug/ml by Nanodrop and 280 ug/ml by Bradford method using BSA as the standard;

Source:

Rabbit

Isotype:

IgG

Immunogen Catalog Number:

AG6672

GenBank Accession Number:

BC000480

GeneID (NCBI):

8883

UNIPROT ID:

Q13564

Full Name:

NEDD8 activating enzyme E1 subunit 1

Calculated MW:

60 kDa

Observed MW:

60 kDa

Purification Method:

Antigen affinity purification

Recommended Dilutions:

WB 1:500-1:2400

IP 0.5-4.0 ug for 1.0-3.0 mg of total protein lysate

IHC 1:250-1:1000

Applications

Tested Applications:

WB, IHC, IP, ELISA

Cited Applications:

WB, IHC

Species Specificity:

human, mouse, rat

Cited Species:

human

Note-IHC: suggested antigen retrieval with TE buffer pH 9.0; (*) Alternatively, antigen retrieval may be performed with citrate buffer pH 6.0

Positive Controls:

WB : human kidney tissue, human brain tissue, mouse brain tissue

IP : mouse kidney tissue,

IHC : mouse salivary gland tissue,

Notable Publications

Author	Pubmed ID	Journal	Application
Takumi Matsumoto	19706541	Proc Natl Acad Sci U S A	WB
Qinsong Liu	39296043	Heliyon	IHC

Storage

Storage:

Store at -20°C. Stable for one year after shipment.

Storage Buffer:

PBS with 0.02% sodium azide and 50% glycerol pH 7.3.

Aliquoting is unnecessary for -20°C storage

*** 20ul sizes contain 0.1% BSA

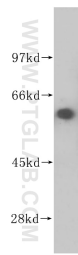
For technical support and original validation data for this product please contact:

T: 1 (888) 4PTGLAB (1-888-478-4522) (toll free in USA), or 1(312) 455-8498 (outside USA)

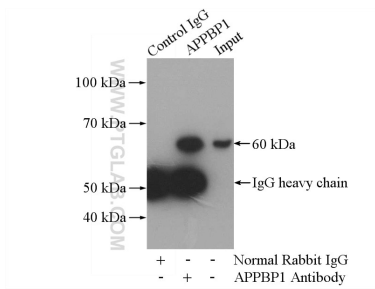
E: proteintech@ptglab.com
W: ptglab.com

This product is exclusively available under Proteintech Group brand and is not available to purchase from any other manufacturer.

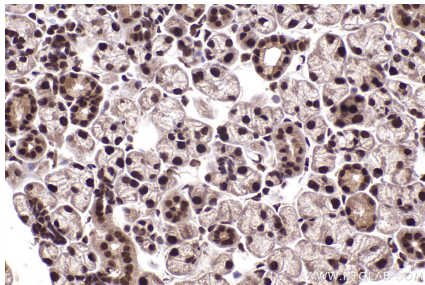
Selected Validation Data



human kidney tissue were subjected to SDS PAGE followed by western blot with 14863-1-AP (APBP1 antibody) at dilution of 1:400 incubated at room temperature for 1.5 hours.



IP result of anti-APPBP1 (IP:14863-1-AP, 4ug; Detection:14863-1-AP 1:500) with mouse kidney tissue lysate 4000ug.



Immunohistochemical analysis of paraffin-embedded mouse salivary gland tissue slide using 14863-1-AP (APBP1 antibody) at dilution of 1:500 (under 40x lens). Heat mediated antigen retrieval with Tris-EDTA buffer (pH 9.0).