

For Research Use Only

# PPOX Polyclonal antibody

Catalog Number: 14870-1-AP

1 Publications



## Basic Information

### Catalog Number:

14870-1-AP

### Size:

150ul , Concentration: 350 ug/ml by Nanodrop and 153 ug/ml by Bradford method using BSA as the standard;

### Source:

Rabbit

### Isotype:

IgG

### Immunogen Catalog Number:

AG6541

### GenBank Accession Number:

BC002357

### GeneID (NCBI):

5498

### UNIPROT ID:

P50336

### Full Name:

protoporphyrinogen oxidase

### Calculated MW:

51 kDa

### Observed MW:

51 kDa

### Purification Method:

Antigen affinity purification

### Recommended Dilutions:

WB 1:500-1:1000

IHC 1:20-1:200

## Applications

### Tested Applications:

WB, IHC, ELISA

### Cited Applications:

IHC

### Species Specificity:

human, mouse, rat

### Cited Species:

human

**Note-IHC: suggested antigen retrieval with TE buffer pH 9.0; (\*) Alternatively, antigen retrieval may be performed with citrate buffer pH 6.0**

### Positive Controls:

WB : human placenta tissue,

IHC : human kidney tissue,

## Notable Publications

Author	Pubmed ID	Journal	Application
Mario Mischkulnig	35665365	Front Med (Lausanne)	IHC

## Storage

### Storage:

Store at -20°C. Stable for one year after shipment.

### Storage Buffer:

PBS with 0.02% sodium azide and 50% glycerol pH 7.3.

Aliquoting is unnecessary for -20°C storage

\*\*\* 20ul sizes contain 0.1% BSA

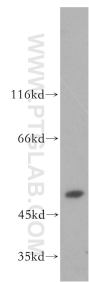
For technical support and original validation data for this product please contact:

T: 1 (888) 4PTGLAB (1-888-478-4522) (toll free in USA), or 1(312) 455-8498 (outside USA)

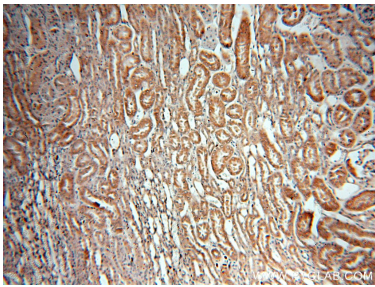
E: [proteintech@ptglab.com](mailto:proteintech@ptglab.com)  
W: [ptglab.com](http://ptglab.com)

This product is exclusively available under Proteintech Group brand and is not available to purchase from any other manufacturer.

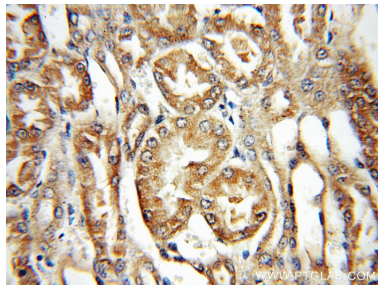
Selected Validation Data



human placenta tissue were subjected to SDS PAGE followed by western blot with 14870-1-AP (PPOX antibody) at dilution of 1:500 incubated at room temperature for 1.5 hours.



Immunohistochemical analysis of paraffin-embedded human kidney using 14870-1-AP (PPOX antibody) at dilution of 1:50 (under 10x lens).



Immunohistochemical analysis of paraffin-embedded human kidney using 14870-1-AP (PPOX antibody) at dilution of 1:50 (under 40x lens).