

For Research Use Only

POLM Polyclonal antibody

Catalog Number: 14873-1-AP



Basic Information

Catalog Number:

14873-1-AP

Size:

150ul , Concentration: 1200 ug/ml by Nanodrop and 240 ug/ml by Bradford method using BSA as the standard;

Source:

Rabbit

Isotype:

IgG

Immunogen Catalog Number:

AG6642

GenBank Accession Number:

BC062590

GeneID (NCBI):

27434

UNIPROT ID:

Q9NP87

Full Name:

polymerase (DNA directed), mu

Calculated MW:

55 kDa

Observed MW:

55 kDa

Purification Method:

Antigen affinity purification

Recommended Dilutions:

WB 1:500-1:1000

IHC 1:20-1:200

Applications

Tested Applications:

WB, IHC, ELISA

Species Specificity:

human

Note-IHC: suggested antigen retrieval with *TE buffer pH 9.0*; (*) Alternatively, antigen retrieval may be performed with *citrate buffer pH 6.0*

Positive Controls:

WB : Jurkat cells,

IHC : human spleen tissue, human brain tissue, human kidney tissue, human lung tissue, human ovary tissue, human skin tissue, human testis tissue

Storage

Storage:

Store at -20°C. Stable for one year after shipment.

Storage Buffer:

PBS with 0.02% sodium azide and 50% glycerol pH 7.3.

Aliquoting is unnecessary for -20°C storage

*** 20ul sizes contain 0.1% BSA

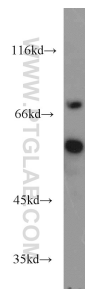
For technical support and original validation data for this product please contact:

T: 1 (888) 4PTGLAB (1-888-478-4522) (toll free in USA), or 1(312) 455-8498 (outside USA)

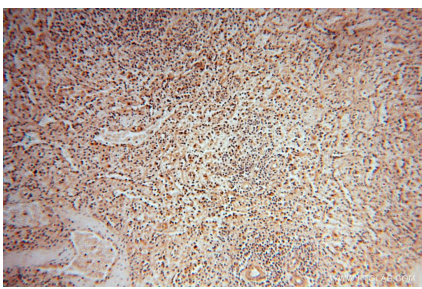
E: proteintech@ptglab.com
W: ptglab.com

This product is exclusively available under Proteintech Group brand and is not available to purchase from any other manufacturer.

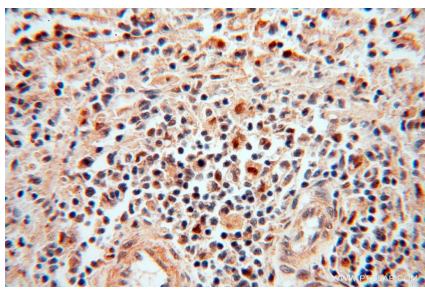
Selected Validation Data



Jurkat cells were subjected to SDS PAGE followed by western blot with 14873-1-AP (POLM antibody) at dilution of 1:800 incubated at room temperature for 1.5 hours.



Immunohistochemical analysis of paraffin-embedded human spleen using 14873-1-AP (POLM antibody) at dilution of 1:50 (under 10x lens).



Immunohistochemical analysis of paraffin-embedded human spleen using 14873-1-AP (POLM antibody) at dilution of 1:50 (under 40x lens).