

For Research Use Only

# DHODH Polyclonal antibody

Catalog Number: 14877-1-AP

Featured Product

80 Publications



## Basic Information

### Catalog Number:

14877-1-AP

### Size:

150ul, Concentration: 500 ug/ml by Nanodrop;

### Source:

Rabbit

### Isotype:

IgG

### Immunogen Catalog Number:

AG6649

### GenBank Accession Number:

BC065245

### GeneID (NCBI):

1723

### UNIPROT ID:

Q02127

### Full Name:

dihydroorotate dehydrogenase

### Calculated MW:

43 kDa

### Observed MW:

43 kDa

### Purification Method:

Antigen affinity purification

### Recommended Dilutions:

WB 1:2000-1:16000

IP 0.5-4.0 ug for 1.0-3.0 mg of total protein lysate

IHC 1:50-1:500

IF-P 1:50-1:500

## Applications

### Tested Applications:

WB, IHC, IF-P, FC (Intra), IP, ELISA

### Cited Applications:

WB, IHC, IF, IP

### Species Specificity:

human, mouse, rat

### Cited Species:

human, mouse, rat, chicken, goat

**Note-IHC: suggested antigen retrieval with TE buffer pH 9.0; (\*) Alternatively, antigen retrieval may be performed with citrate buffer pH 6.0**

### Positive Controls:

**WB:** A2780 cells, MCF-7 cells, SKOV-3 cells, mouse heart tissue, mouse ovary tissue, mouse spleen tissue, rat spleen tissue

**IP:** mouse spleen tissue,

**IHC:** human breast cancer tissue,

**IF-P:** mouse kidney tissue,

## Background Information

DHODH(Dihydroorotate dehydrogenase) catalyzes the fourth enzymatic step in de novo pyrimidine biosynthesis. DHO dehydrogenase is a monofunctional protein which, in most eukaryotic organisms, is located on the outer surface of the inner mitochondrial membrane. Defects in DHODH are the cause of postaxial acrofacial dysostosis (POADS).

## Notable Publications

Author	Pubmed ID	Journal	Application
William D Gwynne	36368321	Cancer Cell	IHC
Liangxian Cao	30352802	Mol Cancer Ther	WB
Naiara Santana-Codina	30470748	Nat Commun	WB

## Storage

### Storage:

Store at -20°C. Stable for one year after shipment.

### Storage Buffer:

PBS with 0.02% sodium azide and 50% glycerol

Aliquoting is unnecessary for -20°C storage

\*\*\* 20ul sizes contain 0.1% BSA

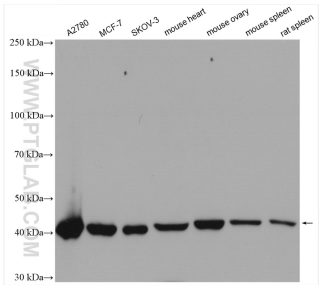
For technical support and original validation data for this product please contact:

T: 1 (888) 4PTGLAB (1-888-478-4522) (toll free in USA), or 1(312) 455-8498 (outside USA)

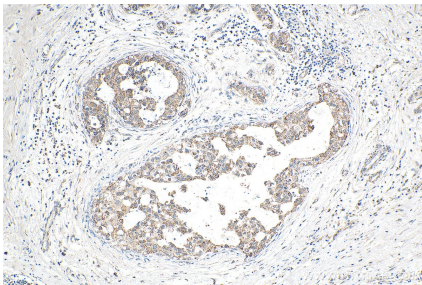
E: [proteintech@ptglab.com](mailto:proteintech@ptglab.com)  
W: [ptglab.com](http://ptglab.com)

This product is exclusively available under Proteintech Group brand and is not available to purchase from any other manufacturer.

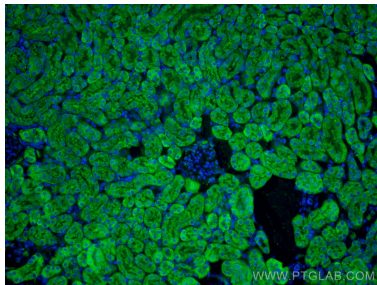
Selected Validation Data



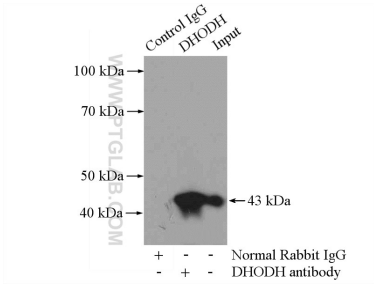
Various lysates were subjected to SDS PAGE followed by western blot with 14877-1-AP (DHODH antibody) at dilution of 1:8000 incubated at room temperature for 1.5 hours.



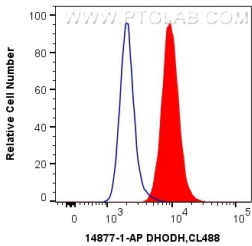
Immunohistochemical analysis of paraffin-embedded human breast cancer tissue slide using 14877-1-AP (DHODH antibody) at dilution of 1:200 (under 10x lens). Heat mediated antigen retrieval with Tris-EDTA buffer (pH 9.0).



Immunofluorescent analysis of (4% PFA) fixed mouse kidney tissue using DHODH antibody (14877-1-AP) at dilution of 1:200 and CoraLite®488-Conjugated Goat Anti-Rabbit IgG(H+L).



IP result of anti-DHODH (IP:14877-1-AP, 4ug; Detection:14877-1-AP 1:1000) with mouse spleen tissue lysate 4000ug.



1X10<sup>6</sup> HEK-293T cells were intracellularly stained with 0.2 ug Anti-Human DHODH (14877-1-AP) and CoraLite®488-Conjugated Goat Anti-Rabbit IgG(H+L) at dilution 1:1000 (red), or 0.2 ug Control Antibody. Cells were fixed with 4% PFA and permeabilized with Flow Cytometry Perm Buffer (PF00011-C).