

For Research Use Only

PCK1/2 Polyclonal antibody, PBS Only

Catalog Number:14892-1-PBS



Basic Information

Catalog Number: 14892-1-PBS	GenBank Accession Number: BC001454	Purification Method: Antigen affinity purification
Size: 100ug , Concentration: 1mg/ml by Nanodrop;	GeneID (NCBI): 5106	
Source: Rabbit	UNIPROT ID: Q16822	
Isotype: IgG	Full Name: phosphoenolpyruvate carboxykinase 2 (mitochondrial)	
Immunogen Catalog Number: AG6681	Calculated MW: 71 kDa	
	Observed MW: 66-71 kDa	

Applications

Tested Applications:
WB, IHC, IF/ICC, FC (Intra), ELISA

Species Specificity:
human, mouse, rat

Background Information

PCK2(phosphoenolpyruvate carboxykinase [GTP], mitochondrial) is also named as PEPCK2, PEPCK-M and belongs to the phosphoenolpyruvate carboxykinase [GTP] family. It catalyses the irreversible conversion of oxaloacetate to phosphoenolpyruvate, an important initial step in hepatic gluconeogenesis. Defects in PCK2 are the cause of mitochondrial phosphoenolpyruvate carboxykinase deficiency (M-PEPCKD). It has 2 isoforms produced by alternative splicing with the molecular weight of 71 kDa and 48 kDa. This antibody has weak cross-reactivity with PCK1 protein due to high sequence homology between PCK1 and PCK2.

Storage

Storage:
Store at -80°C.

Storage Buffer:
PBS only, pH7.3

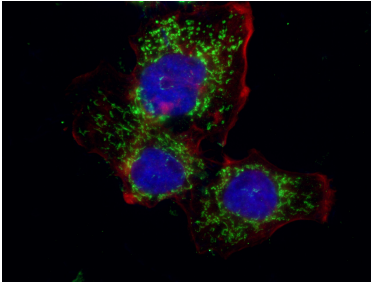
For technical support and original validation data for this product please contact:

T: 1 (888) 4PTGLAB (1-888-478-4522) (toll free in USA), or 1(312) 455-8498 (outside USA)

E: proteintech@ptglab.com
W: ptglab.com

This product is exclusively available under Proteintech Group brand and is not available to purchase from any other manufacturer.

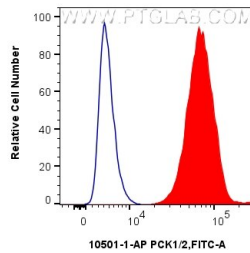
Selected Validation Data



Immunofluorescent analysis of (4% PFA) fixed MCF-7 cells using 14892-1-AP (PCK1/2 antibody), at dilution of 1:200 and CoraLite®488-Conjugated AffiniPure Goat Anti-Rabbit IgG(H+L). This data was developed using the same antibody clone with 14892-1-PBS in a different storage buffer formulation.



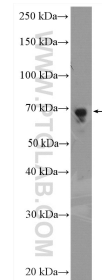
Immunohistochemical analysis of paraffin-embedded human breast cancer tissue slide using 14892-1-AP (PCK2 antibody) at dilution of 1:200 (under 40x lens. Heat mediated antigen retrieval with Tris-EDTA buffer (pH 9.0).



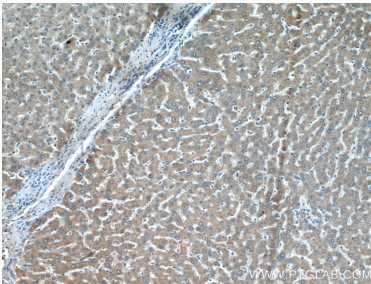
1×10^6 HepG2 cells were intracellularly stained with 0.25 ug PCK1/2 Polyclonal antibody (14892-1-AP) and CoraLite®488-Conjugated Goat Anti-Rabbit IgG(H+L) (SA00013-2)(red), or 0.25 ug Isotype Control (blue). Cells were fixed and permeabilized with Intracellular Flow Cytometry Fixation & Permeabilization Buffer Kit (PF00019). This data was developed using the same antibody clone with 14892-1-PBS in a different storage buffer formulation.



Immunohistochemical analysis of paraffin-embedded human breast cancer tissue slide using 14892-1-AP (PCK2 antibody) at dilution of 1:200 (under 10x lens. Heat mediated antigen retrieval with Tris-EDTA buffer (pH 9.0).



mouse liver tissue were subjected to SDS PAGE followed by western blot with 14892-1-AP (PCK1/2 antibody) at dilution of 1:600 incubated at room temperature for 1.5 hours. This data was developed using the same antibody clone with 14892-1-PBS in a different storage buffer formulation.



Immunohistochemical analysis of paraffin-embedded human liver cancer tissue slide using 14892-1-AP (PCK1/2 antibody) at dilution of 1:200 (under 10x lens). This data was developed using the same antibody clone with 14892-1-PBS in a different storage buffer formulation.