

For Research Use Only

RRP1 Polyclonal antibody

Catalog Number: 14896-1-AP

Featured Product



Basic Information

Catalog Number:

14896-1-AP

Size:

150ul , Concentration: 350 ug/ml by Nanodrop and 240 ug/ml by Bradford method using BSA as the standard;

Source:

Rabbit

Isotype:

IgG

Immunogen Catalog Number:

AG6686

GenBank Accession Number:

BC000380

GeneID (NCBI):

8568

UNIPROT ID:

P56182

Full Name:

ribosomal RNA processing 1 homolog (S. cerevisiae)

Calculated MW:

53 kDa

Observed MW:

53 kDa

Purification Method:

Antigen affinity purification

Recommended Dilutions:

WB 1:1000-1:4000

IF/ICC 1:20-1:200

Applications

Tested Applications:

WB, IF/ICC, ELISA

Species Specificity:

human

Positive Controls:

WB : HEK-293 cells, HeLa cells, human spleen tissue

IF/ICC : HeLa cells,

Storage

Storage:

Store at -20°C. Stable for one year after shipment.

Storage Buffer:

PBS with 0.02% sodium azide and 50% glycerol pH 7.3.

Aliquoting is unnecessary for -20°C storage

*** 20ul sizes contain 0.1% BSA

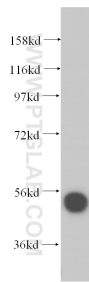
For technical support and original validation data for this product please contact:

T: 1 (888) 4PTGLAB (1-888-478-4522) (toll free in USA), or 1(312) 455-8498 (outside USA)

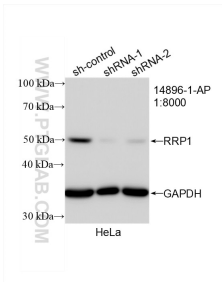
E: proteintech@ptglab.com
W: ptglab.com

This product is exclusively available under Proteintech Group brand and is not available to purchase from any other manufacturer.

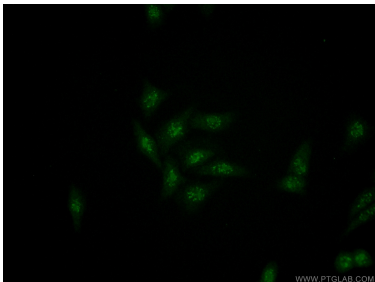
Selected Validation Data



HEK-293 cells were subjected to SDS PAGE followed by western blot with 14896-1-AP (RRP1 antibody) at dilution of 1:500 incubated at room temperature for 1.5 hours.



WB result of RRP1 antibody (14896-1-AP; 1:8000; incubated at room temperature for 1.5 hours) with sh-Control and sh-RRP1 transfected HeLa cells.



Immunofluorescent analysis of HeLa cells using 14896-1-AP (RRP1 antibody) at dilution of 1:50 and Alexa Fluor 488-conjugated Goat Anti-Rabbit IgG(H+L).