

For Research Use Only

NAP1L1 Polyclonal antibody

Catalog Number: 14898-1-AP

Featured Product

10 Publications



Basic Information

Catalog Number:

14898-1-AP

Size:

150ul, Concentration: 200 ug/ml by Nanodrop and 160 ug/ml by Bradford method using BSA as the standard;

Source:

Rabbit

Isotype:

IgG

Immunogen Catalog Number:

AG6690

GenBank Accession Number:

BC002387

GeneID (NCBI):

4673

UNIPROT ID:

P55209

Full Name:

nucleosome assembly protein 1-like 1

Calculated MW:

45 kDa

Observed MW:

55-60 kDa

Purification Method:

Antigen affinity purification

Recommended Dilutions:

WB 1:500-1:1000

IP 0.5-4.0 ug for 1.0-3.0 mg of total protein lysate

IHC 1:20-1:200

IF/ICC 1:200-1:800

Applications

Tested Applications:

WB, IHC, IF/ICC, FC (Intra), IP, ELISA

Cited Applications:

WB, IHC, IF

Species Specificity:

human, mouse, rat

Cited Species:

human, mouse

Note-IHC: suggested antigen retrieval with TE buffer pH 9.0; (*) Alternatively, antigen retrieval may be performed with citrate buffer pH 6.0

Positive Controls:

WB: Jurkat cells, HeLa cells, HT-1080 cells, A431 cells, HEK-293 cells, mouse thymus tissue, HL-60 cells

IP: HEK-293 cells,

IHC: human testis tissue, human brain tissue, human heart tissue, human kidney tissue, human lung tissue, human ovary tissue, human placenta tissue, human skin tissue, human spleen tissue

IF/ICC: HeLa cells, NIH/3T3 cells

Notable Publications

Author	Pubmed ID	Journal	Application
Shu Liu	34774047	Cancer Cell Int	WB, IHC, IF
Francisco Dominguez	34076483	J Virol	IF, WB
Ye-Wei Zhang	34368121	Front Cell Dev Biol	WB

Storage

Storage:

Store at -20°C. Stable for one year after shipment.

Storage Buffer:

PBS with 0.02% sodium azide and 50% glycerol pH 7.3.

Aliquoting is unnecessary for -20°C storage

*** 20ul sizes contain 0.1% BSA

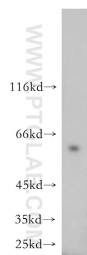
For technical support and original validation data for this product please contact:

T: 1 (888) 4PTGLAB (1-888-478-4522) (toll free in USA), or 1(312) 455-8498 (outside USA)

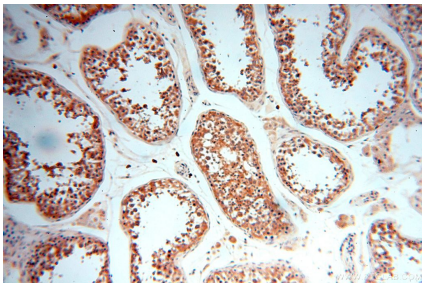
E: proteintech@ptglab.com
W: ptglab.com

This product is exclusively available under Proteintech Group brand and is not available to purchase from any other manufacturer.

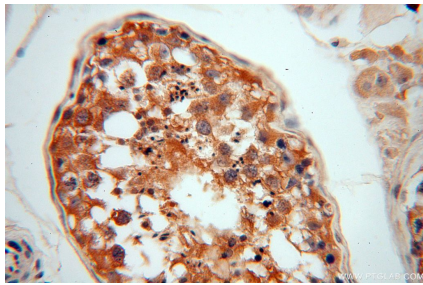
Selected Validation Data



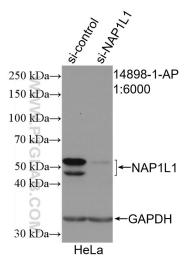
Jurkat cells were subjected to SDS PAGE followed by western blot with 14898-1-AP (NAP1L1 antibody) at dilution of 1:500 incubated at room temperature for 1.5 hours.



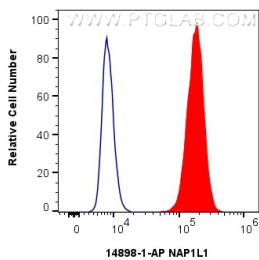
Immunohistochemical analysis of paraffin-embedded human testis using 14898-1-AP (NAP1L1 antibody) at dilution of 1:50 (under 10x lens).



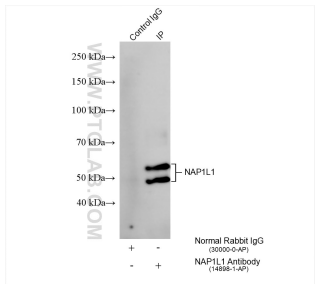
Immunohistochemical analysis of paraffin-embedded human testis using 14898-1-AP (NAP1L1 antibody) at dilution of 1:50 (under 40x lens).



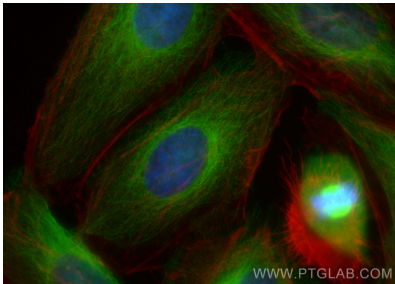
WB result of NAP1L1 antibody (14898-1-AP; 1:1000; incubated at room temperature for 1.5 hours) with sh-Control and sh-NAP1L1 transfected HeLa cells.



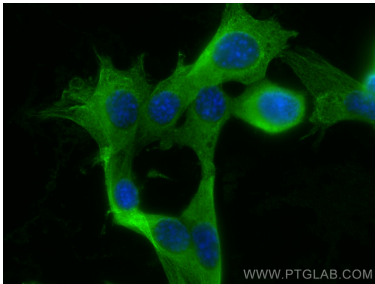
1x10⁶ NIH/3T3 cells were intracellularly stained with 0.25 ug NAP1L1 Polyclonal antibody (14898-1-AP) and CoraLite® 488-Conjugated Goat Anti-Rabbit IgG(H+L) (SA00013-2)(red), or 0.25 ug Rabbit IgG control Rabbit PolyAb (30000-0-AP) (blue). Cells were fixed with 4% PFA and permeabilized with Flow Cytometry Perm Buffer (PF00011-C).



IP result of anti-NAP1L1 (IP:14898-1-AP, 4ug; Detection:14898-1-AP 1:5000) with HEK-293 cells lysate 1440 ug.



Immunofluorescent analysis of (4% PFA) fixed HeLa cells using NAP1L1 antibody (14898-1-AP) at dilution of 1:400 and Multi-rAb CoraLite ® Plus 488-Goat Anti-Rabbit Recombinant Secondary Antibody (H+L) (RGAR002), CL594-phalloidin (red).



Immunofluorescent analysis of (4% PFA) fixed NIH/3T3 cells using NAP1L1 antibody (14898-1-AP) at dilution of 1:400 and Multi-rAb CoraLite ® Plus 488-Goat Anti-Rabbit Recombinant Secondary Antibody (H+L) (RGAR002).