

For Research Use Only

PSMD4 Polyclonal antibody

Catalog Number: 14899-1-AP

Featured Product

14 Publications



Basic Information

Catalog Number: 14899-1-AP	GenBank Accession Number: BC002365	Purification Method: Antigen affinity purification
Size: 150ul , Concentration: 500 ug/ml by Nanodrop;	GeneID (NCBI): 5710	Recommended Dilutions: WB 1:5000-1:50000
Source: Rabbit	UNIPROT ID: P55036	IHC 1:50-1:500 IF/ICC 1:50-1:500
Isotype: IgG	Full Name: proteasome (prosome, macropain) 26S subunit, non-ATPase, 4	
Immunogen Catalog Number: AG6691	Calculated MW: 41 kDa	
	Observed MW: 50 kDa	

Applications

Tested Applications:
WB, IHC, IF/ICC, FC (Intra), ELISA

Cited Applications:
WB, IHC, IF

Species Specificity:
human, mouse, rat

Cited Species:
human, mouse

Note-IHC: suggested antigen retrieval with TE buffer pH 9.0; (*) Alternatively, antigen retrieval may be performed with citrate buffer pH 6.0

Positive Controls:

WB: Jurkat cells, rat spleen tissue, K-562 cells, HeLa cells, NIH/3T3 cells, RAW264.7 cells, Raji cells

IHC: human lung cancer tissue, human testis tissue

IF/ICC: HepG2 cells,

Background Information

PSMD4, also named as MCB1, AF or ASF, belongs to the proteasome subunit S5A family. PSMD4 is a 50-kD subunit of the regulatory complex of the 26S proteasome. It binds and presumably selects ubiquitin-conjugates for destruction. PSMD4 displays selectivity for longer polyubiquitin chains. It modulates intestinal fluid secretion. PSMD4 is exposed on the sperm acrosomal surface, a notion that was further supported by the binding of non-cell permeant, biotinylated proteasomal inhibitor ZL3V5 to the sperm acrosome. It is involved in the sperm-ZP penetration during fertilization. (PMID: 20526895) This antibody is specific to PSMD4.

Notable Publications

Author	Pubmed ID	Journal	Application
Monica Benvenuto	34561494	Sci Rep	IHC
Rossella Avagliano Trezza	31235931	Nat Neurosci	WB,IF
Alison Sparks	35735670	FEBS Lett	WB

Storage

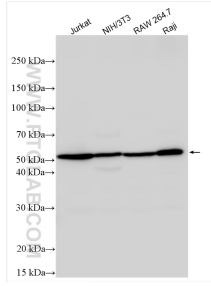
Storage:
Store at -20°C. Stable for one year after shipment.
Storage Buffer:
PBS with 0.02% sodium azide and 50% glycerol pH 7.3.
Aliquoting is unnecessary for -20°C storage

*** 20ul sizes contain 0.1% BSA

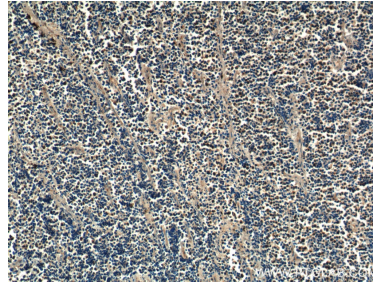
For technical support and original validation data for this product please contact:
T: 1 (888) 4PTGLAB (1-888-478-4522) (toll free in USA), or 1(312) 455-8498 (outside USA)
E: proteintech@ptglab.com
W: ptglab.com

This product is exclusively available under Proteintech Group brand and is not available to purchase from any other manufacturer.

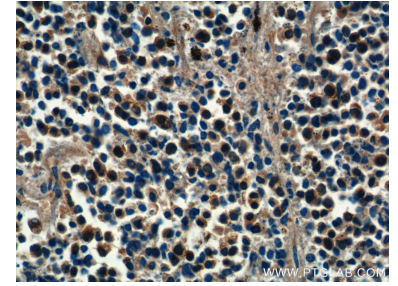
Selected Validation Data



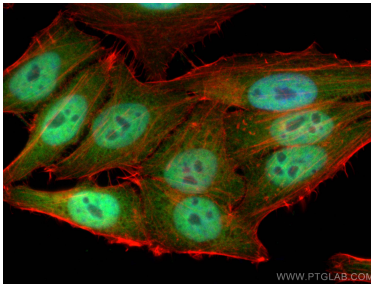
Various lysates were subjected to SDS PAGE followed by western blot with 14899-1-AP (PSMD4 antibody) at dilution of 1:10000 incubated at room temperature for 1.5 hours.



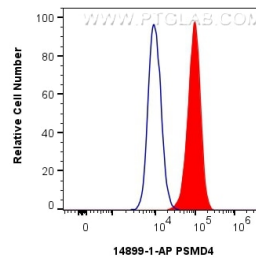
Immunohistochemical analysis of paraffin-embedded human lung cancer tissue slide using 14899-1-AP (PSMD4 Antibody) at dilution of 1:200 (under 10x lens).



Immunohistochemical analysis of paraffin-embedded human lung cancer tissue slide using 14899-1-AP (PSMD4 Antibody) at dilution of 1:200 (under 40x lens).



Immunofluorescent analysis of (4% PFA) fixed HepG2 cells using PSMD4 antibody (14899-1-AP) at dilution of 1:200 and Coralite@488-Conjugated AffiniPure Goat Anti-Rabbit IgG(H+L), CL594-phalloidin (red).



1x10⁶ HepG2 cells were intracellularly stained with 0.8 ug Anti-Human PSMD4 (14899-1-AP) and Coralite@488-Conjugated AffiniPure Goat Anti-Rabbit IgG(H+L) (SA00013-2)(red), or 0.8 ug Rabbit IgG control Rabbit PolyAb (30000-0-AP) (blue). Cells were fixed with 4% PFA and permeabilized with Flow Cytometry Perm Buffer (PF00011-C).