

For Research Use Only

HKR1 Polyclonal antibody

Catalog Number: 14902-1-AP



Basic Information

Catalog Number: 14902-1-AP	GenBank Accession Number: BC053845	Purification Method: Antigen affinity purification
Size: 150ul , Concentration: 500 ug/ml by Nanodrop and 333 ug/ml by Bradford method using BSA as the standard;	GeneID (NCBI): 284459	Recommended Dilutions: WB 1:200-1:1000
Source: Rabbit	UNIPROT ID: P10072	
Isotype: IgG	Full Name: GLI-Kruppel family member HKR1	
Immunogen Catalog Number: AG6694	Calculated MW: 73 kDa, 75 kDa	
	Observed MW: 70-75 kDa	

Applications

Tested Applications: WB, ELISA	Positive Controls: WB : COLO 320 cells, HEK-293 cells, HeLa cells
Species Specificity: human	

Background Information

HKR1, also named as ZNF875, belongs to the krueppel C2H2-type zinc-finger protein family. HKR1 is a modular protein that comprises a photosensory rhodopsin, a histidine kinase, a response regulator and a putative guanylyl cyclase domain. HKR1 is related to the protonation state of the Schiff base function that provides the linkage of the retinal chromophore with a Lys side chain of the protein (PMID: 25836735). HKR1 has 2 isoforms with the molecular mass of 73-75 kDa.

Storage

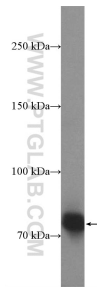
Storage:
Store at -20°C. Stable for one year after shipment.
Storage Buffer:
PBS with 0.02% sodium azide and 50% glycerol pH 7.3.
Aliquoting is unnecessary for -20°C storage

*** 20ul sizes contain 0.1%BSA

For technical support and original validation data for this product please contact:
T: 1 (888) 4PTGLAB (1-888-478-4522) (toll free in USA), or 1(312) 455-8498 (outside USA)
E: proteintech@ptglab.com
W: ptglab.com

This product is exclusively available under Proteintech Group brand and is not available to purchase from any other manufacturer.

Selected Validation Data



COLO 320 cells were subjected to SDS PAGE followed by western blot with 14902-1-AP (HKR1 Antibody) at dilution of 1:300 incubated at 4 degree celsius over night.