

For Research Use Only

PSMC2 Polyclonal antibody

Catalog Number: 14905-1-AP

Featured Product

12 Publications



Basic Information

Catalog Number:

14905-1-AP

Size:

150ul, Concentration: 600 ug/ml by Nanodrop and 233 ug/ml by Bradford method using BSA as the standard;

Source:

Rabbit

Isotype:

IgG

Immunogen Catalog Number:

AG6700

GenBank Accession Number:

BC002589

GeneID (NCBI):

5701

UNIPROT ID:

P35998

Full Name:

proteasome (prosome, macropain)

26S subunit, ATPase, 2

Calculated MW:

49 kDa

Observed MW:

49 kDa

Purification Method:

Antigen affinity purification

Recommended Dilutions:

WB 1:1000-1:4000

IP 0.5-4.0 ug for 1.0-3.0 mg of total

protein lysate

IHC 1:50-1:500

Applications

Tested Applications:

WB, IP, IHC, ELISA

Cited Applications:

WB, IHC, CoIP

Species Specificity:

human, mouse, rat

Cited Species:

human, mouse, rat

Note-IHC: suggested antigen retrieval with TE buffer pH 9.0; (*) Alternatively, antigen retrieval may be performed with citrate buffer pH 6.0

Positive Controls:

WB: mouse liver tissue, mouse spleen tissue, human adrenal gland tissue

IP: mouse spleen tissue,

IHC: human breast cancer tissue,

Background Information

PSMC2 is also named as MSS1 and belongs to the AAA ATPase family. PSMC2 is 1 of 6 putative ATPases contained within the regulatory complex. PSMC2 is first identified as a possible cellular factor that cooperates with the human immunodeficiency virus-1 (HIV-1) protein Tat, a potent activator of virus gene expression. The PSMC2 gene product works in association with the small subunit of mitoribosomes and seems to play some part in mitochondrial translation (PMID:8392589).

Notable Publications

Author	Pubmed ID	Journal	Application
Bin Zhou	33625534	Calcif Tissue Int	IHC, WB
Yushen Su	33732365	Oncol Lett	IHC
Kuixiang Chen	29435775	Cardiovasc Drugs Ther	WB

Storage

Storage:

Store at -20°C. Stable for one year after shipment.

Storage Buffer:

PBS with 0.02% sodium azide and 50% glycerol pH 7.3.

Aliquoting is unnecessary for -20°C storage

*** 20ul sizes contain 0.1% BSA

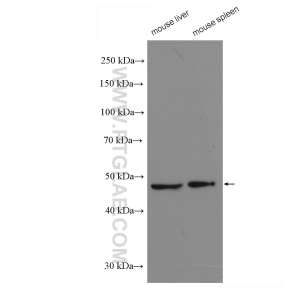
For technical support and original validation data for this product please contact:

T: 1 (888) 4PTGLAB (1-888-478-4522) (toll free in USA), or 1(312) 455-8498 (outside USA)

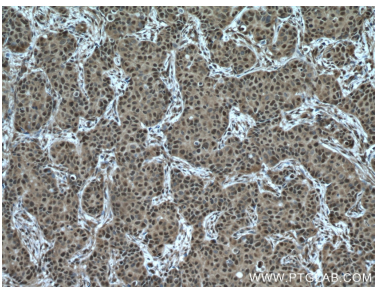
E: proteintech@ptglab.com
W: ptglab.com

This product is exclusively available under Proteintech Group brand and is not available to purchase from any other manufacturer.

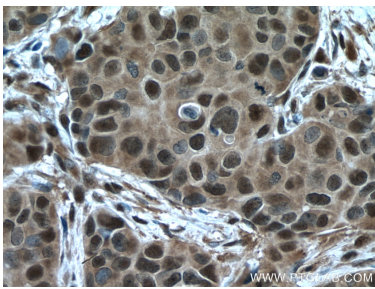
Selected Validation Data



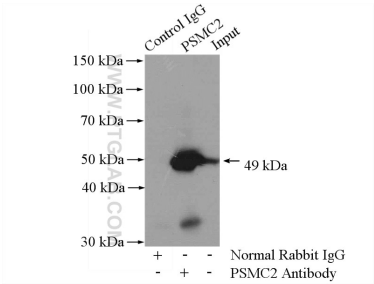
Various lysates were subjected to SDS PAGE followed by western blot with 14905-1-AP (PSMC2 antibody) at dilution of 1:2000 incubated at room temperature for 1.5 hours.



Immunohistochemical analysis of paraffin-embedded human breast cancer tissue slide using 14905-1-AP (PSMC2 antibody) at dilution of 1:200 (under 10x lens. Heat mediated antigen retrieval with Tris-EDTA buffer (pH 9.0).



Immunohistochemical analysis of paraffin-embedded human breast cancer tissue slide using 14905-1-AP (PSMC2 antibody) at dilution of 1:200 (under 40x lens. Heat mediated antigen retrieval with Tris-EDTA buffer (pH 9.0).



IP result of anti-PSMC2 (IP:14905-1-AP, 4ug; Detection:14905-1-AP 1:500) with mouse spleen tissue lysate 4800ug.