

For Research Use Only

PSME3 Polyclonal antibody

Catalog Number:14907-1-AP

Featured Product

9 Publications



Basic Information

Catalog Number:

14907-1-AP

Size:

150ul , Concentration: 450 ug/ml by Nanodrop;

Source:

Rabbit

Isotype:

IgG

Immunogen Catalog Number:

AG6702

GenBank Accession Number:

BC001423

GeneID (NCBI):

10197

UNIPROT ID:

P61289

Full Name:

proteasome (prosome, macropain) activator subunit 3 (PA28 gamma; Ki)

Calculated MW:

30 kDa

Observed MW:

30 kDa

Purification Method:

Antigen affinity purification

Recommended Dilutions:

WB 1:1000-1:4000

IP 0.5-4.0 ug for 1.0-3.0 mg of total protein lysate

IHC 1:50-1:500

IF/ICC 1:10-1:100

Applications

Tested Applications:

WB, IHC, IF/ICC, IP, ELISA

Cited Applications:

WB, IHC, IF

Species Specificity:

human, mouse, rat

Cited Species:

human, mouse

Positive Controls:

WB : COLO 320 cells, mouse spleen tissue, HepG2 cells, Caco-2 cells, HCT 116 cells

IP : COLO 320 cells,

IHC : human kidney tissue,

IF/ICC : HepG2 cells,

Note-IHC: suggested antigen retrieval with TE buffer pH 9.0; (*) Alternatively, antigen retrieval may be performed with citrate buffer pH 6.0

Background Information

PSME3 gene encodes proteasome activator complex subunit 3, which is also called REG-gamma or PA28-gamma. REG-gamma activates the trypsin-like catalytic subunit of the proteasome thus is a proteasome regulator. MDM2-TP53 interaction which promotes ubiquitination- and MDM2-dependent proteasomal degradation of TP53, may be promoted by REG-gamma resulting in inhibited apoptosis after DNA damage. REG-gamma may also be involved in cell cycle regulation.

Notable Publications

Author	Pubmed ID	Journal	Application
Jiefang Guo	27756569	Cancer Lett	WB,IHC
Zhen Yu	35344764	EBioMedicine	IHC
Doueiri Rami R	22876852	Retrovirology	WB

Storage

Storage:

Store at -20°C. Stable for one year after shipment.

Storage Buffer:

PBS with 0.02% sodium azide and 50% glycerol pH 7.3.

Aliquoting is unnecessary for -20°C storage

*** 20ul sizes contain 0.1% BSA

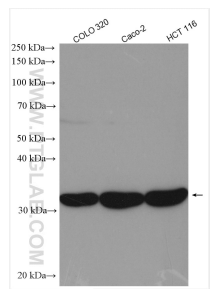
For technical support and original validation data for this product please contact:

T: 1 (888) 4PTGLAB (1-888-478-4522) (toll free in USA), or 1(312) 455-8498 (outside USA)

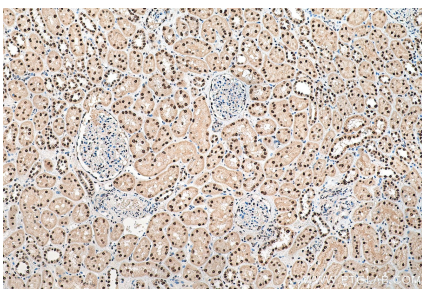
E: proteintech@ptglab.com
W: ptglab.com

This product is exclusively available under Proteintech Group brand and is not available to purchase from any other manufacturer.

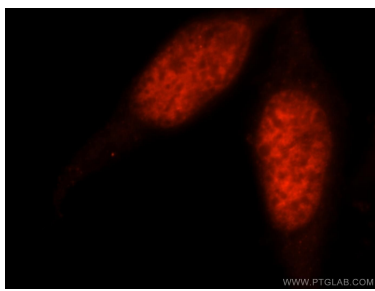
Selected Validation Data



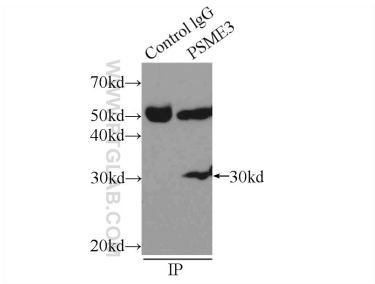
COLO 320 cells were subjected to SDS PAGE followed by western blot with 14907-1-AP (PSME3 antibody) at dilution of 1:2000 incubated at room temperature for 1.5 hours.



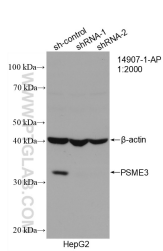
Immunohistochemical analysis of paraffin-embedded human kidney tissue slide using 14907-1-AP (PSME3 antibody) at dilution of 1:200 (under 10x lens). Heat mediated antigen retrieval with Tris-EDTA buffer (pH 9.0).



Immunofluorescent analysis of HepG2 cells, using PSME3 antibody 14907-1-AP at 1:25 dilution and Rhodamine-labeled goat anti-rabbit IgG (red).



IP result of anti-PSME3 (IP:14907-1-AP, 3ug; Detection:14907-1-AP 1:500) with COLO 320 cells lysate 2000ug.



WB result of PSME3 antibody (14907-1-AP; 1:2000; incubated at room temperature for 1.5 hours) with sh-Control and sh-PSME3 transfected HepG2 cells.