

For Research Use Only

# RPS26 Polyclonal antibody

Catalog Number: 14909-1-AP

Featured Product

13 Publications



## Basic Information

### Catalog Number:

14909-1-AP

### Size:

150ul, Concentration: 300 ug/ml by Nanodrop;

### Source:

Rabbit

### Isotype:

IgG

### Immunogen Catalog Number:

AG6706

### GenBank Accession Number:

BC002604

### GeneID (NCBI):

6231

### UNIPROT ID:

P62854

### Full Name:

ribosomal protein S26

### Calculated MW:

13 kDa

### Observed MW:

18-21 kDa

### Purification Method:

Antigen affinity purification

### Recommended Dilutions:

WB 1:500-1:2000

IP 0.5-4.0 ug for 1.0-3.0 mg of total protein lysate

IHC 1:20-1:200

IF/ICC 1:20-1:200

## Applications

### Tested Applications:

WB, IHC, IF/ICC, IP, ELISA

### Cited Applications:

WB, IHC, IP, PLA

### Species Specificity:

human, mouse, rat

### Cited Species:

human, mouse

**Note-IHC: suggested antigen retrieval with TE buffer pH 9.0; (\*) Alternatively, antigen retrieval may be performed with citrate buffer pH 6.0**

### Positive Controls:

WB : mouse ovary tissue, mouse lung tissue

IP : mouse lung tissue,

IHC : human breast cancer tissue, human kidney tissue

IF/ICC : MCF-7 cells,

## Background Information

Diamond-Blackfan anemia (DBA) is a congenital red cell aplasia that is usually diagnosed during early infancy, and strikingly, in addition to defects in red cell maturation the disorder is associated with various physical anomalies in about 40% of patients. To date, heterozygous mutations in nine RP genes have been conclusively associated with DBA, and RPS26 is one of them. There are nine mutation found in RPS26 from DBA patients.

## Notable Publications

Author	Pubmed ID	Journal	Application
Max Koppers	31746735	Elife	WB, PLA
Xiao-Man Liu	30451825	Cell Death Dis	WB
Yanqin Yu	28232668	Nat Commun	

## Storage

### Storage:

Store at -20°C. Stable for one year after shipment.

### Storage Buffer:

PBS with 0.02% sodium azide and 50% glycerol, pH7.3

Aliquoting is unnecessary for -20°C storage

\*\*\* 20ul sizes contain 0.1% BSA

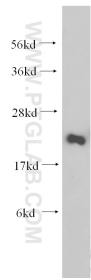
For technical support and original validation data for this product please contact:

T: 1 (888) 4PTGLAB (1-888-478-4522) (toll free in USA), or 1(312) 455-8498 (outside USA)

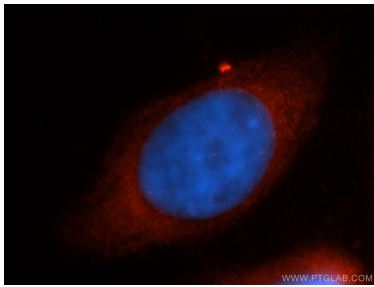
E: [proteintech@ptglab.com](mailto:proteintech@ptglab.com)  
W: [ptglab.com](http://ptglab.com)

This product is exclusively available under Proteintech Group brand and is not available to purchase from any other manufacturer.

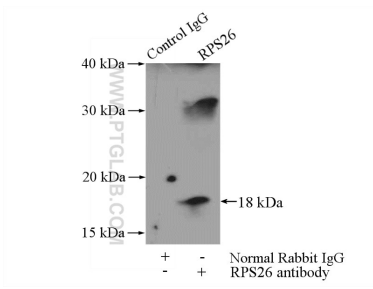
Selected Validation Data



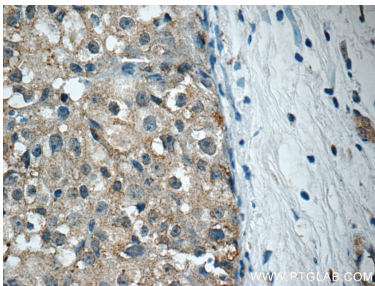
mouse ovary tissue were subjected to SDS PAGE followed by western blot with 14909-1-AP (RPS26 antibody) at dilution of 1:200 incubated at room temperature for 1.5 hours.



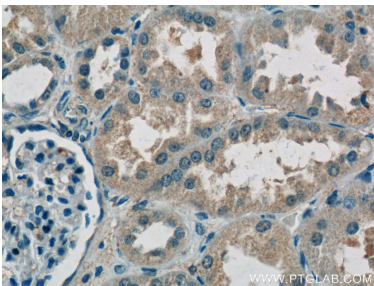
Immunofluorescent analysis of MCF-7 cells, using RPS26 antibody 14909-1-AP at 1:50 dilution and Rhodamine-labeled goat anti-rabbit IgG (red). Blue pseudocolor = DAPI (fluorescent DNA dye).



IP result of anti-RPS26 (IP:14909-1-AP, 4ug; Detection:14909-1-AP 1:500) with mouse lung tissue lysate 4000ug.



Immunohistochemical analysis of paraffin-embedded human breast cancer tissue slide using 14909-1-AP (RPS26 Antibody) at dilution of 1:50 (under 40x lens).



Immunohistochemical analysis of paraffin-embedded human kidney tissue slide using 14909-1-AP (RPS26 Antibody) at dilution of 1:50 (under 40x lens).