

For Research Use Only

TOB1 Polyclonal antibody

Catalog Number:14915-1-AP

Featured Product

10 Publications



Basic Information

Catalog Number:

14915-1-AP

Size:

150ul , Concentration: 600 ug/ml by Nanodrop and 367 ug/ml by Bradford method using BSA as the standard;

Source:

Rabbit

Isotype:

IgG

Immunogen Catalog Number:

AG6714

GenBank Accession Number:

BC031406

GeneID (NCBI):

10140

UNIPROT ID:

P50616

Full Name:

transducer of ERBB2, 1

Calculated MW:

38 kDa

Observed MW:

38-45 kDa

Purification Method:

Antigen affinity purification

Recommended Dilutions:

WB 1:500-1:1000

IP 0.5-4.0 ug for 1.0-3.0 mg of total protein lysate

IHC 1:50-1:500

Applications

Tested Applications:

WB, IHC, IP, ELISA

Cited Applications:

WB, IHC, IF, IP

Species Specificity:

human, mouse, rat

Cited Species:

human, mouse, pig

Positive Controls:

WB : HeLa cells,

IP : HeLa cells,

IHC : human stomach cancer tissue,

Note-IHC: suggested antigen retrieval with TE buffer pH 9.0; (*) Alternatively, antigen retrieval may be performed with citrate buffer pH 6.0

Background Information

TOB1, also known as APRO6 or TROB1, is a member of the transducer of erbB-2/B-cell translocation gene protein family. Members of this family are anti-proliferative factors that have the potential to regulate cell growth. The TOB1 protein has a large additional C-terminal region, which contains PAM2 motifs that mediate interactions with poly(A)-binding proteins. It is mainly located in the cell nucleus and will transfer between the cell nucleus and the cytoplasm. The more phosphorylation, the more obvious the cytoplasmic localization. The predicted MW of this protein is 38 kDa. Catalog# 14915-1-AP recognises 38 and 45 kDa band, and the additional 45 kDa band may be due to phosphorylation.

Notable Publications

Author	Pubmed ID	Journal	Application
Fabian Poetz	36096941	Genome Biol	WB
Zhongxia Yu	36085336	Commun Biol	WB,IF,IP
Jin Zhu	26540468	Oncotarget	WB

Storage

Storage:

Store at -20°C. Stable for one year after shipment.

Storage Buffer:

PBS with 0.02% sodium azide and 50% glycerol pH 7.3.

Aliquoting is unnecessary for -20°C storage

*** 20ul sizes contain 0.1% BSA

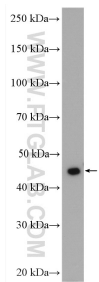
For technical support and original validation data for this product please contact:

T: 1 (888) 4PTGLAB (1-888-478-4522) (toll free in USA), or 1(312) 455-8498 (outside USA)

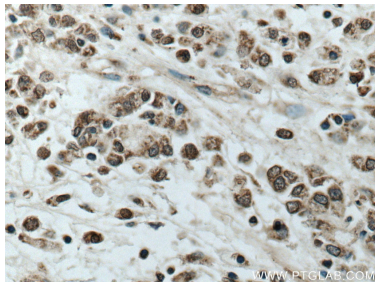
E: proteintech@ptglab.com
W: ptglab.com

This product is exclusively available under Proteintech Group brand and is not available to purchase from any other manufacturer.

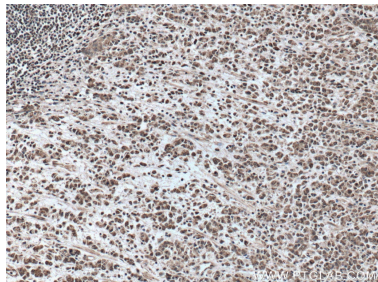
Selected Validation Data



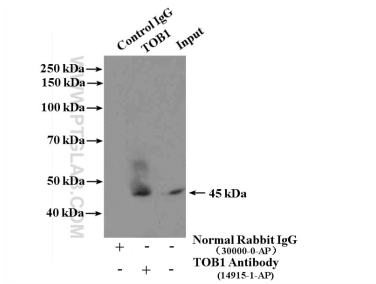
HeLa cells were subjected to SDS PAGE followed by western blot with 14915-1-AP (TOB1 antibody) at dilution of 1:500 incubated at room temperature for 1.5 hours.



Immunohistochemical analysis of paraffin-embedded human stomach cancer tissue slide using 14915-1-AP (TOB1 antibody) at dilution of 1:100 (under 0x lens. Heat mediated antigen retrieval with Tris-EDTA buffer (pH 9.0).



Immunohistochemical analysis of paraffin-embedded human stomach cancer tissue slide using 14915-1-AP (TOB1 antibody) at dilution of 1:100 (under 0x lens. Heat mediated antigen retrieval with Tris-EDTA buffer (pH 9.0).



IP result of anti-TOB1 (IP:14915-1-AP, 4ug; Detection:14915-1-AP 1:1000) with HeLa cells lysate 1600ug.