

For Research Use Only

MEPCE Polyclonal antibody

Catalog Number: 14917-1-AP

Featured Product

8 Publications



Basic Information

Catalog Number:
14917-1-AP

Size:
150ul, Concentration: 850 µg/ml by Nanodrop and 667 µg/ml by Bradford method using BSA as the standard;

Source:
Rabbit

Isotype:
IgG

Immunogen Catalog Number:
AG6733

GenBank Accession Number:
BC000556

GeneID (NCBI):
56257

Full Name:
methylphosphate capping enzyme

Calculated MW:
74 kDa

Observed MW:
74 kDa

Purification Method:
Antigen affinity purification

Recommended Dilutions:
WB 1:1000-1:4000
IP 0.5-4.0 µg for 1.0-3.0 mg of total protein lysate
IF 1:20-1:200

Applications

Tested Applications:
IF, IP, WB, ELISA

Cited Applications:
IP, WB

Species Specificity:
human

Cited Species:
human

Positive Controls:

WB: MCF7 cells, MCF-7 cells

IP: MCF-7 cells,

IF: MCF-7 cells,

Background Information

MEPCE is a component of the 7SK snRNP complex, and a S-adenosyl-L-methionine-dependent methyltransferase that adds a methylphosphate cap at the 5'-end of 7SK snRNA, which leads to its stabilization.

Notable Publications

Author	Pubmed ID	Journal	Application
Nur Firdaus Isa	34696162	Vaccines (Basel)	WB
Ahmed S Warda	29051200	EMBO Rep	WB
Taketoshi Mizutani	24607481	FEBS Lett	WB

Storage

Storage:

Store at -20°C. Stable for one year after shipment.

Storage Buffer:

PBS with 0.02% sodium azide and 50% glycerol pH 7.3.

Aliquoting is unnecessary for -20°C storage

*** 20ul sizes contain 0.1% BSA

For technical support and original validation data for this product please contact:

T: 1 (888) 4PTGLAB (1-888-478-4522) (toll free in USA), or 1(312) 455-8498 (outside USA)

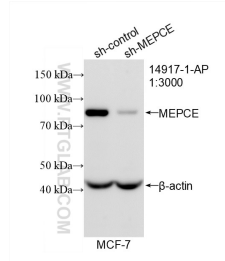
E: proteintech@ptglab.com
W: ptglab.com

This product is exclusively available under Proteintech Group brand and is not available to purchase from any other manufacturer.

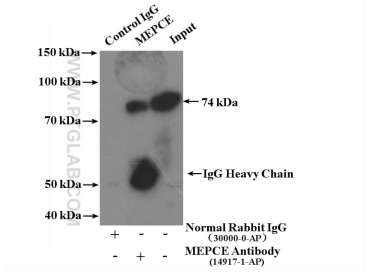
Selected Validation Data



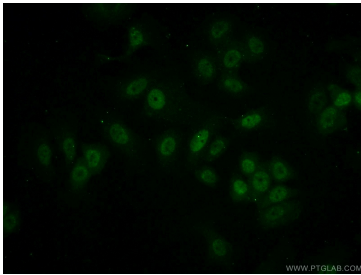
MCF7 cells were subjected to SDS PAGE followed by western blot with 14917-1-AP (MEPCE antibody) at dilution of 1:2000 incubated at room temperature for 1.5 hours.



WB result of MEPCE antibody (14917-1-AP; 1:3000; incubated at room temperature for 1.5 hours) with sh-Control and sh-MEPCE transfected MCF-7 cells.



IP Result of anti-MEPCE (IP:14917-1-AP, 4ug; Detection:14917-1-AP 1:400) with MCF-7 cells lysate 3200ug.



Immunofluorescent analysis of (-20°C Ethanol) fixed MCF-7 cells using 14917-1-AP (MEPCE antibody) at dilution of 1:50 and Alexa Fluor 488-conjugated AffiniPure Goat Anti-Rabbit IgG(H+L).