

For Research Use Only

# THUMPD1 Polyclonal antibody, PBS Only

Catalog Number: 14921-1-PBS



## Basic Information

<b>Catalog Number:</b> 14921-1-PBS	<b>GenBank Accession Number:</b> BC000448	<b>Purification Method:</b> Antigen affinity purification
<b>Size:</b> 100ug , Concentration: 1 mg/ml by Nanodrop;	<b>GeneID (NCBI):</b> 55623	
<b>Source:</b> Rabbit	<b>UNIPROT ID:</b> Q9NXG2	
<b>Isotype:</b> IgG	<b>Full Name:</b> THUMP domain containing 1	
<b>Immunogen Catalog Number:</b> AG6739	<b>Calculated MW:</b> 39 kDa	
	<b>Observed MW:</b> 49 kDa	

## Applications

**Tested Applications:**  
WB, IHC, IF/ICC, Indirect ELISA

**Species Specificity:**  
human, mouse, rat

## Background Information

THUMPD1, a THUMP domain-containing RNA-binding protein, partners with NAT10 to mediate N4-acetylcytidine (ac4C) modification, enhancing RNA stability, export, and translation. Dysregulated THUMPD1 promotes proliferation, migration, invasion, and EMT.

## Storage

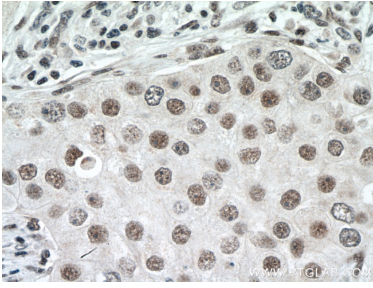
**Storage:**  
Store at -80°C.

**Storage Buffer:**  
PBS only, pH7.3

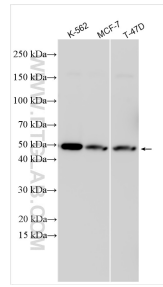
For technical support and original validation data for this product please contact:  
T: 1 (888) 4PTGLAB (1-888-478-4522) (toll free in USA), or 1(312) 455-8498 (outside USA)      E: proteintech@ptglab.com  
W: ptglab.com

This product is exclusively available under Proteintech Group brand and is not available to purchase from any other manufacturer.

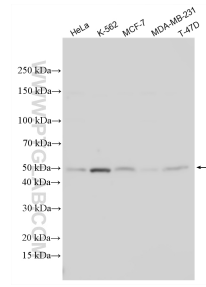
## Selected Validation Data



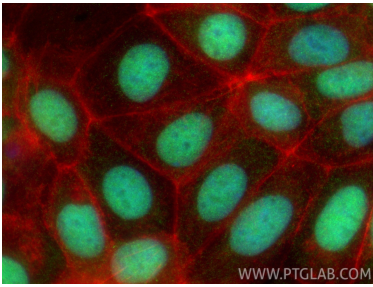
Immunohistochemical analysis of paraffin-embedded human breast cancer tissue slide using 14921-1-AP (THUMPD1 antibody) at dilution of 1:200 (under 40x lens. Heat mediated antigen retrieval with Tris-EDTA buffer (pH 9.0). This data was developed using the same antibody clone with 14921-1-PBS in a different storage buffer formulation.



Various lysates were subjected to SDS PAGE followed by western blot with 14921-1-AP (THUMPD1 antibody) at dilution of 1:10000 incubated at room temperature for 1.5 hours. This data was developed using the same antibody clone with 14921-1-PBS in a different storage buffer formulation.



Various lysates were subjected to SDS PAGE followed by western blot with 14921-1-AP (THUMPD1 antibody) at dilution of 1:30000 incubated at room temperature for 1.5 hours. This data was developed using the same antibody clone with 14921-1-PBS in a different storage buffer formulation.



Immunofluorescent analysis of (4% PFA) fixed MCF-7 cells using THUMPD1 antibody (14921-1-AP) at dilution of 1:1000 and CoraLite®488-Conjugated Goat Anti-Rabbit IgG(H+L) (SA00013-2), CL594-Phalloidin (red). This data was developed using the same antibody clone with 14921-1-PBS in a different storage buffer formulation.