

For Research Use Only

SUCLG1 Polyclonal antibody

Catalog Number: 14923-1-AP **3 Publications**



Basic Information

Catalog Number: 14923-1-AP	GenBank Accession Number: BC000504	Purification Method: Antigen affinity purification
Size: 150ul , Concentration: 350 µg/ml by Nanodrop and 167 µg/ml by Bradford method using BSA as the standard;	GeneID (NCBI): 8802	Recommended Dilutions: WB 1:500-1:1000 IP 0.5-4.0 ug for IP and 1:500-1:1000 for WB
Source: Rabbit	Full Name: succinate-CoA ligase, alpha subunit	Calculated MW: 35 kDa
Isotype: IgG	Observed MW: 35 kDa	IHC 1:20-1:200
Immunogen Catalog Number: AG6481		

Applications

Tested Applications: IHC, IP, WB, ELISA	Positive Controls: WB : mouse kidney tissue, rat liver tissue
Cited Applications: IP, WB	IP : mouse kidney tissue,
Species Specificity: human, mouse, rat	IHC : human liver cancer tissue,
Cited Species: human, mouse	
Note-IHC: suggested antigen retrieval with TE buffer pH 9.0; (*) Alternatively, antigen retrieval may be performed with citrate buffer pH 6.0	

Background Information

SUCLG1(succinyl-CoA ligase [ADP/GDP-forming] subunit alpha, mitochondrial) is also named as SCS-alpha and belongs to the succinate/malate CoA ligase alpha subunit family. The SUCLG1 gene encodes a 35 kDa protein with a 40 amino acids transit peptide. This enzyme catalyzes the ATP- or GTP-dependent ligation of succinate and CoA to form succinyl-CoA. Defects in SUCLG1 are the cause of mitochondrial DNA depletion syndrome type 9 (MTDPS9).

Notable Publications

Author	Pubmed ID	Journal	Application
Sophie Trefely	34856123	Mol Cell	WB
Xin Liu	34998831	J Mol Cell Cardiol	WB,IP
Xinxin Zuo	33398173	Nat Struct Mol Biol	WB

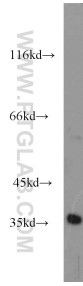
Storage

Storage:
Store at -20°C. Stable for one year after shipment.
Storage Buffer:
PBS with 0.02% sodium azide and 50% glycerol pH 7.3.
Aliquoting is unnecessary for -20°C storage

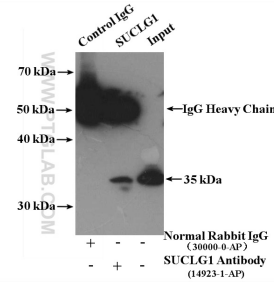
For technical support and original validation data for this product please contact:
T: 1 (888) 4PTGLAB (1-888-478-4522) (toll free in USA), or 1(312) 455-8498 (outside USA) E: proteintech@ptglab.com W: ptglab.com

This product is exclusively available under Proteintech Group brand and is not available to purchase from any other manufacturer.

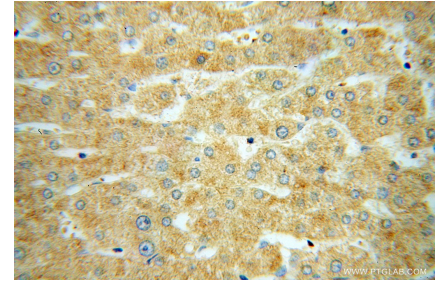
Selected Validation Data



mouse kidney tissue were subjected to SDS PAGE followed by western blot with 14923-1-AP (SUCLG1 antibody) at dilution of 1:500 incubated at room temperature for 1.5 hours.



IP result of anti-SUCLG1 (IP:14923-1-AP, 4ug; Detection:14923-1-AP 1:500) with mouse kidney tissue lysate 2800 ug.



Immunohistochemical analysis of paraffin-embedded human liver cancer using 14923-1-AP (SUCLG1 antibody) at dilution of 1:100 (under 40x lens).