

For Research Use Only

TIM22 Polyclonal antibody

Catalog Number: 14927-1-AP

Featured Product

28 Publications



Basic Information

Catalog Number:

14927-1-AP

Size:

150ul, Concentration: 650 µg/ml by Nanodrop;

Source:

Rabbit

Isotype:

IgG

Immunogen Catalog Number:

AG6689

GenBank Accession Number:

BC002324

GeneID (NCBI):

29928

UNIPROT ID:

Q9Y584

Full Name:

translocase of inner mitochondrial membrane 22 homolog (yeast)

Calculated MW:

20 kDa

Observed MW:

20 kDa

Purification Method:

Antigen affinity purification

Recommended Dilutions:

WB 1:1000-1:8000

IP 0.5-4.0 µg for 1.0-3.0 mg of total protein lysate

IHC 1:50-1:500

Applications

Tested Applications:

WB, IP, IHC, ELISA

Cited Applications:

WB

Species Specificity:

human, mouse, rat

Cited Species:

human, mouse

Note-IHC: suggested antigen retrieval with TE buffer pH 9.0; (*) Alternatively, antigen retrieval may be performed with citrate buffer pH 6.0

Positive Controls:

WB : HepG2 cells, MCF-7 cells, mouse liver tissue, rat liver tissue

IP : mouse liver tissue,

IHC : human liver tissue,

Background Information

TIM22 is a translocase localized in mitochondrial inner membrane. It is implicated in import of nuclear-encoded mitochondrial preproteins to the mitochondria. TIM22 is the essential core of protein insertion complex (TIM22 complex) that consists of TIM22, TIM54, TIM18, and TIM12.

Notable Publications

Author	Pubmed ID	Journal	Application
Paula Clemente	36180430	Nat Commun	WB
Shrijal S Shah	31558683	J Am Soc Nephrol	WB
Anusha Valpadashi	33125709	FEBS Lett	WB

Storage

Storage:

Store at -20°C. Stable for one year after shipment.

Storage Buffer:

PBS with 0.02% sodium azide and 50% glycerol pH 7.3.

Aliquoting is unnecessary for -20°C storage

*** 20ul sizes contain 0.1% BSA

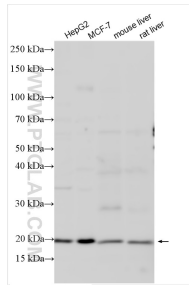
For technical support and original validation data for this product please contact:

T: 1 (888) 4PTGLAB (1-888-478-4522) (toll free in USA), or 1(312) 455-8498 (outside USA)

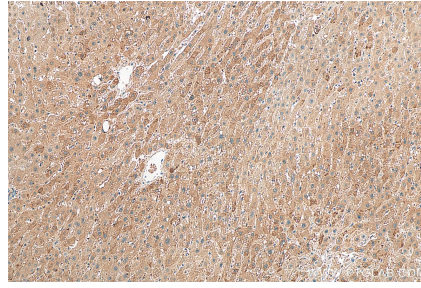
E: proteintech@ptglab.com
W: ptglab.com

This product is exclusively available under Proteintech Group brand and is not available to purchase from any other manufacturer.

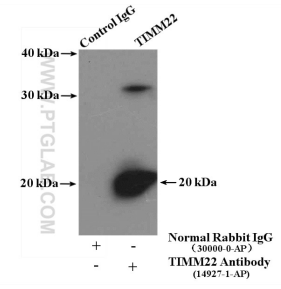
Selected Validation Data



Various lysates were subjected to SDS PAGE followed by western blot with 14927-1-AP (TIM22 antibody) at dilution of 1:4000 incubated at room temperature for 1.5 hours.



Immunohistochemical analysis of paraffin-embedded human liver tissue slide using 14927-1-AP (TIM22 antibody) at dilution of 1:200 (under 10x lens). Heat mediated antigen retrieval with Tris-EDTA buffer (pH 9.0).



IP result of anti-TIM22 (IP:14927-1-AP, 4ug; Detection:14927-1-AP 1:1.000) with mouse liver tissue lysate 4000ug.