

For Research Use Only

GCDH Polyclonal antibody

Catalog Number: 14930-1-AP

4 Publications



Basic Information

Catalog Number:

14930-1-AP

Size:

150ul, Concentration: 400 ug/ml by Nanodrop;

Source:

Rabbit

Isotype:

IgG

Immunogen Catalog Number:

AG6713

GenBank Accession Number:

BC002579

GeneID (NCBI):

2639

UNIPROT ID:

Q92947

Full Name:

glutaryl-Coenzyme A dehydrogenase

Calculated MW:

48 kDa

Observed MW:

44-48 kDa

Purification Method:

Antigen affinity purification

Recommended Dilutions:

WB 1:500-1:3000

IHC 1:50-1:500

Applications

Tested Applications:

WB, IHC, ELISA

Cited Applications:

WB

Species Specificity:

human

Cited Species:

human, rat, mouse

Positive Controls:

WB : HepG2 cells, SH-SY5Y cells

IHC : human liver tissue,

Note-IHC: suggested antigen retrieval with TE buffer pH 9.0; (*) Alternatively, antigen retrieval may be performed with citrate buffer pH 6.0

Background Information

GCDH is a nuclear-encoded mitochondrial protein involved in the catabolic pathway of tryptophan, lysine and hydroxylysine. The functional enzyme is a homotetramer of 43.3 kDa subunits that resides in the mitochondrial matrix. GCDH activity reduction leads to predominant accumulation of glutaric (GA) and 3- hydroxyglutaric (3HGA) acids in tissues, mostly brain, and biological fluids of affected patients. GCDH is widely expressed and has the highest levels in liver and kidney, which is consistent with its role in amino acid oxidation. (PMID: 27984186, 33001399)

Notable Publications

Author	Pubmed ID	Journal	Application
Gao Jinzhi J	23658800	PLoS One	WB
Curtis C Hughey	30850319	Mol Metab	WB
Aoao Wang	36618918	Front Pharmacol	WB

Storage

Storage:

Store at -20°C. Stable for one year after shipment.

Storage Buffer:

PBS with 0.02% sodium azide and 50% glycerol pH 7.3.

Aliquoting is unnecessary for -20°C storage

*** 20ul sizes contain 0.1% BSA

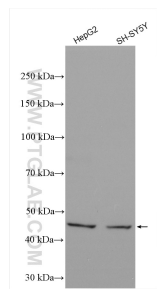
For technical support and original validation data for this product please contact:

T: 1 (888) 4PTGLAB (1-888-478-4522) (toll free in USA), or 1(312) 455-8498 (outside USA)

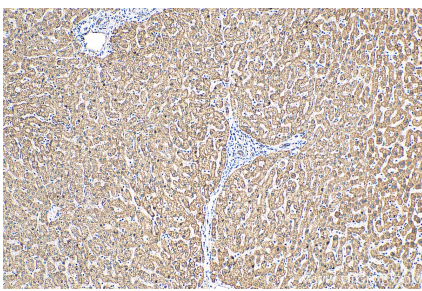
E: proteintech@ptglab.com
W: ptglab.com

This product is exclusively available under Proteintech Group brand and is not available to purchase from any other manufacturer.

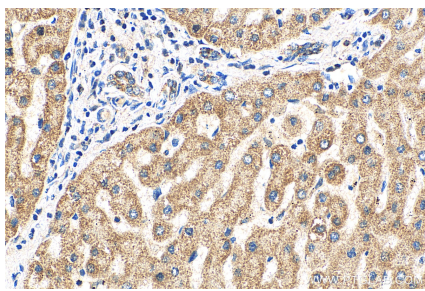
Selected Validation Data



Various lysates were subjected to SDS PAGE followed by western blot with 14930-1-AP (GCDH antibody) at dilution of 1:1500 incubated at room temperature for 1.5 hours.



Immunohistochemical analysis of paraffin-embedded human liver tissue slide using 14930-1-AP (GCDH antibody) at dilution of 1:200 (under 10x lens). Heat mediated antigen retrieval with Tris-EDTA buffer (pH 9.0).



Immunohistochemical analysis of paraffin-embedded human liver tissue slide using 14930-1-AP (GCDH antibody) at dilution of 1:200 (under 40x lens). Heat mediated antigen retrieval with Tris-EDTA buffer (pH 9.0).