

For Research Use Only

MECR Polyclonal antibody

Catalog Number: 14932-1-AP **1 Publications**



Basic Information

Catalog Number: 14932-1-AP	GenBank Accession Number: BC001419	Purification Method: Antigen affinity purification
Size: 150ul , Concentration: 450 µg/ml by Nanodrop and 220 µg/ml by Bradford method using BSA as the standard;	GeneID (NCBI): 51102	Recommended Dilutions: WB 1:500-1:2400 IHC 1:50-1:500 IF 1:50-1:500
Source: Rabbit	Full Name: mitochondrial trans-2-enoyl-CoA reductase	
Isotype: IgG	Calculated MW: 40 kDa	
Immunogen Catalog Number: AG6738	Observed MW: 37 kDa	

Applications

Tested Applications: IF, IHC, WB, ELISA	Positive Controls: WB : mouse heart tissue, human stomach tissue
Cited Applications: WB	IHC : human heart tissue,
Species Specificity: human, mouse, rat	IF : C2C12 cells, LNCaP cells
Cited Species: human, mouse, pig	

Note-IHC: suggested antigen retrieval with TE buffer pH 9.0; (*) Alternatively, antigen retrieval may be performed with citrate buffer pH 6.0

Background Information

Notable Publications

Author	Pubmed ID	Journal	Application
Steven F Baker	36542656	PLoS Biol	WB

Storage

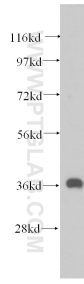
Storage:
Store at -20°C. Stable for one year after shipment.
Storage Buffer:
PBS with 0.02% sodium azide and 50% glycerol pH 7.3.
Aliquoting is unnecessary for -20°C storage

*** 20ul sizes contain 0.1% BSA

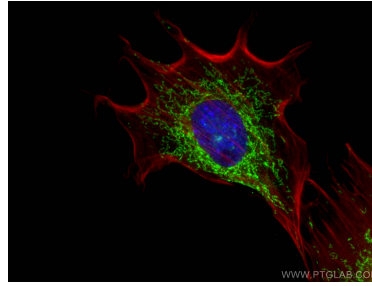
For technical support and original validation data for this product please contact:
T: 1 (888) 4PTGLAB (1-888-478-4522) (toll free in USA), or 1(312) 455-8498 (outside USA)
E: proteintech@ptglab.com
W: ptglab.com

This product is exclusively available under Proteintech Group brand and is not available to purchase from any other manufacturer.

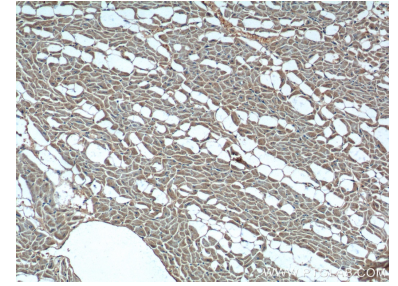
Selected Validation Data



mouse heart tissue were subjected to SDS PAGE followed by western blot with 14932-1-AP (MECR antibody) at dilution of 1:500 incubated at room temperature for 1.5 hours.



Immunofluorescent analysis of (4% PFA) fixed C2C12 cells using MECR antibody (14932-1-AP) at dilution of 1:200 and CoraLite@488-Conjugated AffiniPure Goat Anti-Rabbit IgG(H+L), CL594-Phalloidin (red).



Immunohistochemical analysis of paraffin-embedded human heart tissue slide using 14932-1-AP (MECR Antibody) at dilution of 1:200 (under 10x lens).