

For Research Use Only

CLIC2 Polyclonal antibody

Catalog Number: 14935-1-AP



Basic Information

Catalog Number: 14935-1-AP	GenBank Accession Number: BC005367	Purification Method: Antigen affinity purification
Size: 150ul , Concentration: 500 ug/ml by Nanodrop;	GeneID (NCBI): 1193	Recommended Dilutions: WB 1:500-1:2000
Source: Rabbit	UNIPROT ID: O15247	
Isotype: IgG	Full Name: chloride intracellular channel 2	
Immunogen Catalog Number: AG6766	Calculated MW: 28 kDa	
	Observed MW: 28-30 kDa	

Applications

Tested Applications: WB, ELISA	Positive Controls: WB : human placenta tissue,
Species Specificity: human	

Background Information

CLIC2 (chloride intracellular channel 2), also known as CLCNL2. It is expected to be located in cytoplasm and membrane. CLIC-2 exists as a monomer. It also has an unusual enzyme activity profile. While the CXXC active site motif is conserved between CLIC-2 and the glutaredoxins, no thiol transferase activity was detected. In contrast, low glutathione peroxidase activity was recorded. CLIC-2 was found to be widely distributed in tissues including heart and skeletal muscle. Functional studies showed that CLIC-2 inhibited cardiac ryanodine receptor Ca²⁺ release channels in lipid bilayers when added to the cytoplasmic side of the channels and inhibited Ca²⁺ release from cardiac sarcoplasmic reticulum vesicles. The calculated molecular weight of CLIC2 is 28 kDa.

Storage

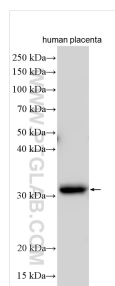
Storage:
Store at -20°C. Stable for one year after shipment.
Storage Buffer:
PBS with 0.02% sodium azide and 50% glycerol pH 7.3.
Aliquoting is unnecessary for -20°C storage

*** 20ul sizes contain 0.1% BSA

For technical support and original validation data for this product please contact:
T: 1 (888) 4PTGLAB (1-888-478-4522) (toll free in USA), or 1(312) 455-8498 (outside USA)
E: proteintech@ptglab.com
W: ptglab.com

This product is exclusively available under Proteintech Group brand and is not available to purchase from any other manufacturer.

Selected Validation Data



Various lysates were subjected to SDS PAGE followed by western blot with 14935-1-AP (CLIC2 antibody) at dilution of 1:1000 incubated at room temperature for 1.5 hours.