

For Research Use Only

# CLIC2 Polyclonal antibody, PBS Only

Catalog Number:14935-1-PBS



## Basic Information

**Catalog Number:**

14935-1-PBS

**Size:**

100ug , Concentration: 1 mg/ml by Nanodrop;

**Source:**

Rabbit

**Isotype:**

IgG

**Immunogen Catalog Number:**

AG6766

**GenBank Accession Number:**

BC005367

**GeneID (NCBI):**

1193

**UNIPROT ID:**

O15247

**Full Name:**

chloride intracellular channel 2

**Calculated MW:**

28 kDa

**Observed MW:**

28-30 kDa

**Purification Method:**

Antigen affinity purification

## Applications

**Tested Applications:**

WB, Indirect ELISA

**Species Specificity:**

human

## Background Information

CLIC2 (chloride intracellular channel 2), also known as CLCNL2. It is expected to be located in cytoplasm and membrane. CLIC-2 exists as a monomer. It also has an unusual enzyme activity profile. While the CXXC active site motif is conserved between CLIC-2 and the glutaredoxins, no thiol transferase activity was detected. In contrast, low glutathione peroxidase activity was recorded. CLIC-2 was found to be widely distributed in tissues including heart and skeletal muscle. Functional studies showed that CLIC-2 inhibited cardiac ryanodine receptor Ca<sup>2+</sup> release channels in lipid bilayers when added to the cytoplasmic side of the channels and inhibited Ca<sup>2+</sup> release from cardiac sarcoplasmic reticulum vesicles. The calculated molecular weight of CLIC2 is 28 kDa.

## Storage

**Storage:**

Store at -80°C.

**Storage Buffer:**

PBS only, pH7.3

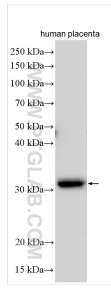
For technical support and original validation data for this product please contact:

T: 1 (888) 4PTGLAB (1-888-478-4522) (toll free in USA), or 1(312) 455-8498 (outside USA)

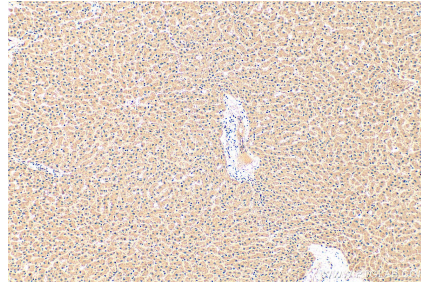
E: [proteintech@ptglab.com](mailto:proteintech@ptglab.com)  
W: [ptglab.com](http://ptglab.com)

**This product is exclusively available under Proteintech Group brand and is not available to purchase from any other manufacturer.**

## Selected Validation Data



Various lysates were subjected to SDS PAGE followed by western blot with 14935-1-AP (CLIC2 antibody) at dilution of 1:1000 incubated at room temperature for 1.5 hours. This data was developed using the same antibody clone with 14935-1-PBS in a different storage buffer formulation.



Immunohistochemical analysis of paraffin-embedded human liver tissue slide using 14935-1-AP (CLIC2 antibody) at dilution of 1:200 (under 10x lens). Heat mediated antigen retrieval with Tris-EDTA buffer (pH 9.0). This data was developed using the same antibody clone with 14935-1-PBS in a different storage buffer formulation.