

For Research Use Only

BLMH Polyclonal antibody

Catalog Number: 14941-1-AP

4 Publications



Basic Information

Catalog Number:

14941-1-AP

Size:

150ul, Concentration: 400 ug/ml by Nanodrop and 207 ug/ml by Bradford method using BSA as the standard;

Source:

Rabbit

Isotype:

IgG

Immunogen Catalog Number:

AG6888

GenBank Accession Number:

BC003616

GeneID (NCBI):

642

UNIPROT ID:

Q13867

Full Name:

bleomycin hydrolase

Calculated MW:

53 kDa

Observed MW:

50 kDa

Purification Method:

Antigen affinity purification

Recommended Dilutions:

WB 1:500-1:3000

IP 0.5-4.0 ug for 1.0-3.0 mg of total protein lysate

IHC 1:20-1:200

IF/ICC 1:50-1:500

Applications

Tested Applications:

WB, IHC, IF/ICC, IP, ELISA

Cited Applications:

WB, IHC, IF

Species Specificity:

human, mouse, rat

Cited Species:

human, mouse, hamster

Note-IHC: suggested antigen retrieval with TE buffer pH 9.0; (*) Alternatively, antigen retrieval may be performed with citrate buffer pH 6.0

Positive Controls:

WB: human colon tissue, mouse pancreas tissue, mouse spleen tissue

IP: mouse skin tissue,

IHC: human colon cancer tissue,

IF/ICC: HeLa cells,

Background Information

BLMH(Bleomycin hydrolase) is also named as BH, BMH and belongs to the peptidase C1 family. The gene is expressed in many human tissues with elevated expression levels found in testis, skeletal muscle, and pancreas, and low levels of expression in colon and peripheral blood leukocytes(PMID:8639621). The protein catalyzes the inactivation of the antitumor drug BLM (a glycopeptide) by hydrolyzing the carboxamide bond of its B-aminoalaninamide moiety thus protecting normal and malignant cells from BLM toxicity. BH-immunoreactivity is essentially located in the cytoplasm and at the outer membrane of the rough endoplasmic reticulum of epithelial cells of the kidney, as well as in that of hepatocytes of the liver(PMID:17158865).

Notable Publications

Author	Pubmed ID	Journal	Application
Ljudmila Solovjeva	26458748	BMC Mol Biol	IF
Bin Chen	36484368	Int J Oncol	IHC
Rui Yang	38267624	Cancer Gene Ther	WB

Storage

Storage:

Store at -20°C. Stable for one year after shipment.

Storage Buffer:

PBS with 0.02% sodium azide and 50% glycerol pH 7.3.

Aliquoting is unnecessary for -20°C storage

*** 20ul sizes contain 0.1% BSA

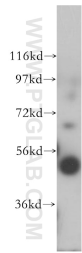
For technical support and original validation data for this product please contact:

T: 1 (888) 4PTGLAB (1-888-478-4522) (toll free in USA), or 1(312) 455-8498 (outside USA)

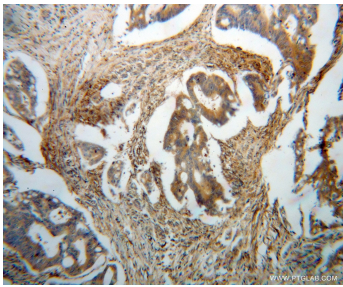
E: proteintech@ptglab.com
W: ptglab.com

This product is exclusively available under Proteintech Group brand and is not available to purchase from any other manufacturer.

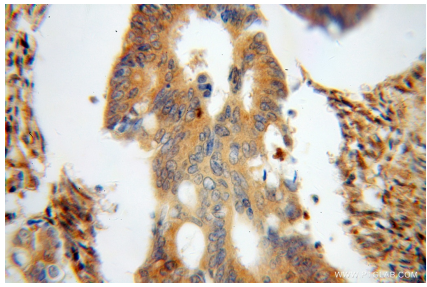
Selected Validation Data



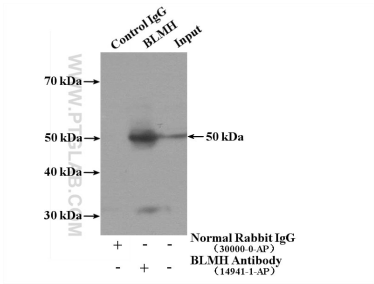
human colon tissue were subjected to SDS PAGE followed by western blot with 14941-1-AP (BLMH antibody) at dilution of 1:600 incubated at room temperature for 1.5 hours.



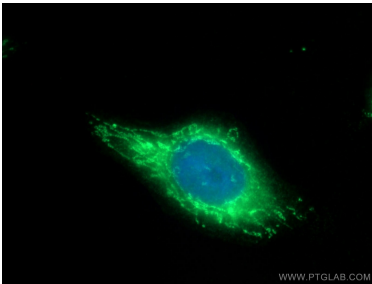
Immunohistochemical analysis of paraffin-embedded human colon cancer using 14941-1-AP (BLMH antibody) at dilution of 1:100 (under 10x lens).



Immunohistochemical analysis of paraffin-embedded human colon cancer using 14941-1-AP (BLMH antibody) at dilution of 1:100 (under 40x lens).



IP result of anti-BLMH (IP:14941-1-AP, 4ug; Detection:14941-1-AP 1:1000) with mouse skin tissue lysate 3200ug.



Immunofluorescent analysis of (-20°C Ethanol) fixed HeLa cells using 14941-1-AP (BLMH antibody) at dilution of 1:50 and Alexa Fluor 488-conjugated Goat Anti-Rabbit IgG(H+L).