

For Research Use Only

# KARS Polyclonal antibody, PBS Only

Catalog Number: 14951-1-PBS

Featured Product



## Basic Information

**Catalog Number:**

14951-1-PBS

**Size:**

100ug, Concentration: 1 mg/ml by Nanodrop;

**Source:**

Rabbit

**Isotype:**

IgG

**Immunogen Catalog Number:**

AG6778

**GenBank Accession Number:**

BC004132

**GeneID (NCBI):**

3735

**UNIPROT ID:**

Q15046

**Full Name:**

lysyl-tRNA synthetase

**Calculated MW:**

68 kDa

**Observed MW:**

68 kDa

**Purification Method:**

Antigen affinity purification

## Applications

**Tested Applications:**

WB, IHC, IF/ICC, Indirect ELISA

**Species Specificity:**

human

## Background Information

KARS (lysyl-tRNA synthetase) is a gene that encodes an enzyme critical for protein synthesis, specifically responsible for attaching the amino acid lysine to its corresponding transfer RNA (tRNA) in both the cytoplasm and mitochondria. This enzyme plays a crucial role in the process of aminoacylation, which is essential for accurate protein translation from mRNA sequences. Mutations in the KARS gene have been associated with a variety of neurological and systemic disorders, reflecting the enzyme's importance in cellular function.

## Storage

**Storage:**

Store at -80°C.

**Storage Buffer:**

PBS only, pH7.3

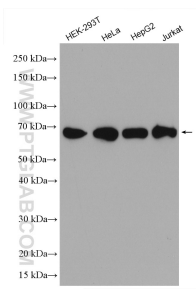
For technical support and original validation data for this product please contact:

T: 1 (888) 4PTGLAB (1-888-478-4522) (toll free in USA), or 1(312) 455-8498 (outside USA)

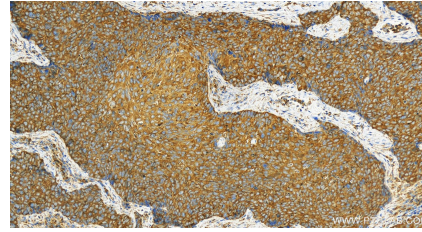
E: [proteintech@ptglab.com](mailto:proteintech@ptglab.com)  
W: [ptglab.com](http://ptglab.com)

**This product is exclusively available under Proteintech Group brand and is not available to purchase from any other manufacturer.**

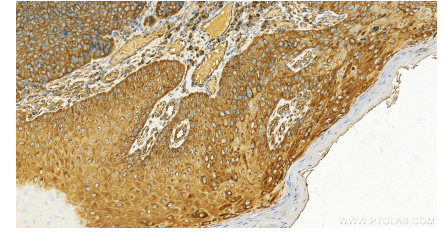
## Selected Validation Data



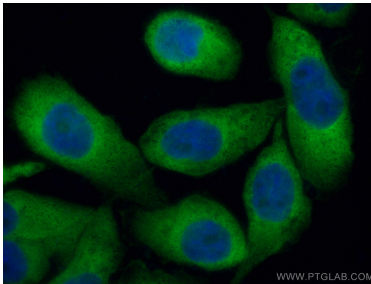
Various lysates were subjected to SDS PAGE followed by western blot with 14951-1-AP (KARS antibody) at dilution of 1:2000 incubated at room temperature for 1.5 hours. This data was developed using the same antibody clone with 14951-1-PBS in a different storage buffer formulation.



Immunohistochemical analysis of paraffin-embedded human brown disease slide using 14951-1-AP (KARS antibody) at dilution of 1:400 (under 20x lens). Heat mediated antigen retrieval with Tris-EDTA buffer (pH 9.0). This data was developed using the same antibody clone with 14951-1-PBS in a different storage buffer formulation.



Immunohistochemical analysis of paraffin-embedded human brown disease slide using 14951-1-AP (KARS antibody) at dilution of 1:400 (under 20x lens). Heat mediated antigen retrieval with Tris-EDTA buffer (pH 9.0). This data was developed using the same antibody clone with 14951-1-PBS in a different storage buffer formulation.



Immunofluorescent analysis of (4% PFA) fixed A431 cells using KARS antibody (14951-1-AP) at dilution of 1:200 and CoralLite@488-Conjugated AffiniPure Goat Anti-Rabbit IgG(H+L). This data was developed using the same antibody clone with 14951-1-PBS in a different storage buffer formulation.