

For Research Use Only

RPS15 Polyclonal antibody

Catalog Number: 14957-1-AP **6 Publications**



Basic Information

Catalog Number: 14957-1-AP	GenBank Accession Number: BC064908	Purification Method: Antigen affinity purification
Size: 150ul , Concentration: 400 µg/ml by Nanodrop and 200 µg/ml by Bradford method using BSA as the standard;	GeneID (NCBI): 6209	Recommended Dilutions: WB 1:500-1:2400 IHC 1:20-1:200 IF 1:20-1:200
Source: Rabbit	Full Name: ribosomal protein S15	
Isotype: IgG	Calculated MW: 17 kDa	
Immunogen Catalog Number: AG6795	Observed MW: 17 kDa	

Applications

Tested Applications:

IF, IHC, WB, ELISA

Cited Applications:

IF, WB

Species Specificity:

human, mouse, rat

Cited Species:

human

Note-IHC: suggested antigen retrieval with TE buffer pH 9.0; (*) Alternatively, antigen retrieval may be performed with citrate buffer pH 6.0

Positive Controls:

WB: human liver tissue, HeLa cells, L02 cells, mouse brain tissue, mouse liver tissue

IHC: human liver cancer tissue,

IF: HeLa cells,

Background Information

RPS15, also named as RIG protein or Small ribosomal subunit protein uS19, is a 145 amino acid protein, which belongs to the universal ribosomal protein uS19 family. RPS15 is a ribosomal small subunit assembly and involved in nuclear-transcribed mRNA catabolic process, nonsense-mediated decay.

Notable Publications

Author	Pubmed ID	Journal	Application
Long Jiang	28502657	Curr Biol	WB
Kehui Xiang	34213414	Elife	WB
Diego Acosta-Alvear	30582518	Elife	WB

Storage

Storage:

Store at -20°C. Stable for one year after shipment.

Storage Buffer:

PBS with 0.02% sodium azide and 50% glycerol pH 7.3.

Aliquoting is unnecessary for -20°C storage

***** 20ul sizes contain 0.1% BSA**

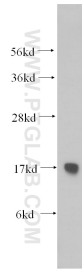
For technical support and original validation data for this product please contact:

T: 1 (888) 4PTGLAB (1-888-478-4522) (toll free in USA), or 1(312) 455-8498 (outside USA)

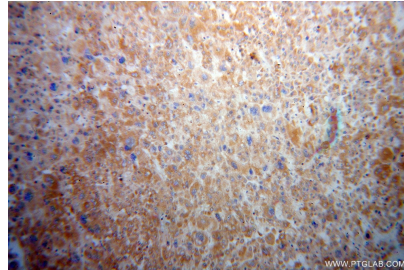
E: proteintech@ptglab.com
W: ptglab.com

This product is exclusively available under Proteintech Group brand and is not available to purchase from any other manufacturer.

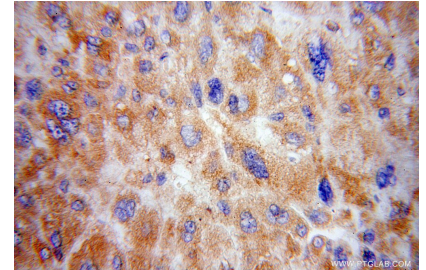
Selected Validation Data



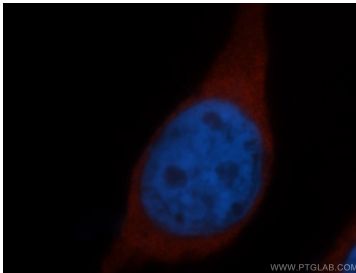
human liver tissue were subjected to SDS PAGE followed by western blot with 14957-1-AP (RPS15 antibody) at dilution of 1:500 incubated at room temperature for 1.5 hours.



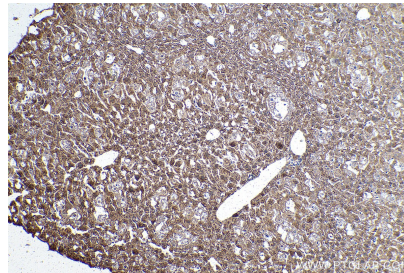
Immunohistochemical analysis of paraffin-embedded human liver cancer using 14957-1-AP (RPS15 antibody) at dilution of 1:100 (under 10x lens).



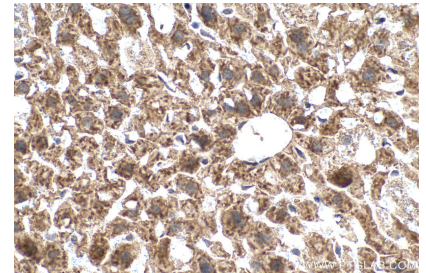
Immunohistochemical analysis of paraffin-embedded human liver cancer using 14957-1-AP (RPS15 antibody) at dilution of 1:100 (under 40x lens).



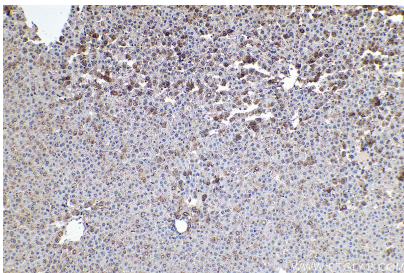
Immunofluorescent analysis of HeLa cells, using RPS15 antibody 14957-1-AP at 1:50 dilution and Rhodamine-labeled goat anti-rabbit IgG (red). Blue pseudocolor = DAPI (fluorescent DNA dye).



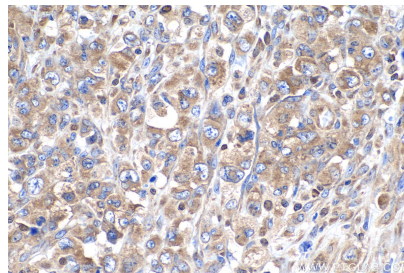
Immunohistochemical analysis of paraffin-embedded mouse liver tissue slide using 14957-1-AP (RPS15 antibody) at dilution of 1:800 (under 10x lens). Heat mediated antigen retrieval with Tris-EDTA buffer (pH 9.0).



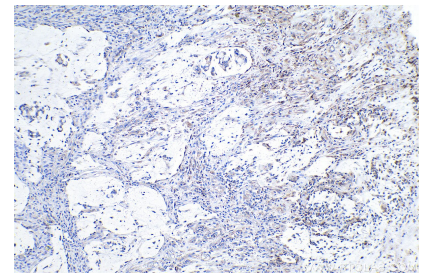
Immunohistochemical analysis of paraffin-embedded mouse liver tissue slide using 14957-1-AP (RPS15 antibody) at dilution of 1:800 (under 40x lens). Heat mediated antigen retrieval with Tris-EDTA buffer (pH 9.0).



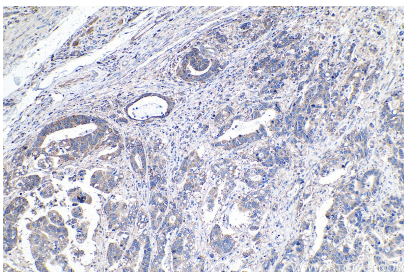
Immunohistochemical analysis of paraffin-embedded rat liver tissue slide using 14957-1-AP (RPS15 antibody) at dilution of 1:800 (under 10x lens). Heat mediated antigen retrieval with Tris-EDTA buffer (pH 9.0).



Immunohistochemical analysis of paraffin-embedded human lymphoma tissue slide using 14957-1-AP (RPS15 antibody) at dilution of 1:800 (under 40x lens). Heat mediated antigen retrieval with Tris-EDTA buffer (pH 9.0).



Immunohistochemical analysis of paraffin-embedded human colon cancer tissue slide using 14957-1-AP (RPS15 antibody) at dilution of 1:800 (under 10x lens). Heat mediated antigen retrieval with Tris-EDTA buffer (pH 9.0).



Immunohistochemical analysis of paraffin-embedded human stomach cancer tissue slide using 14957-1-AP (RPS15 antibody) at dilution of 1:800 (under 10x lens). Heat mediated antigen retrieval with Tris-EDTA buffer (pH 9.0).