

For Research Use Only

# RBM8A,Y14 Polyclonal antibody

Catalog Number: 14958-1-AP

Featured Product

4 Publications



## Basic Information

### Catalog Number:

14958-1-AP

### Size:

150ul, Concentration: 450 µg/ml by Nanodrop and 220 µg/ml by Bradford method using BSA as the standard;

### Source:

Rabbit

### Isotype:

IgG

### Immunogen Catalog Number:

AG6800

### GenBank Accession Number:

BC017088

### GeneID (NCBI):

9939

### Full Name:

RNA binding motif protein 8A

### Calculated MW:

20 kDa

### Observed MW:

24 kDa

### Purification Method:

Antigen affinity purification

### Recommended Dilutions:

WB 1:500-1:3000

IP 0.5-4.0 µg for IP and 1:500-1:1000 for WB

IHC 1:50-1:500

IF 1:50-1:500

## Applications

### Tested Applications:

IF, IHC, IP, WB, ELISA

### Cited Applications:

IF, IHC, WB

### Species Specificity:

human, mouse, rat

### Cited Species:

human, mouse

**Note-IHC: suggested antigen retrieval with TE buffer pH 9.0; (\*) Alternatively, antigen retrieval may be performed with citrate buffer pH 6.0**

### Positive Controls:

**WB** : HEK-293T cells, Jurkat cells, HeLa cells, MDA-MB-453s cells

**IP** : HeLa cells,

**IHC** : human brain tissue, human spleen tissue, human testis tissue, human ovary tissue

**IF** : HeLa cells,

## Background Information

### Notable Publications

Author	Pubmed ID	Journal	Application
Yan Lin	34804926	Front Oncol	WB,IHC
Xiaojin Song	35568705	Cell Death Discov	WB
Mi Kyung Park	34879239	Cell Metab	WB

## Storage

### Storage:

Store at -20°C. Stable for one year after shipment.

### Storage Buffer:

PBS with 0.02% sodium azide and 50% glycerol pH 7.3.

Aliquoting is unnecessary for -20°C storage

\*\*\* 20ul sizes contain 0.1% BSA

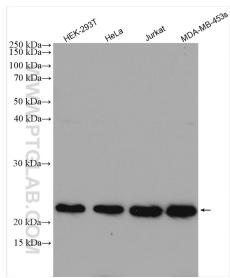
For technical support and original validation data for this product please contact:

T: 1 (888) 4PTGLAB (1-888-478-4522) (toll free in USA), or 1(312) 455-8498 (outside USA)

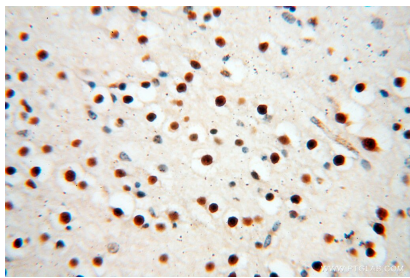
E: [proteintech@ptglab.com](mailto:proteintech@ptglab.com)  
W: [ptglab.com](http://ptglab.com)

This product is exclusively available under Proteintech Group brand and is not available to purchase from any other manufacturer.

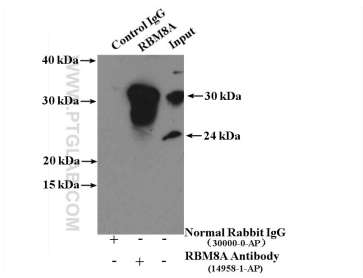
Selected Validation Data



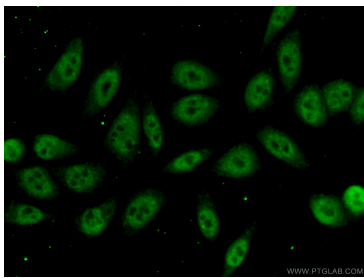
Various lysates were subjected to SDS PAGE followed by western blot with 14958-1-AP (RBM8A,Y14 antibody) at dilution of 1:1500 incubated at room temperature for 1.5 hours.



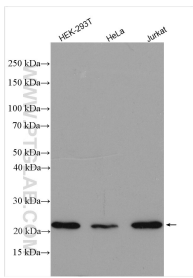
Immunohistochemical analysis of paraffin-embedded human brain using 14958-1-AP (RBM8A,Y14 antibody) at dilution of 1:100 (under 40x lens).



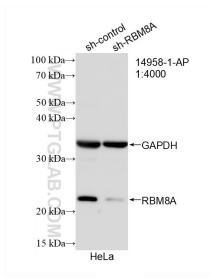
IP Result of anti-RBM8A,Y14 (IP:14958-1-AP, 4ug; Detection:14958-1-AP 1:500) with HeLa cells lysate 3200ug.



Immunofluorescent analysis of (10% Formaldehyde) fixed HeLa cells using 14958-1-AP (RBM8A,Y14 antibody) at dilution of 1:50 and Alexa Fluor 488-conjugated AffiniPure Goat Anti-Rabbit IgG(H+L).



Various lysates were subjected to SDS PAGE followed by western blot with 14958-1-AP (RBM8A,Y14 antibody) at dilution of 1:3000 incubated at room temperature for 1.5 hours.



WB result of RBM8A,Y14 antibody (14958-1-AP; 1:4000; incubated at room temperature for 1.5 hours) with sh-Control and sh-RBM8A,Y14 transfected HeLa cells.