

For Research Use Only

PABPC4 Polyclonal antibody

Catalog Number: 14960-1-AP

Featured Product

8 Publications



Basic Information

Catalog Number:

14960-1-AP

Size:

150ul, Concentration: 500 ug/ml by Nanodrop and 333 ug/ml by Bradford method using BSA as the standard;

Source:

Rabbit

Isotype:

IgG

Immunogen Catalog Number:

AG6813

GenBank Accession Number:

BC065540

GeneID (NCBI):

8761

UNIPROT ID:

Q13310

Full Name:

poly(A) binding protein, cytoplasmic 4 (inducible form)

Calculated MW:

70 kDa

Observed MW:

70-71 kDa

Purification Method:

Antigen affinity purification

Recommended Dilutions:

WB 1:1000-1:4000

IP 0.5-4.0 ug for 1.0-3.0 mg of total protein lysate

IHC 1:250-1:1000

IF/ICC 1:50-1:500

Applications

Tested Applications:

WB, IHC, IF/ICC, IP, ELISA

Cited Applications:

WB, IHC, IF, IP

Species Specificity:

human, mouse, rat

Cited Species:

human, mouse

Note-IHC: suggested antigen retrieval with TE buffer pH 9.0; (*) Alternatively, antigen retrieval may be performed with citrate buffer pH 6.0

Positive Controls:

WB: HeLa cells, mouse heart tissue, human brain tissue, Jurkat cells

IP: mouse heart tissue,

IHC: mouse skeletal muscle tissue,

IF/ICC: HepG2 cells, HeLa cells

Notable Publications

Author	Pubmed ID	Journal	Application
Evan P Booy	30247708	Nucleic Acids Res	WB,IP
Emily Yang	36067236	PLoS Pathog	WB
Xiaotong Sun	30404616	BMC Pregnancy Childbirth	WB

Storage

Storage:

Store at -20°C. Stable for one year after shipment.

Storage Buffer:

PBS with 0.02% sodium azide and 50% glycerol pH 7.3.

Aliquoting is unnecessary for -20°C storage

*** 20ul sizes contain 0.1% BSA

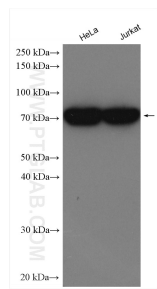
For technical support and original validation data for this product please contact:

T: 1 (888) 4PTGLAB (1-888-478-4522) (toll free in USA), or 1(312) 455-8498 (outside USA)

E: proteintech@ptglab.com
W: ptglab.com

This product is exclusively available under Proteintech Group brand and is not available to purchase from any other manufacturer.

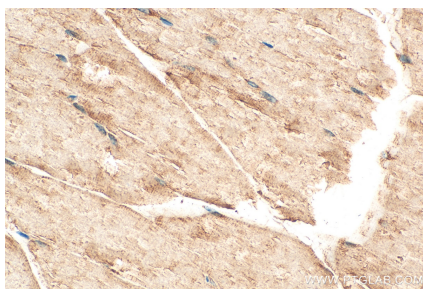
Selected Validation Data



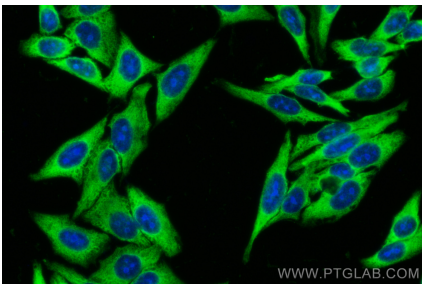
Various lysates were subjected to SDS PAGE followed by western blot with 14960-1-AP (PABPC4 antibody) at dilution of 1:2000 incubated at room temperature for 1.5 hours.



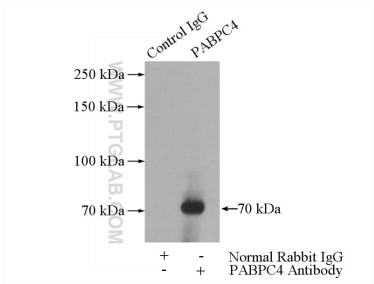
Immunohistochemical analysis of paraffin-embedded mouse skeletal muscle tissue slide using 14960-1-AP (PABPC4 antibody) at dilution of 1:500 (under 10x lens).



Immunohistochemical analysis of paraffin-embedded mouse skeletal muscle tissue slide using 14960-1-AP (PABPC4 antibody) at dilution of 1:500 (under 40x lens).



Immunofluorescent analysis of (-20°C Ethanol) fixed HepG2 cells using PABPC4 antibody (14960-1-AP) at dilution of 1:200 and CoraLite®488-Conjugated Goat Anti-Rabbit IgG(H+L).



IP result of anti-PABPC4 (IP:14960-1-AP, 4ug; Detection:14960-1-AP 1:500) with mouse heart tissue lysate 4000ug.