

For Research Use Only

# SLC25A39 Polyclonal antibody

Catalog Number: 14963-1-AP

Featured Product

7 Publications



## Basic Information

Catalog Number:

14963-1-AP

Size:

150ul, Concentration: 700 ug/ml by Nanodrop;

Source:

Rabbit

Isotype:

IgG

Immunogen Catalog Number:

AG6825

GenBank Accession Number:

BC001398

GeneID (NCBI):

51629

UNIPROT ID:

Q9BZJ4

Full Name:

solute carrier family 25, member 39

Calculated MW:

39 kDa

Observed MW:

37-39 kDa

Purification Method:

Antigen affinity purification

Recommended Dilutions:

WB 1:500-1:1000

## Applications

Tested Applications:

WB, ELISA

Cited Applications:

WB, IF

Species Specificity:

human, mouse, rat

Cited Species:

human, mouse

Positive Controls:

WB : mouse brain tissue, rat brain tissue

## Background Information

SLC25A39, a member of the mitochondrial carrier family, is a mitochondrial transporter for basic amino acids localized to mitochondria. SLC25A39 can be expressed in human testis, kidney, heart, brain, liver and spleen. It has been reported that SLC25A39 is essential for heme biosynthesis in mammals. SLC25A29 is associated with mitochondrial protein synthesis and amino acid degradation. (PMID: 19656490, 11139402, 24652292)

## Notable Publications

Author	Pubmed ID	Journal	Application
Ying Wang	34707288	Nature	WB, IF
Xiaojian Shi	35513392	Nat Commun	WB
Jiao Liu	39609608	Sci Rep	WB

## Storage

Storage:

Store at -20°C. Stable for one year after shipment.

Storage Buffer:

PBS with 0.02% sodium azide and 50% glycerol pH 7.3.

Aliquoting is unnecessary for -20°C storage

\*\*\* 20ul sizes contain 0.1% BSA

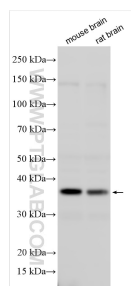
For technical support and original validation data for this product please contact:

T: 1 (888) 4PTGLAB (1-888-478-4522) (toll free in USA), or 1(312) 455-8498 (outside USA)

E: [proteintech@ptglab.com](mailto:proteintech@ptglab.com)  
W: [ptglab.com](http://ptglab.com)

This product is exclusively available under Proteintech Group brand and is not available to purchase from any other manufacturer.

## Selected Validation Data



Various lysates were subjected to SDS PAGE followed by western blot with 14963-1-AP (SLC25A39 antibody) at dilution of 1:500 incubated at room temperature for 1.5 hours.