

For Research Use Only

# DDAH2 Polyclonal antibody

Catalog Number: 14966-1-AP **6 Publications**



## Basic Information

<b>Catalog Number:</b> 14966-1-AP	<b>GenBank Accession Number:</b> BC001435	<b>Purification Method:</b> Antigen affinity purification
<b>Size:</b> 150ul , Concentration: 400 µg/ml by Nanodrop and 233 µg/ml by Bradford method using BSA as the standard;	<b>GeneID (NCBI):</b> 23564	<b>Recommended Dilutions:</b> WB 1:1000-1:5000 IP 0.5-4.0 ug for IP and 1:500-1:1000 for WB
<b>Source:</b> Rabbit	<b>Full Name:</b> dimethylarginine dimethylaminohydrolase 2	<b>IHC 1:20-1:200</b>
<b>Isotype:</b> IgG	<b>Calculated MW:</b> 29 kDa	
<b>Immunogen Catalog Number:</b> AG6831	<b>Observed MW:</b> 30 kDa	

## Applications

<b>Tested Applications:</b> IHC, IP, WB, ELISA	<b>Positive Controls:</b> WB : COLO 320 cells, mouse colon tissue, rat colon tissue
<b>Cited Applications:</b> IHC, WB	<b>IP :</b> COLO 320 cells,
<b>Species Specificity:</b> human, mouse, rat	<b>IHC :</b> human colon cancer tissue,
<b>Cited Species:</b> human, mouse, rat	

**Note-IHC: suggested antigen retrieval with TE buffer pH 9.0; (\*) Alternatively, antigen retrieval may be performed with citrate buffer pH 6.0**

## Background Information

The DDAH family of proteins is formed by two isoforms, DDAH-1 and DDAH-2, both of which utilize ADMA as their substrate and increase NOS activity. DDAH-2, also named as DDAH, G6A, NG30, is the most prevalent isoform in blood vessels and endothelium and is important for embryonic development. It has also been linked to other diseases, such as hypertension, cerebral hemorrhage, cardiac disease, and diabetes. In cultured human endothelial cells, DDAH-2 had been found only in the cytosol, but in the nuclei of rat vascular smooth muscle cells. (PMID:21898353).

## Notable Publications

Author	Pubmed ID	Journal	Application
Ying Wang	34703990	iScience	WB
Kai Cui	28103290	PLoS One	WB, IHC
Ying Wang	30118322	FASEB J	WB

## Storage

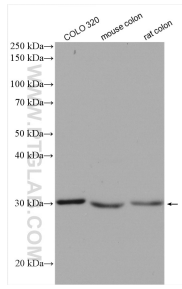
**Storage:**  
Store at -20°C. Stable for one year after shipment.  
**Storage Buffer:**  
PBS with 0.02% sodium azide and 50% glycerol pH 7.3.  
Aliquoting is unnecessary for -20°C storage

\*\*\* 20ul sizes contain 0.1% BSA

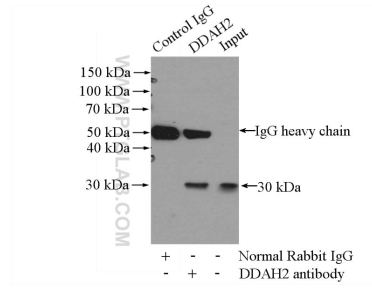
For technical support and original validation data for this product please contact:  
T: 1 (888) 4PTGLAB (1-888-478-4522) (toll free in USA), or 1(312) 455-8498 (outside USA)  
E: proteintech@ptglab.com  
W: ptglab.com

This product is exclusively available under Proteintech Group brand and is not available to purchase from any other manufacturer.

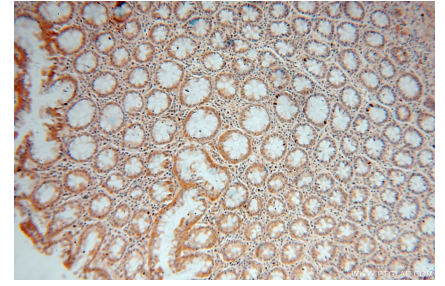
## Selected Validation Data



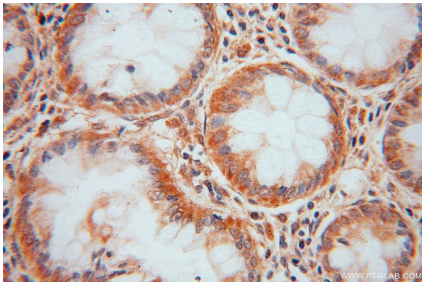
Various lysates were subjected to SDS PAGE followed by western blot with 14966-1-AP (DDAH2 antibody) at dilution of 1:4000 incubated at room temperature for 1.5 hours.



IP Result of anti-DDAH2 (IP:14966-1-AP, 3ug; Detection:14966-1-AP 1:500) with COLO 320 cells lysate 2000ug.



Immunohistochemical analysis of paraffin-embedded human colon cancer using 14966-1-AP (DDAH2 antibody) at dilution of 1:50 (under 10x lens).



Immunohistochemical analysis of paraffin-embedded human colon cancer using 14966-1-AP (DDAH2 antibody) at dilution of 1:50 (under 40x lens).