

For Research Use Only

Chromogranin B Polyclonal antibody, PBS Only

Catalog Number: 14968-1-PBS

Featured Product



Basic Information

Catalog Number:

14968-1-PBS

Size:

100ug, Concentration: 1 mg/ml by Nanodrop;

Source:

Rabbit

Isotype:

IgG

Immunogen Catalog Number:

AG6833

GenBank Accession Number:

BC000375

GeneID (NCBI):

1114

UNIPROT ID:

P05060

Full Name:

chromogranin B (secretogranin 1)

Calculated MW:

78 kDa

Observed MW:

70-100 kDa

Purification Method:

Antigen affinity purification

Applications

Tested Applications:

WB, IHC, IF-P, IF-Fro, FC (Intra), Indirect ELISA

Species Specificity:

human, mouse, rat

Background Information

Chromogranin B is also named as Secretogranin-1, Sgl, CgB, CHGB and SCG1. CHGB, a secretory granule protein, inserts itself into membrane and forms a chloride-conducting channel (PMID: 30456382). Native CHGB distributes nearly equally in soluble and membrane-bound forms, and both reconstitute highly selective anion channels in membrane (PMID: 37435575). The calculated molecular weight of Chromogranin B is at 78kDa. It has been shown that CHGB has a clear degradation band at ~50 kDa (<https://www.biorxiv.org/content/10.1101/2019.12.28.890053v1.full.pdf>).

Storage

Storage:

Store at -80°C.

Storage Buffer:

PBS only, pH7.3

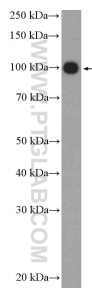
For technical support and original validation data for this product please contact:

T: 1 (888) 4PTGLAB (1-888-478-4522) (toll free in USA), or 1(312) 455-8498 (outside USA)

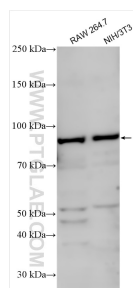
E: proteintech@ptglab.com
W: ptglab.com

This product is exclusively available under Proteintech Group brand and is not available to purchase from any other manufacturer.

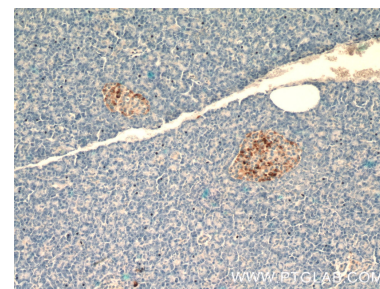
Selected Validation Data



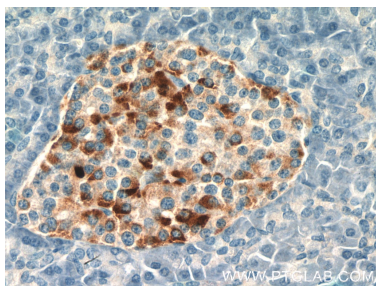
PC-12 cells were subjected to SDS PAGE followed by western blot with 14968-1-AP (Chromogranin B antibody at dilution of 1:300 incubated at room temperature for 1.5 hours. This data was developed using the same antibody clone with 14968-1-PBS in a different storage buffer formulation.



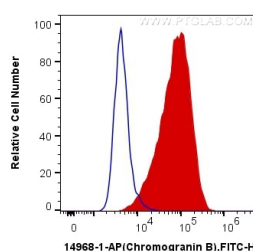
Various lysates were subjected to SDS PAGE followed by western blot with 14968-1-AP (Chromogranin B antibody) at dilution of 1:2000 incubated at room temperature for 1.5 hours. This data was developed using the same antibody clone with 14968-1-PBS in a different storage buffer formulation.



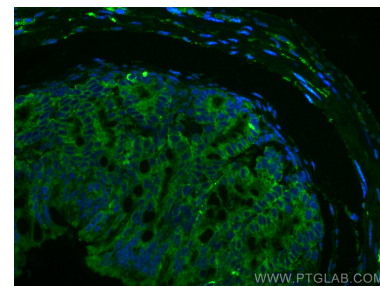
Immunohistochemical analysis of paraffin-embedded human pancreas tissue slide using 14968-1-AP (Chromogranin B antibody at dilution of 1:200 (under 10x lens). This data was developed using the same antibody clone with 14968-1-PBS in a different storage buffer formulation.



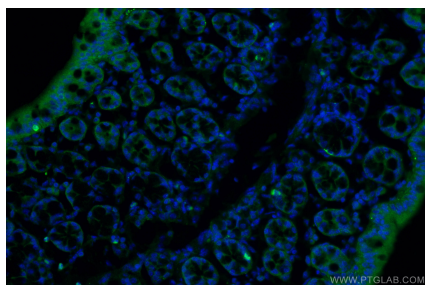
Immunohistochemical analysis of paraffin-embedded human pancreas tissue slide using 14968-1-AP (Chromogranin B antibody at dilution of 1:200 (under 40x lens). This data was developed using the same antibody clone with 14968-1-PBS in a different storage buffer formulation.



1X10⁶ PC-12 cells were intracellularly stained with 0.4 ug Anti-Human Chromogranin B (14968-1-AP) and CoraLite®488-Conjugated AffiniPure Goat Anti-Rabbit IgG(H+L) at dilution 1:1000 (red), or 0.4 ug Control Antibody. Cells were fixed with 4% PFA and permeabilized with Flow Cytometry Perm Buffer (PF00011-C). This data was developed using the same antibody clone with 14968-1-PBS in a different storage buffer formulation.



Immunofluorescent analysis of (4% PFA) fixed mouse colon tissue using Chromogranin B antibody (14968-1-AP) at dilution of 1:200 and CoraLite®488-Conjugated AffiniPure Goat Anti-Rabbit IgG(H+L). This data was developed using the same antibody clone with 14968-1-PBS in a different storage buffer formulation.



Immunofluorescent analysis of (4% PFA) fixed frozen OCT-embedded mouse colon tissue using 14968-1-AP (Chromogranin B antibody) at dilution of 1:200 and CoraLite®488-Conjugated AffiniPure Goat Anti-Rabbit IgG(H+L). This data was developed using the same antibody clone with 14968-1-PBS in a different storage buffer formulation.