

For Research Use Only

SNRPF Polyclonal antibody

Catalog Number: 14977-1-AP



Basic Information

Catalog Number:

14977-1-AP

Size:

150ul, Concentration: 153 ug/ml by Nanodrop and 153 ug/ml by Bradford method using BSA as the standard;

Source:

Rabbit

Isotype:

IgG

Immunogen Catalog Number:

AG6889

GenBank Accession Number:

BC002505

GeneID (NCBI):

6636

UNIPROT ID:

P62306

Full Name:

small nuclear ribonucleoprotein polypeptide F

Calculated MW:

10 kDa

Observed MW:

10 kDa

Purification Method:

Antigen affinity purification

Recommended Dilutions:

WB 1:500-1:3000

IHC 1:20-1:200

IF/ICC 1:50-1:500

Applications

Tested Applications:

WB, IHC, IF/ICC, ELISA

Species Specificity:

human, mouse, rat

Note-IHC: suggested antigen retrieval with TE buffer pH 9.0; (*) Alternatively, antigen retrieval may be performed with citrate buffer pH 6.0

Positive Controls:

WB: human heart tissue, HeLa cells, HepG2 cells, MCF-7 cells, mouse kidney tissue, mouse liver tissue

IHC: human breast cancer tissue,

IF/ICC: HeLa cells,

Background Information

The 4 major small nuclear ribonucleoprotein particles (snRNPs), U1, U2, U4/U6, and U5, are essential components of the eukaryotic pre-mRNA splicing machinery. These snRNPs share 8 proteins which form the snRNP structural core: B/B-prime (SNRPB), D1 (SNRPD1), D2 (SNRPD2), D3 (SNRPD3), E (SNRPE), F (SNRPF), and G (SNRPG). These proteins have a role in the biogenesis of the snRNPs.

Storage

Storage:

Store at -20°C. Stable for one year after shipment.

Storage Buffer:

PBS with 0.02% sodium azide and 50% glycerol pH 7.3.

Aliquoting is unnecessary for -20°C storage

*** 20ul sizes contain 0.1% BSA

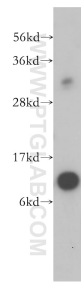
For technical support and original validation data for this product please contact:

T: 1 (888) 4PTGLAB (1-888-478-4522) (toll free in USA), or 1(312) 455-8498 (outside USA)

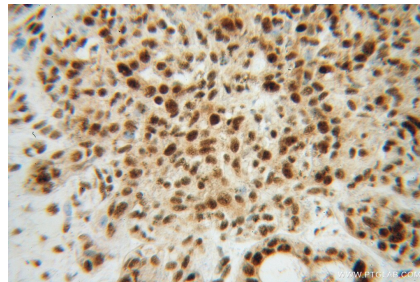
E: proteintech@ptglab.com
W: ptglab.com

This product is exclusively available under Proteintech Group brand and is not available to purchase from any other manufacturer.

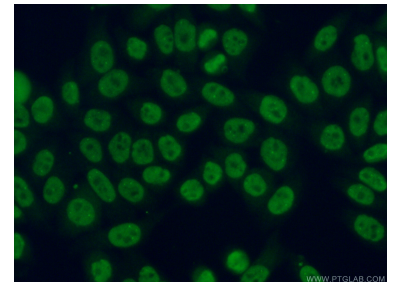
Selected Validation Data



human heart tissue were subjected to SDS PAGE followed by western blot with 14977-1-AP (SNRPF antibody) at dilution of 1:500 incubated at room temperature for 1.5 hours.



Immunohistochemical analysis of paraffin-embedded human breast cancer using 14977-1-AP (SNRPF antibody) at dilution of 1:100 (under 40x lens).



Immunofluorescent analysis of (4% PFA) fixed HeLa cells using 14977-1-AP (SNRPF antibody) at dilution of 1:50 and Alexa Fluor 488-conjugated AffiniPure Goat Anti-Rabbit IgG(H+L).