

For Research Use Only

# Galectin-3 Polyclonal antibody, PBS Only

Catalog Number: 14979-1-PBS

Featured Product



## Basic Information

Catalog Number:

14979-1-PBS

Size:

100ug , Concentration: 1 mg/ml by Nanodrop;

Source:

Rabbit

Isotype:

IgG

Immunogen Catalog Number:

AG6891

GenBank Accession Number:

BC001120

GeneID (NCBI):

3958

UNIPROT ID:

P17931

Full Name:

lectin, galactoside-binding, soluble, 3

Calculated MW:

26 kDa

Observed MW:

31 kDa

Purification Method:

Antigen affinity purification

## Applications

Tested Applications:

WB, IHC, IF/ICC, FC (Intra), IP, Indirect ELISA

Species Specificity:

human, mouse, rat

## Background Information

Galectins are a family of animal lectins defined by shared characteristic amino-acid sequences and affinity for  $\beta$ -galactose-containing oligosaccharides (PMID: 8063692). Galectin-3, a member of the  $\beta$ -galactoside-binding proteins, contains one carbohydrate recognition domain (CRD) and a proline- and glycine-rich N-terminal domain through which is able to form oligomers (PMID: 14758078). Galectin-3 is widely expressed in many normal tissues and a variety of tumors. It is found intracellularly in nucleus and cytoplasm or secreted outside of cell, being present on the cell surface or in the extracellular space (PMID: 16478649). Galectin-3 is involved in various biological processes including cell growth, adhesion, differentiation, apoptosis, angiogenesis, immune response, neoplastic transformation and metastasis (PMID: 16478649; 14758078).

## Storage

Storage:

Store at -80°C.

Storage Buffer:

PBS only, pH7.3

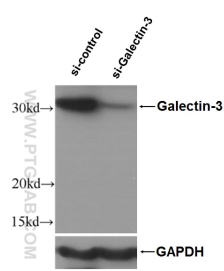
For technical support and original validation data for this product please contact:

T: 1 (888) 4PTGLAB (1-888-478-4522) (toll free in USA), or 1(312) 455-8498 (outside USA)

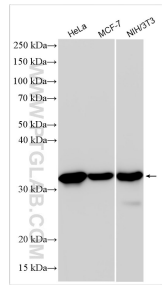
E: [proteintech@ptglab.com](mailto:proteintech@ptglab.com)  
W: [ptglab.com](http://ptglab.com)

This product is exclusively available under Proteintech Group brand and is not available to purchase from any other manufacturer.

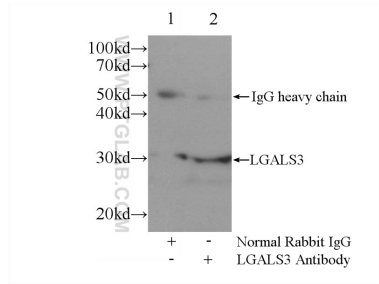
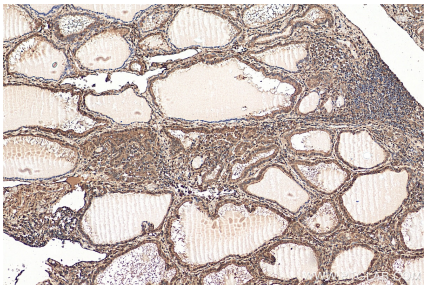
Selected Validation Data



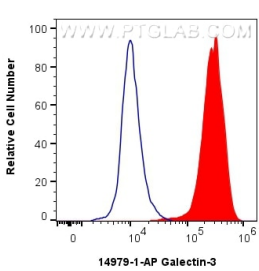
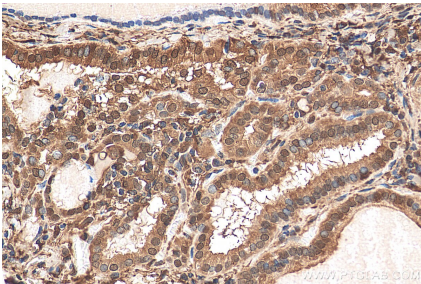
WB result of Galectin 3 antibody (14979-1-AP, 1:1000) with si-Control and si-Galectin 3 transfected HeLa cells. This data was developed using the same antibody clone with 14979-1-PBS in a different storage buffer formulation.



Various lysates were subjected to SDS PAGE followed by western blot with 14979-1-AP (Galectin-3 antibody) at dilution of 1:40000 incubated at room temperature for 1.5 hours. This data was developed using the same antibody clone with 14979-1-PBS in a different storage buffer formulation.

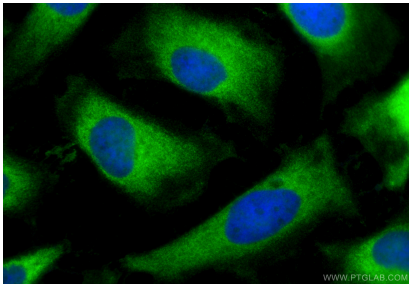


IP result of anti-Galectin-3 (IP:14979-1-AP, 3ug; Detection:14979-1-AP 1:500) with MCF-7 cells lysate 1600ug. This data was developed using the same antibody clone with 14979-1-PBS in a different storage buffer formulation.



Immunohistochemical analysis of paraffin-embedded human thyroid cancer tissue slide using 14979-1-AP (Galectin-3 antibody) at dilution of 1:200 (under 40x lens). Heat mediated antigen retrieval with Tris-EDTA buffer (pH 9.0). This data was developed using the same antibody clone with 14979-1-PBS in a different storage buffer formulation.

1x10<sup>6</sup> HeLa cells were intracellularly stained with 0.4 ug Galectin-3 Polyclonal antibody (14979-1-AP) and CoraLite®488-Conjugated AffiniPure Goat Anti-Rabbit IgG(H+L) (SA00013-2) (red), or 0.4 ug Rabbit IgG control Rabbit PolyAb (30000-0-AP) (blue). Cells were fixed with 4% PFA and permeabilized with Flow Cytometry Perm Buffer (PF00011-C). This data was developed using the same antibody clone with 14979-1-PBS in a different storage buffer formulation.



Immunofluorescent analysis of (-20°C Methanol) fixed HeLa cells using Galectin-3 antibody (14979-1-AP) at dilution of 1:200 and CoraLite®488-Conjugated Goat Anti-Rabbit IgG(H+L) (SA00013-2). This data was developed using the same antibody clone with 14979-1-PBS in a different storage buffer formulation.