

For Research Use Only

RPL27 Polyclonal antibody

Catalog Number: 14980-1-AP

7 Publications



Basic Information

Catalog Number:

14980-1-AP

Size:

150ul, Concentration: 450 ug/ml by Nanodrop;

Source:

Rabbit

Isotype:

IgG

Immunogen Catalog Number:

AG6893

GenBank Accession Number:

BC001700

GeneID (NCBI):

6155

UNIPROT ID:

P61353

Full Name:

ribosomal protein L27

Calculated MW:

16 kDa

Observed MW:

18 kDa

Purification Method:

Antigen affinity purification

Recommended Dilutions:

WB 1:500-1:1000

IHC 1:20-1:200

Applications

Tested Applications:

WB, IHC, ELISA

Cited Applications:

WB, IF, IHC

Species Specificity:

human, mouse, rat

Cited Species:

human, rat, mouse

Note-IHC: suggested antigen retrieval with TE buffer pH 9.0; (*) Alternatively, antigen retrieval may be performed with citrate buffer pH 6.0

Positive Controls:

WB : mouse liver tissue, human liver tissue

IHC : human liver cancer tissue,

Background Information

RPL27, also named as 60S ribosomal protein L27, is a 136 amino acid protein, which contains one KOW domain and belongs to the ribosomal protein L27e family. The function of RPL27 is still non-known. RPL27 may play a role in protein translation. Like most ribosomal proteins, Ribosomal Protein L27 exists as multiple processed pseudogenes that are scattered throughout the genome.

Notable Publications

Author	Pubmed ID	Journal	Application
Muhammad U Cheema	24303148	Physiol Rep	WB
Zhenyuan Wei	35615641	J Orthop Translat	WB, IHC
James P Hewitson	30833344	EMBO Rep	WB

Storage

Storage:

Store at -20°C. Stable for one year after shipment.

Storage Buffer:

PBS with 0.02% sodium azide and 50% glycerol pH 7.3.

Aliquoting is unnecessary for -20°C storage

*** 20ul sizes contain 0.1% BSA

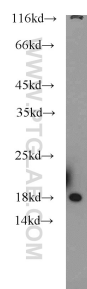
For technical support and original validation data for this product please contact:

T: 1 (888) 4PTGLAB (1-888-478-4522) (toll free in USA), or 1(312) 455-8498 (outside USA)

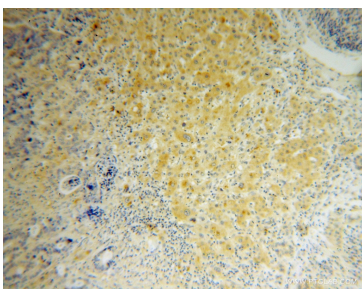
E: proteintech@ptglab.com
W: ptglab.com

This product is exclusively available under Proteintech Group brand and is not available to purchase from any other manufacturer.

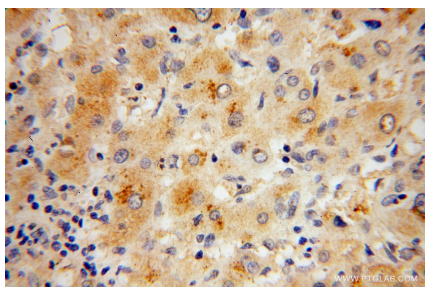
Selected Validation Data



mouse liver tissue were subjected to SDS PAGE followed by western blot with 14980-1-AP (RPL27 antibody) at dilution of 1:500 incubated at room temperature for 1.5 hours.



Immunohistochemical analysis of paraffin-embedded human liver cancer using 14980-1-AP (RPL27 antibody) at dilution of 1:100 (under 10x lens).



Immunohistochemical analysis of paraffin-embedded human liver cancer using 14980-1-AP (RPL27 antibody) at dilution of 1:100 (under 40x lens).