

For Research Use Only

PPA1 Polyclonal antibody

Catalog Number: 14985-1-AP

2 Publications



Basic Information

Catalog Number:

14985-1-AP

Size:

150ul, Concentration: 300 ug/ml by Nanodrop and 133 ug/ml by Bradford method using BSA as the standard;

Source:

Rabbit

Isotype:

IgG

Immunogen Catalog Number:

AG6969

GenBank Accession Number:

BC001022

GeneID (NCBI):

5464

UNIPROT ID:

Q15181

Full Name:

pyrophosphatase (inorganic) 1

Calculated MW:

33 kDa

Observed MW:

33 kDa

Purification Method:

Antigen affinity purification

Recommended Dilutions:

WB 1:500-1:2000

IP 0.5-4.0 ug for 1.0-3.0 mg of total protein lysate

IHC 1:50-1:500

IF/ICC 1:50-1:500

Applications

Tested Applications:

WB, IHC, IF/ICC, IP, ELISA

Cited Applications:

WB

Species Specificity:

human, mouse, rat

Cited Species:

human

Note-IHC: suggested antigen retrieval with TE buffer pH 9.0; (*) Alternatively, antigen retrieval may be performed with citrate buffer pH 6.0

Positive Controls:

WB : human heart tissue, human liver tissue

IP : mouse liver tissue,

IHC : human breast cancer tissue, human heart tissue

IF/ICC : HeLa cells,

Background Information

PPA1(Inorganic pyrophosphatase) is also named as IOPPP, PP and PPase. It maintains the thermodynamic favorability of these reactions by catalyzing the hydrolysis of pyrophosphates into organic phosphates, which are then exported across the cell membrane(PMID:16300924).The erythrocyte inorganic pyrophosphatase molecule would appear to be a dimer(PMID:4130389).

Notable Publications

Author	Pubmed ID	Journal	Application
Hexiao Shen	30718521	Sci Rep	WB
Melanie T Achleitner	37999237	Metabolites	WB

Storage

Storage:

Store at -20°C. Stable for one year after shipment.

Storage Buffer:

PBS with 0.02% sodium azide and 50% glycerol pH 7.3.

Aliquoting is unnecessary for -20°C storage

*** 20ul sizes contain 0.1% BSA

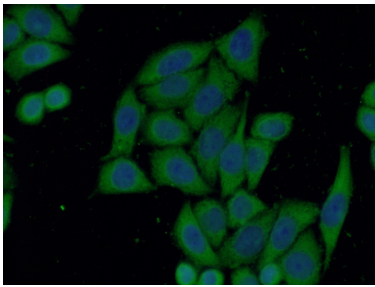
For technical support and original validation data for this product please contact:

T: 1 (888) 4PTGLAB (1-888-478-4522) (toll free in USA), or 1(312) 455-8498 (outside USA)

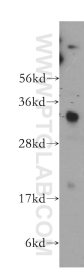
E: proteintech@ptglab.com
W: ptglab.com

This product is exclusively available under Proteintech Group brand and is not available to purchase from any other manufacturer.

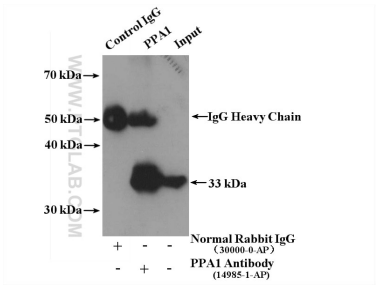
Selected Validation Data



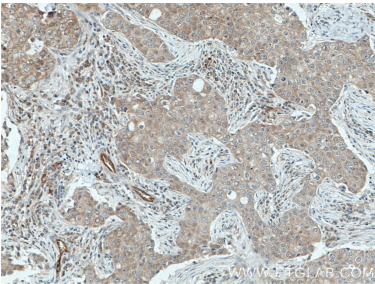
Immunofluorescent analysis of (-20°C Ethanol) fixed HeLa cells using 14985-1-AP (PPA1 antibody) at dilution of 1:50 and Alexa Fluor 488-conjugated Goat Anti-Rabbit IgG(H+L).



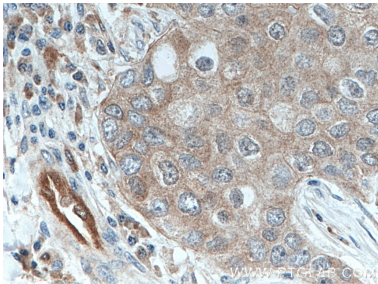
human heart tissue were subjected to SDS PAGE followed by western blot with 14985-1-AP (PPA1 antibody) at dilution of 1:500 incubated at room temperature for 1.5 hours.



IP result of anti-PPA1 (IP:14985-1-AP, 4ug; Detection:14985-1-AP 1:1000) with mouse liver tissue lysate 6000 ug.



Immunohistochemical analysis of paraffin-embedded human breast cancer tissue slide using 14985-1-AP (PPA1 antibody) at dilution of 1:200 (under 10x lens. Heat mediated antigen retrieval with Tris-EDTA buffer (pH 9.0).



Immunohistochemical analysis of paraffin-embedded human breast cancer tissue slide using 14985-1-AP (PPA1 antibody) at dilution of 1:200 (under 40x lens. Heat mediated antigen retrieval with Tris-EDTA buffer (pH 9.0).