

For Research Use Only

MGLL Polyclonal antibody

Catalog Number: 14986-1-AP

Featured Product

5 Publications



Basic Information

Catalog Number: 14986-1-AP	GenBank Accession Number: BC000551	Purification Method: Antigen affinity purification
Size: 150ul , Concentration: 450 µg/ml by Nanodrop;	GeneID (NCBI): 11343	Recommended Dilutions: WB 1:300-1:600 IP 0.5-4.0 ug for IP and 1:200-1:1000 for WB
Source: Rabbit	Full Name: monoglyceride lipase	IHC 1:50-1:500
Isotype: IgG	Calculated MW: 33 kDa	
Immunogen Catalog Number: AG6970	Observed MW: 33 kDa	

Applications

Tested Applications: IHC, IP, WB, ELISA	Positive Controls: WB : HepG2 cells, L02 cells, SMMC-7721 cells
Cited Applications: IHC, WB	IP : mouse liver tissue,
Species Specificity: human, mouse, rat	IHC : human liver cancer tissue,
Cited Species: human, rat, mouse	

Note-IHC: suggested antigen retrieval with TE buffer pH 9.0; (*) Alternatively, antigen retrieval may be performed with citrate buffer pH 6.0

Background Information

MGLL (monoglyceride lipase) is also named as MAGL, HU-K5 and belongs to the monoacylglycerol lipase family. It converts monoacylglycerides to free fatty acids and glycerol and functions together with hormone-sensitive lipase (HSL) in the mobilization of fatty acids from the triglyceride stores of adipocytes. MGL protein is ubiquitously expressed in kidney, spleen, heart, liver, stomach, brain, lung, adrenal gland, adipose tissue and in brain, there are two bands of 33 kDa and 35 kDa can be detected. The single protein species expressed in muscle is larger (around 40 kDa) (PMID:11470505). This protein can exist as a homodimer (PMID:19957260).

Notable Publications

Author	Pubmed ID	Journal	Application
Jinming Zhang	32198011	Neuroscience	WB
Shuting Xia	27296803	Elife	WB
Xintian Chen	36694250	J Exp Clin Cancer Res	WB,IHC

Storage

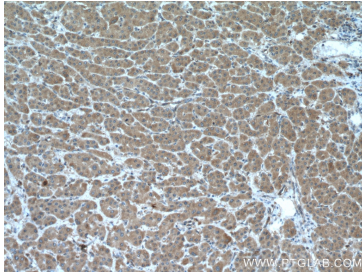
Storage:
Store at -20°C. Stable for one year after shipment.
Storage Buffer:
PBS with 0.02% sodium azide and 50% glycerol pH 7.3.
Aliquoting is unnecessary for -20°C storage

*** 20ul sizes contain 0.1% BSA

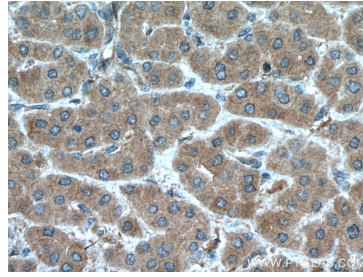
For technical support and original validation data for this product please contact:
T: 1 (888) 4PTGLAB (1-888-478-4522) (toll free in USA), or 1(312) 455-8498 (outside USA)
E: proteintech@ptglab.com
W: ptglab.com

This product is exclusively available under Proteintech Group brand and is not available to purchase from any other manufacturer.

Selected Validation Data



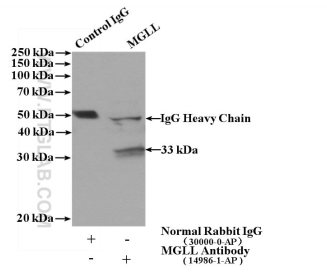
Immunohistochemical analysis of paraffin-embedded human liver cancer tissue slide using 14986-1-AP (MGLL antibody) at dilution of 1:200 (under 10x lens. Heat mediated antigen retrieval with Tris-EDTA buffer (pH 9.0).



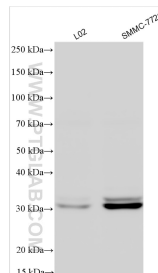
Immunohistochemical analysis of paraffin-embedded human liver cancer tissue slide using 14986-1-AP (MGLL antibody) at dilution of 1:200 (under 40x lens. Heat mediated antigen retrieval with Tris-EDTA buffer (pH 9.0).



HepG2 cells were subjected to SDS PAGE followed by western blot with 14986-1-AP (MGLL antibody) at dilution of 1:600 incubated at room temperature for 1.5 hours.



IP Result of anti-MGLL (IP:14986-1-AP, 4ug; Detection:14986-1-AP 1:300) with mouse liver tissue lysate 4000ug.



Various lysates were subjected to SDS PAGE followed by western blot with 14986-1-AP (MGLL antibody) at dilution of 1:800 incubated at room temperature for 1.5 hours.