

For Research Use Only

MGLL Polyclonal antibody, PBS Only

Catalog Number: 14986-1-PBS

Featured Product



Basic Information

Catalog Number:

14986-1-PBS

Size:

100ug, Concentration: 1mg/ml by Nanodrop;

Source:

Rabbit

Isotype:

IgG

Immunogen Catalog Number:

AG6970

GenBank Accession Number:

BC000551

GeneID (NCBI):

11343

UNIPROT ID:

Q99685

Full Name:

monoglyceride lipase

Calculated MW:

33 kDa

Observed MW:

33 kDa

Purification Method:

Antigen affinity purification

Applications

Tested Applications:

WB, IHC, IP, ELISA

Species Specificity:

human, mouse, rat

Background Information

MGLL (monoglyceride lipase) is also named as MAGL, HU-K5 and belongs to the monoacylglycerol lipase family. It converts monoacylglycerides to free fatty acids and glycerol and functions together with hormone-sensitive lipase (HSL) in the mobilization of fatty acids from the triglyceride stores of adipocytes. MGL protein is ubiquitously expressed in kidney, spleen, heart, liver, stomach, brain, lung, adrenal gland, adipose tissue and in brain, there are two bands of 33 kDa and 35 kDa can be detected. The single protein species expressed in muscle is larger (around 40 kDa) (PMID:11470505). This protein can exist as a homodimer (PMID:19957260).

Storage

Storage:

Store at -80°C.

Storage Buffer:

PBS only, pH7.3

For technical support and original validation data for this product please contact:

T: 1 (888) 4PTGLAB (1-888-478-4522) (toll free in USA), or 1(312) 455-8498 (outside USA)

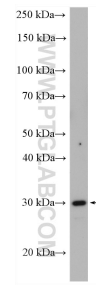
E: proteintech@ptglab.com
W: ptglab.com

This product is exclusively available under Proteintech Group brand and is not available to purchase from any other manufacturer.

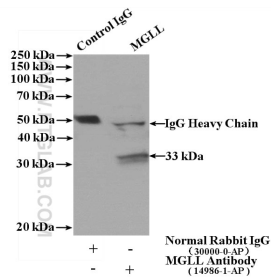
Selected Validation Data

Immunohistochemical analysis of paraffin-embedded human liver cancer tissue slide using 14986-1-AP (MGLL antibody) at dilution of 1:200 (under 10x lens. Heat mediated antigen retrieval with Tris-EDTA buffer (pH 9.0).

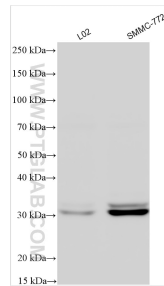
Immunohistochemical analysis of paraffin-embedded human liver cancer tissue slide using 14986-1-AP (MGLL antibody) at dilution of 1:200 (under 40x lens. Heat mediated antigen retrieval with Tris-EDTA buffer (pH 9.0).



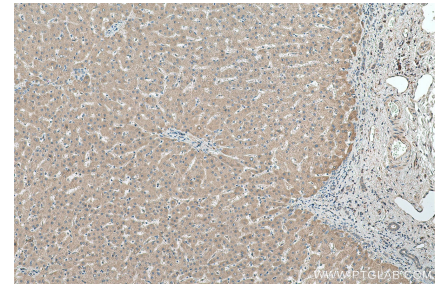
HepG2 cells were subjected to SDS PAGE followed by western blot with 14986-1-AP (MGLL antibody) at dilution of 1:600 incubated at room temperature for 1.5 hours. This data was developed using the same antibody clone with 14986-1-PBS in a different storage buffer formulation.



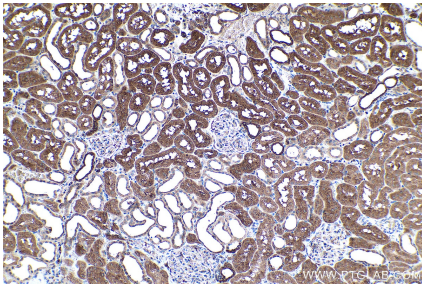
IP result of anti-MGLL (IP:14986-1-AP, 4ug; Detection:14986-1-AP 1:300) with mouse liver tissue lysate 4000ug. This data was developed using the same antibody clone with 14986-1-PBS in a different storage buffer formulation.



Various lysates were subjected to SDS PAGE followed by western blot with 14986-1-AP (MGLL antibody) at dilution of 1:800 incubated at room temperature for 1.5 hours. This data was developed using the same antibody clone with 14986-1-PBS in a different storage buffer formulation.



Immunohistochemical analysis of paraffin-embedded human liver tissue slide using 14986-1-AP (MGLL antibody) at dilution of 1:500 (under 10x lens). Heat mediated antigen retrieval with Tris-EDTA buffer (pH 9.0). This data was developed using the same antibody clone with 14986-1-PBS in a different storage buffer formulation.



Immunohistochemical analysis of paraffin-embedded human kidney tissue slide using 14986-1-AP (MGLL antibody) at dilution of 1:2000 (under 10x lens). Heat mediated antigen retrieval with Tris-EDTA buffer (pH 9.0). This data was developed using the same antibody clone with 14986-1-PBS in a different storage buffer formulation.